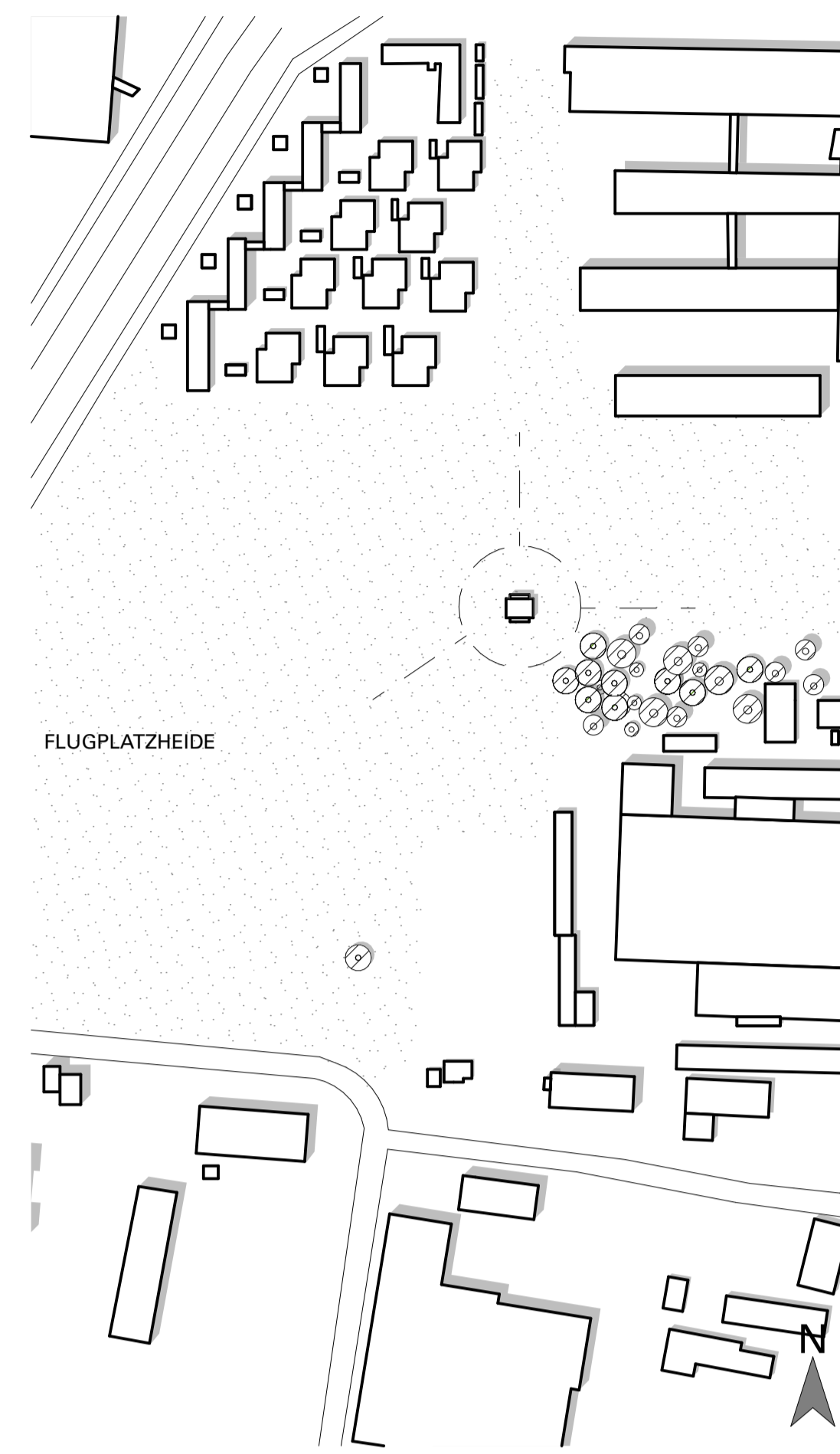
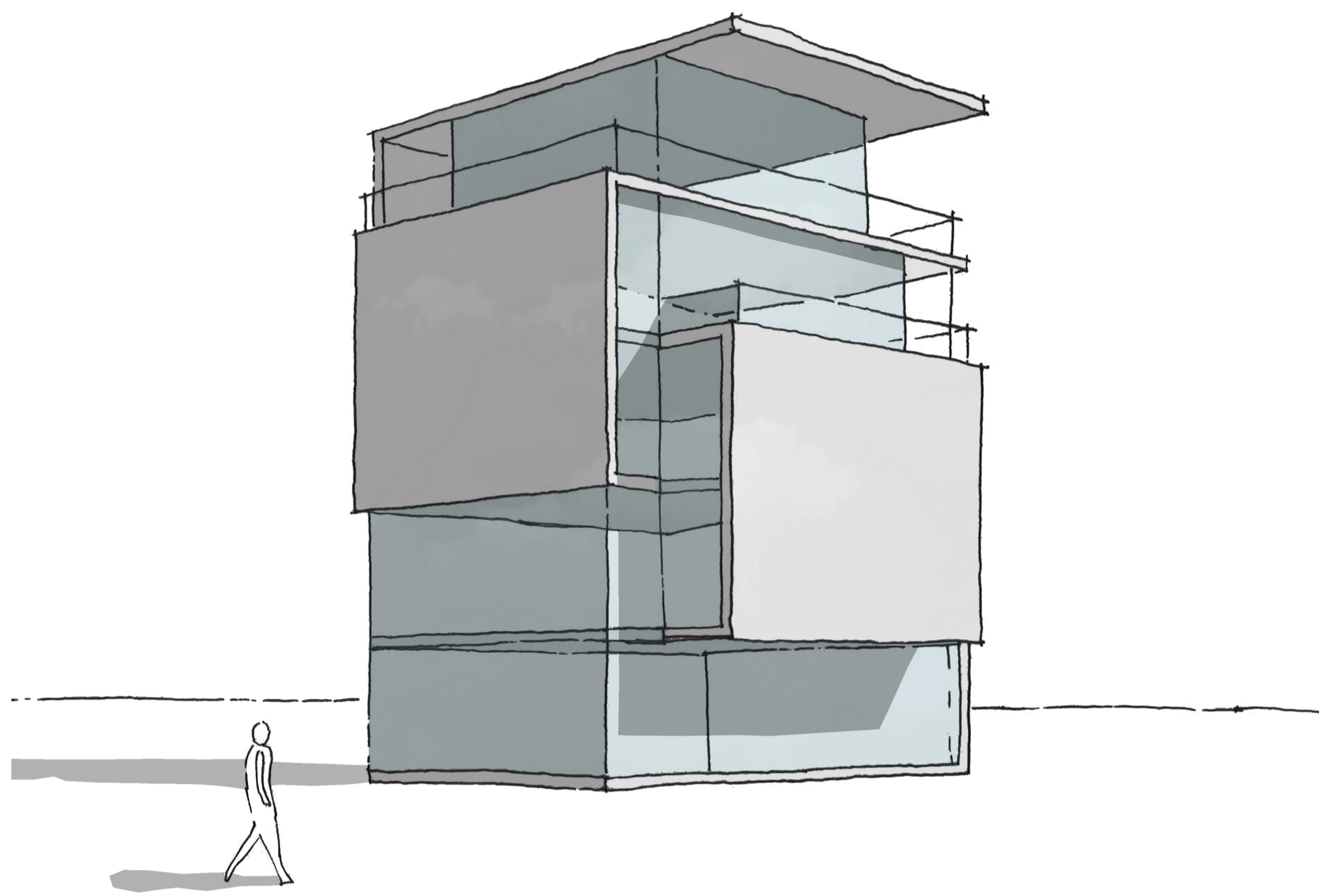
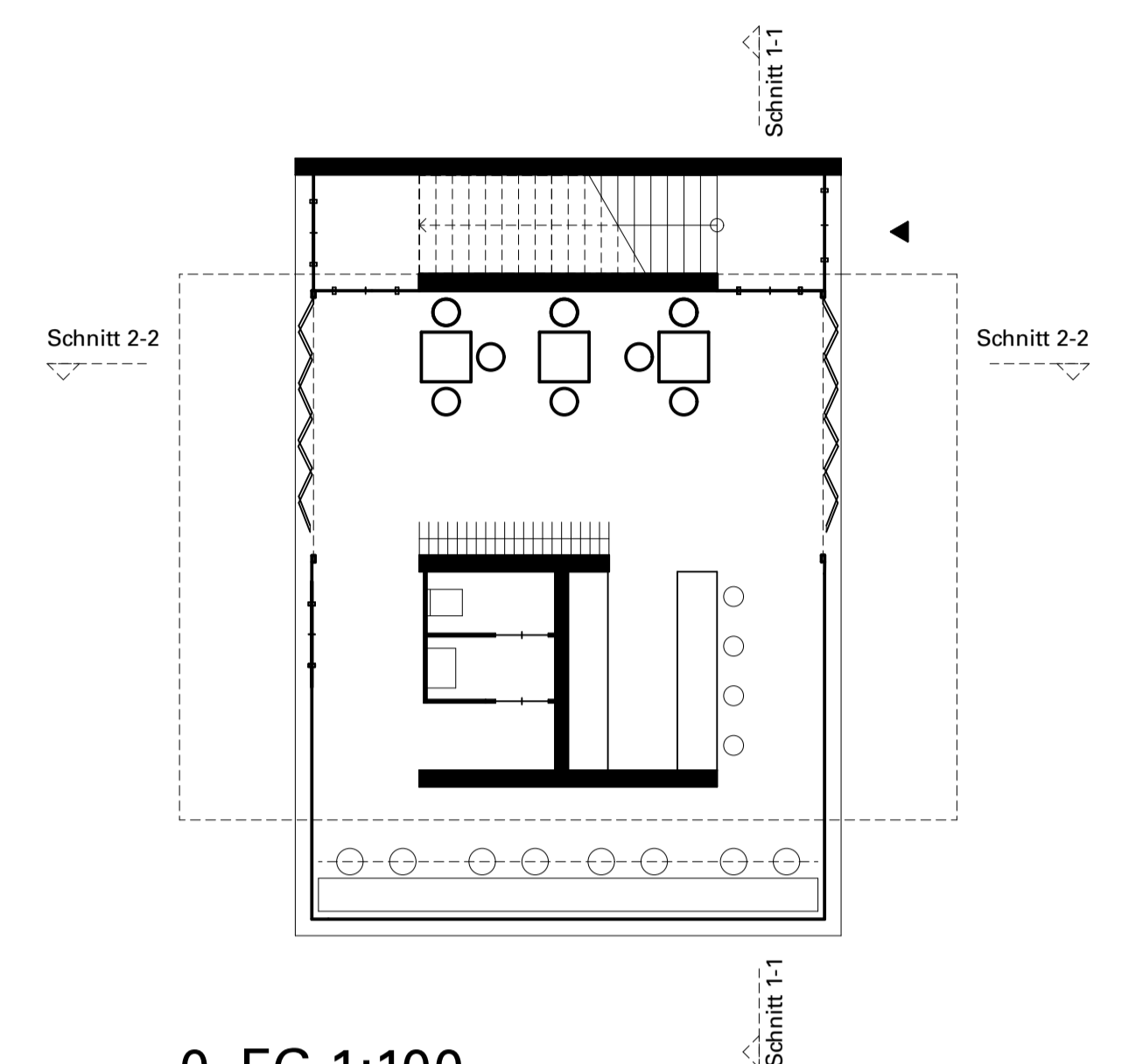


Hochgefaltet

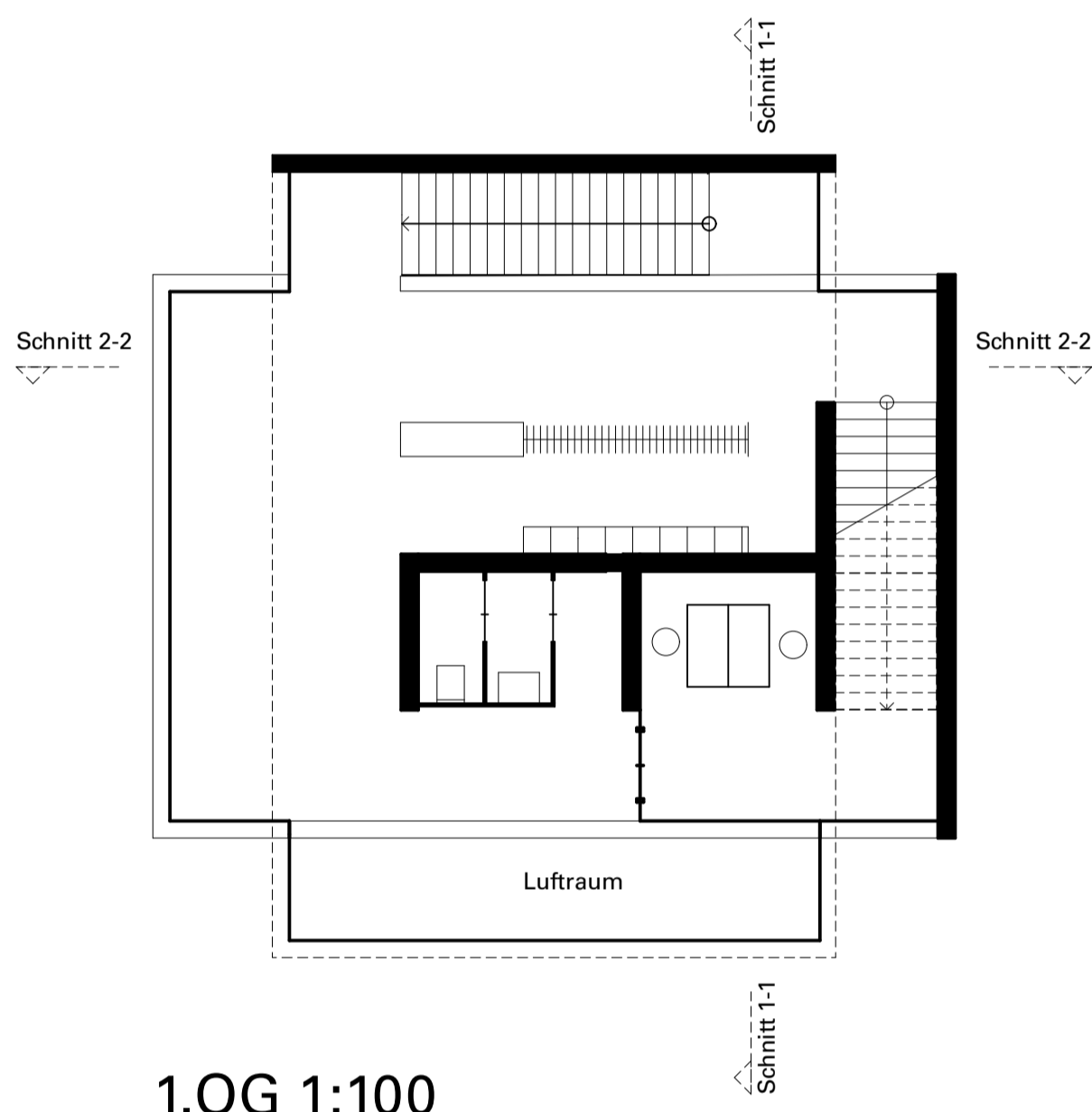
Ein Hochpunkt fürs Kastland in Haunstetten



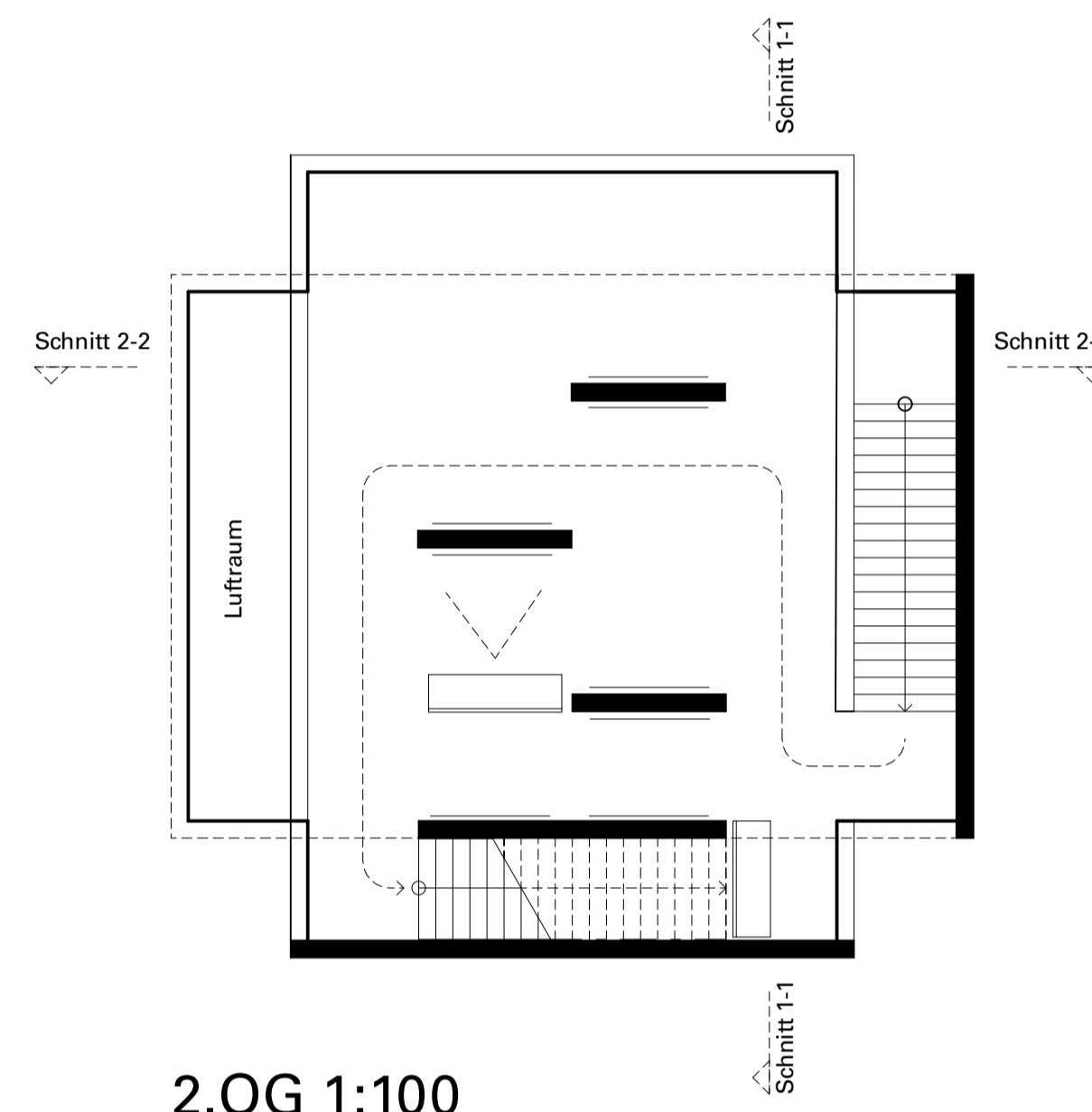
Lageplan 1:2500



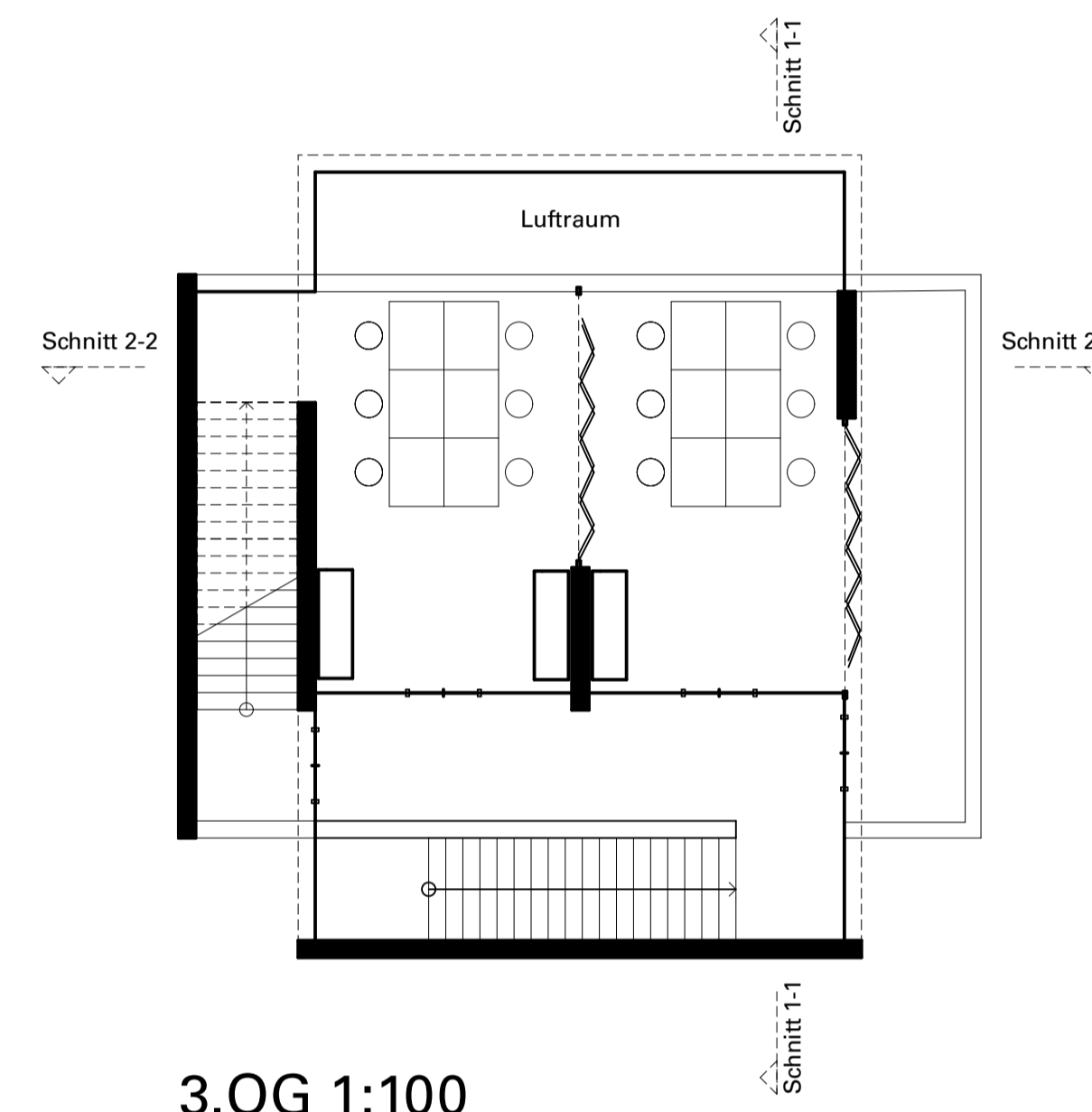
0. EG 1:100



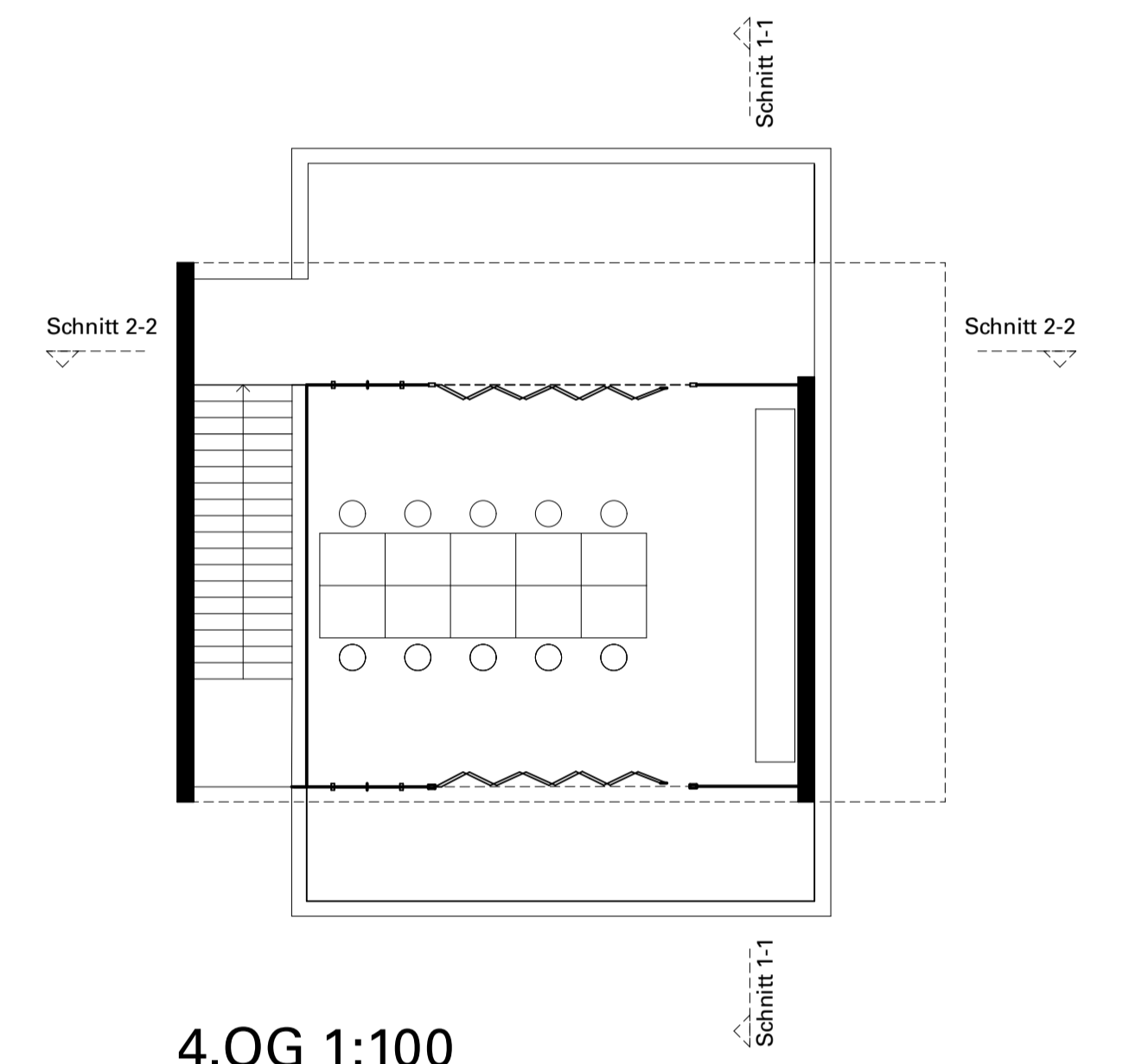
1.OG 1:100



2.OG 1:100



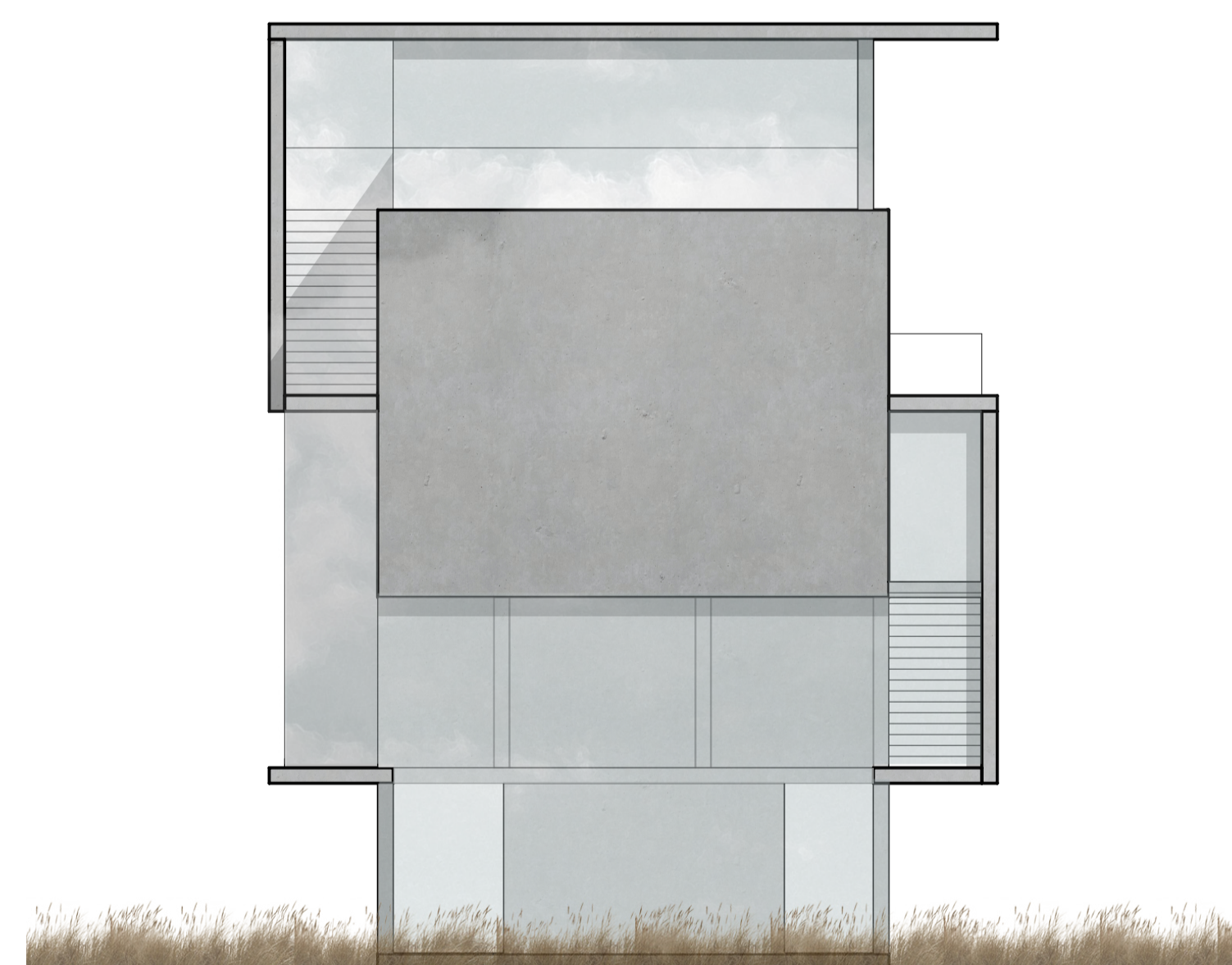
3.OG 1:100



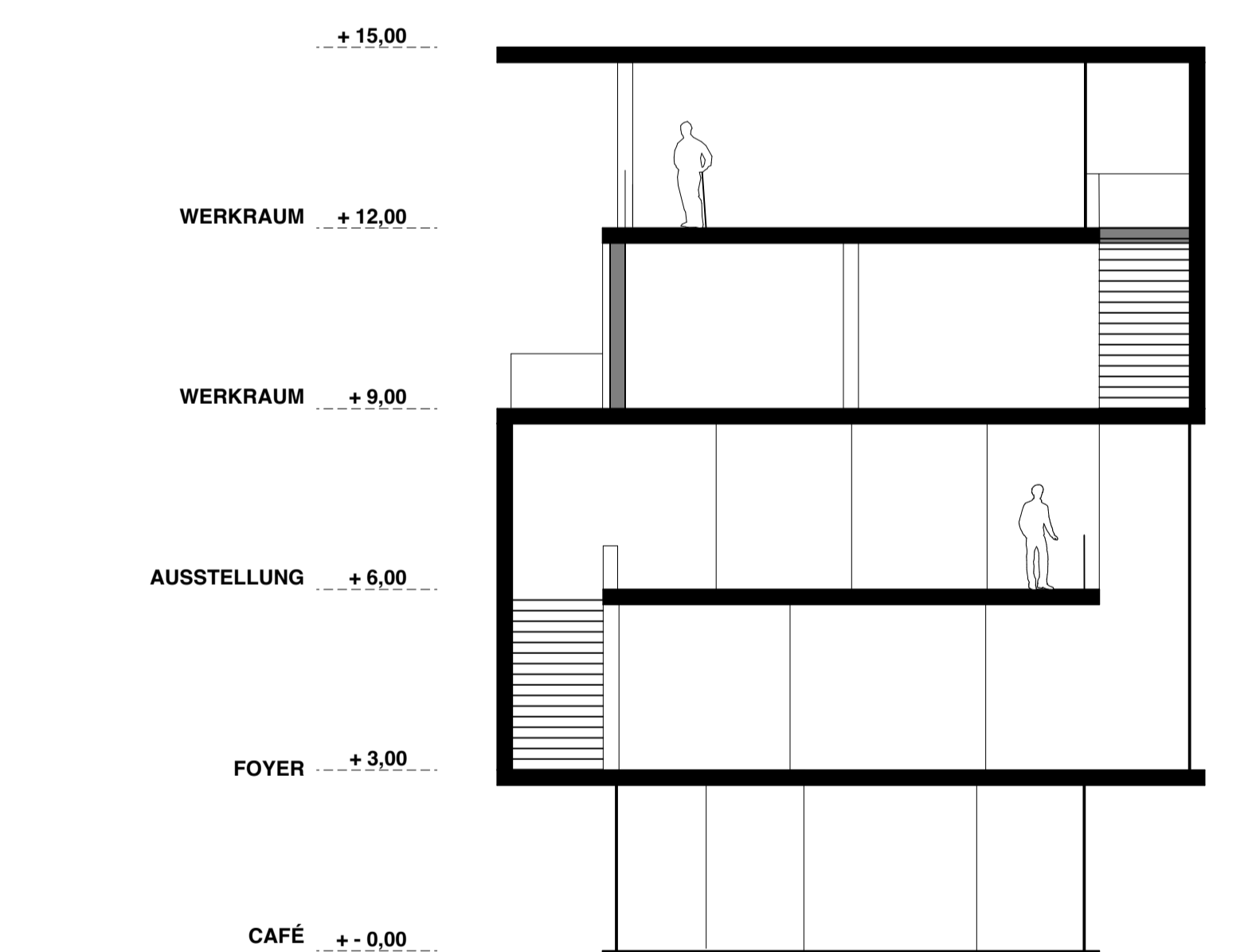
4.OG 1:100



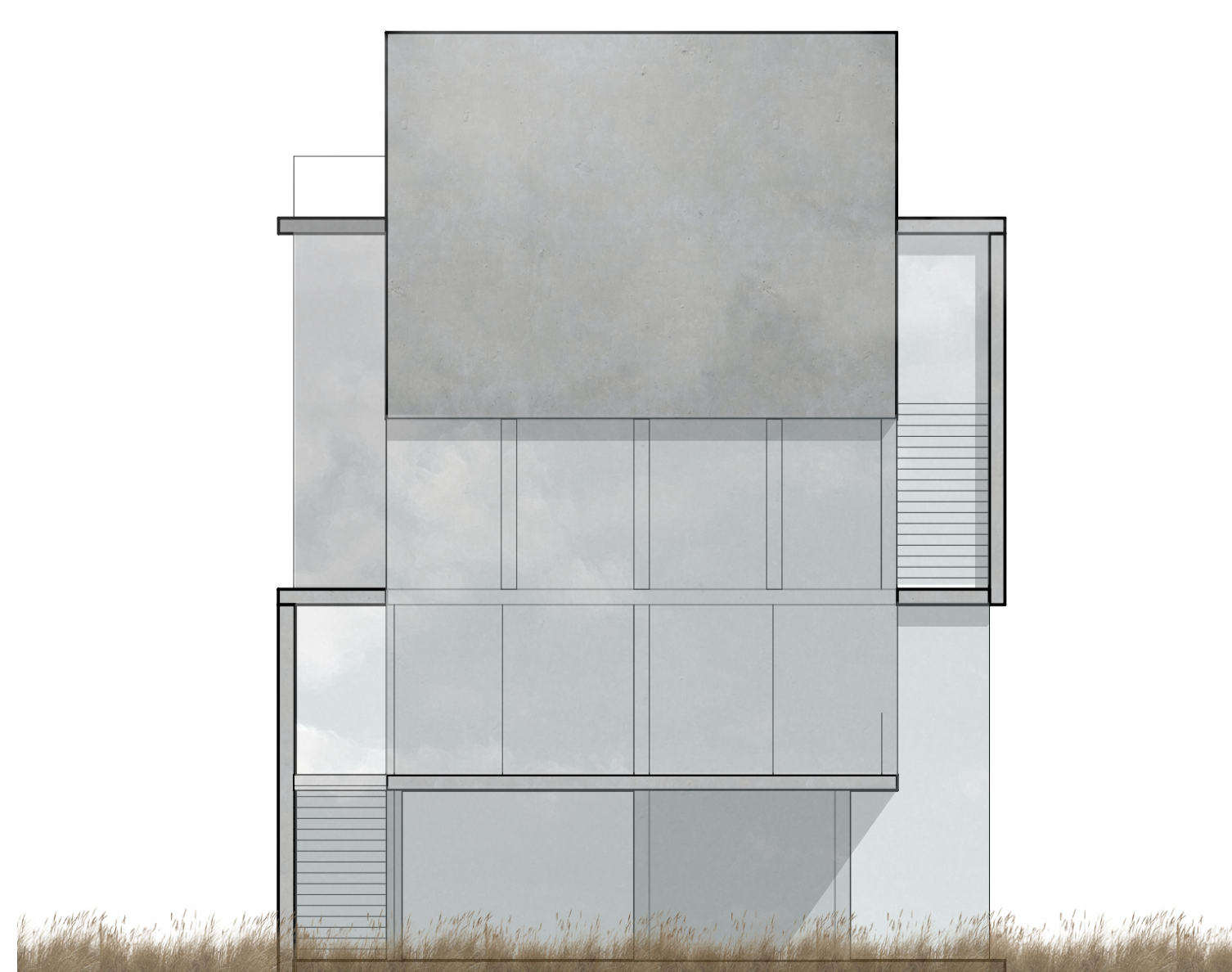
Ansicht Nord 1:100



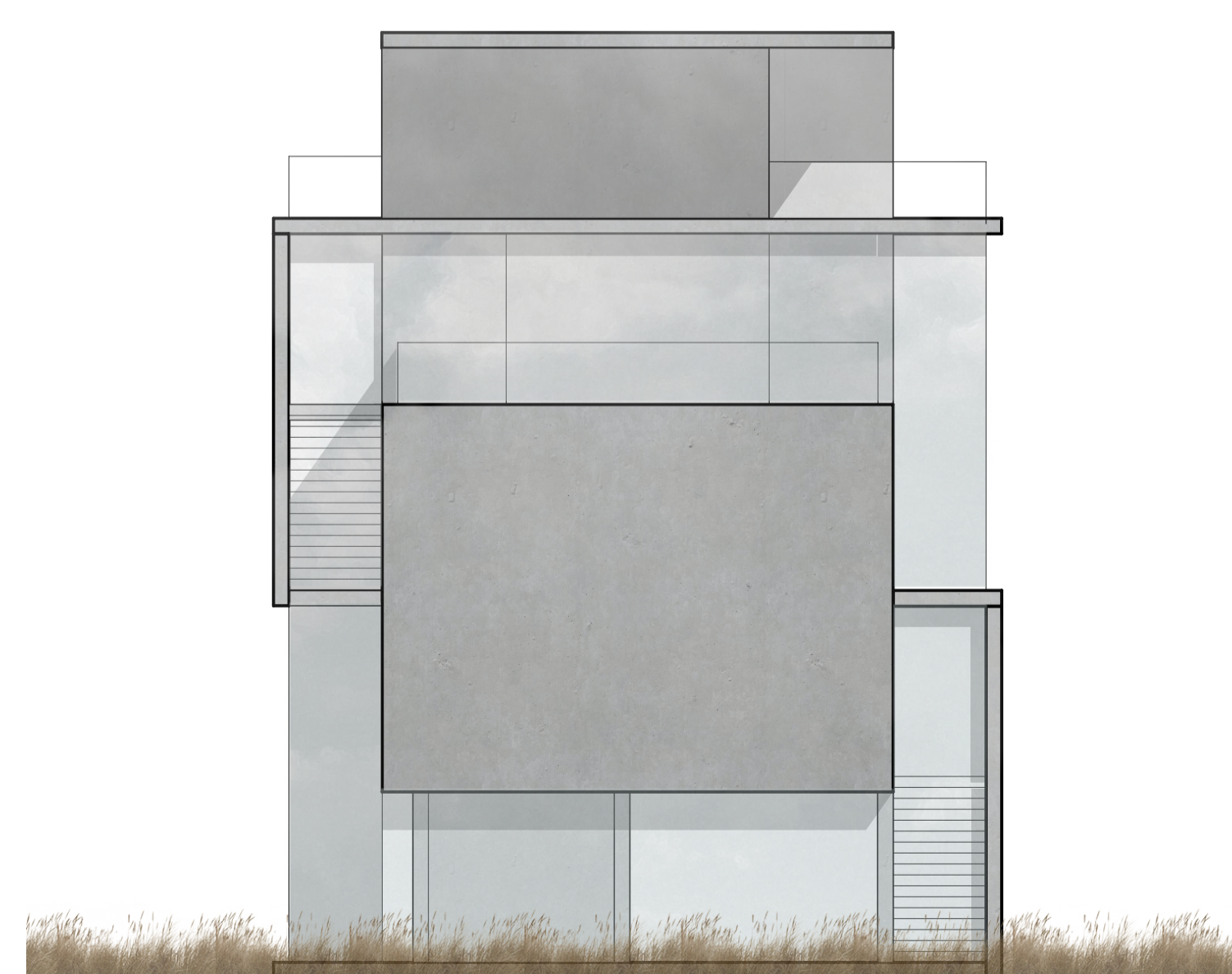
Ansicht Süd 1:100



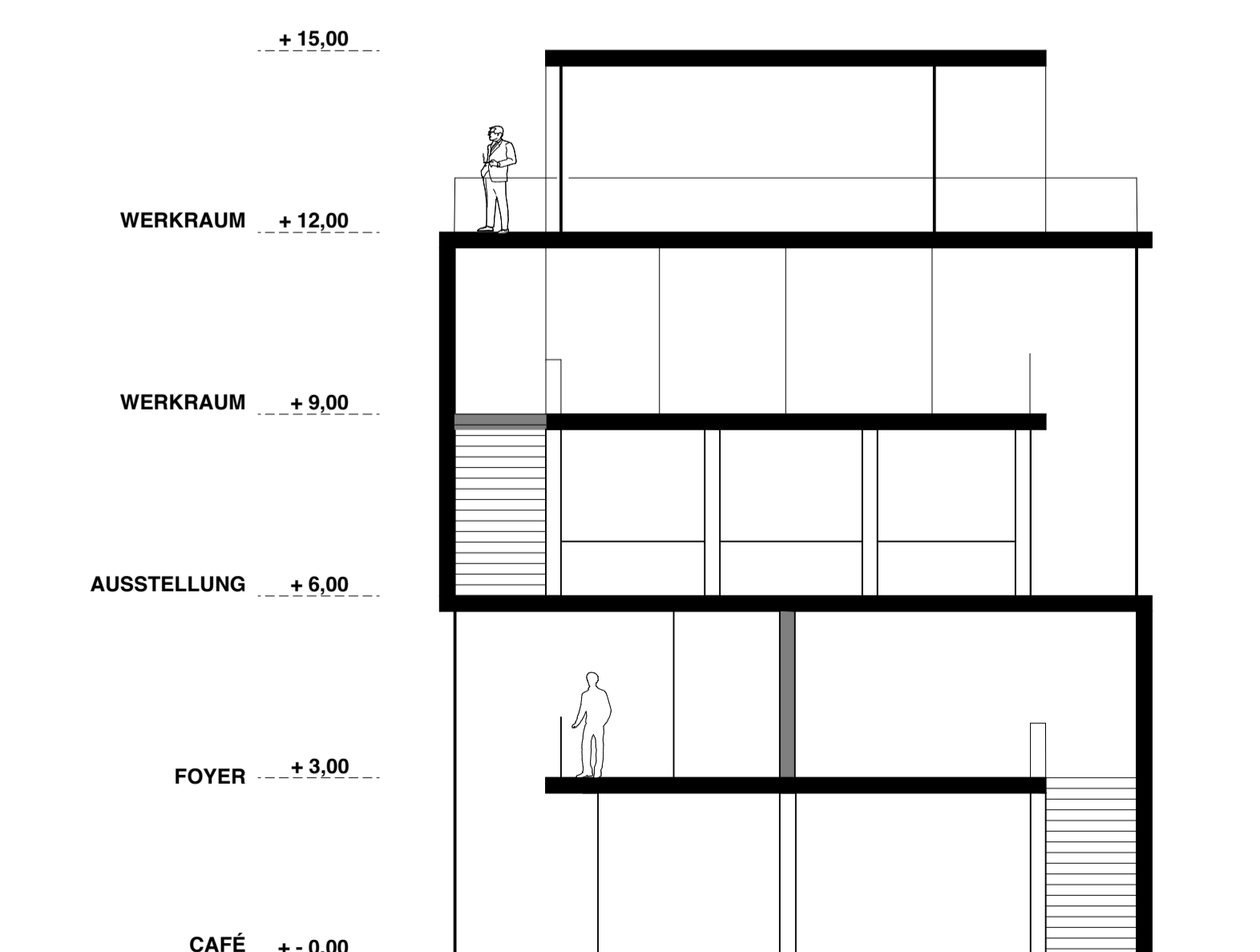
Schnitt 2-2 1:100



Ansicht West 1:100



Ansicht Ost 1:100



Schnitt 1-1 1:100

Tom Hanstein





