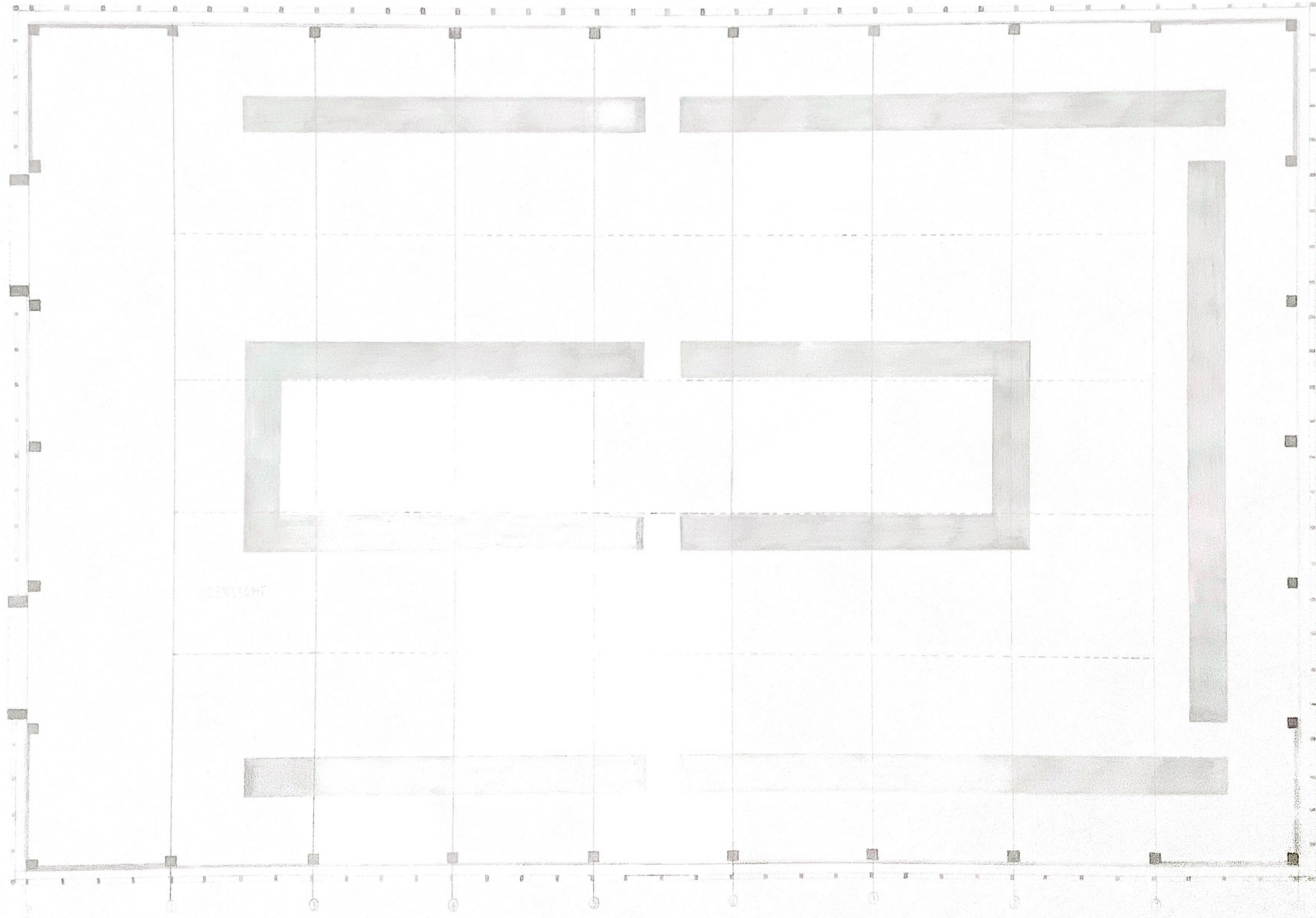
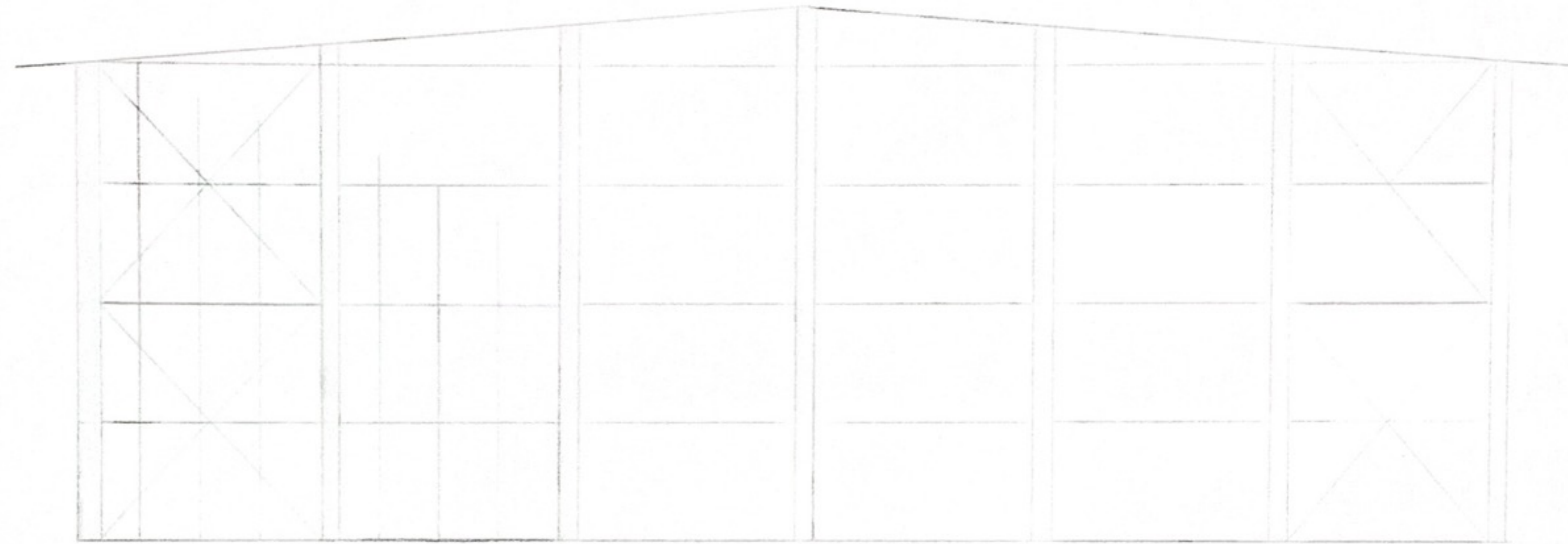


MÄSSIGE
KOORDINATION
NACH DIN EN ISO 2282
M = 100 mm
N = 100 mm
NW 2-M = 50/10 mm





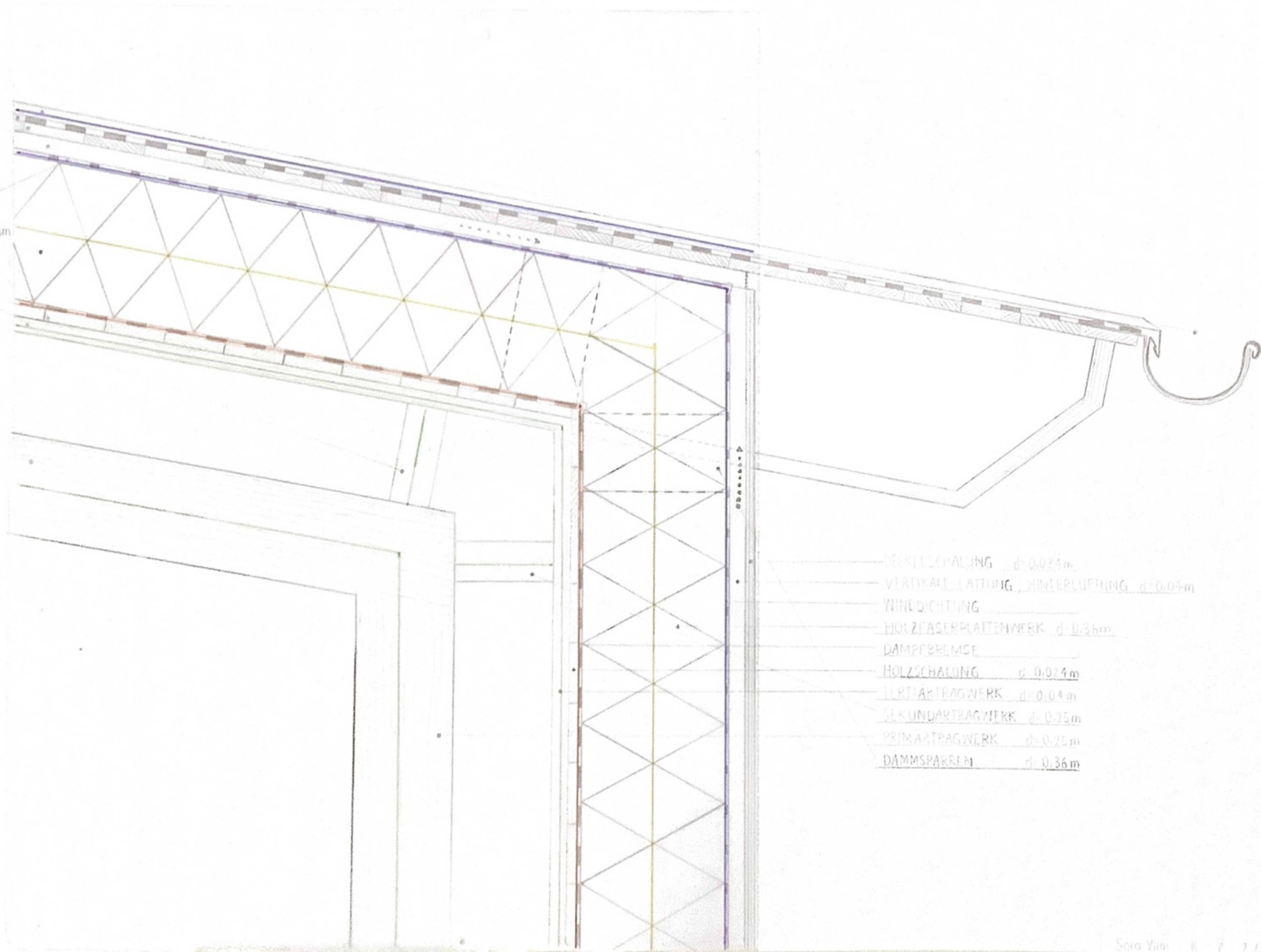
GIEBELWAND AUSSTEIFUNG



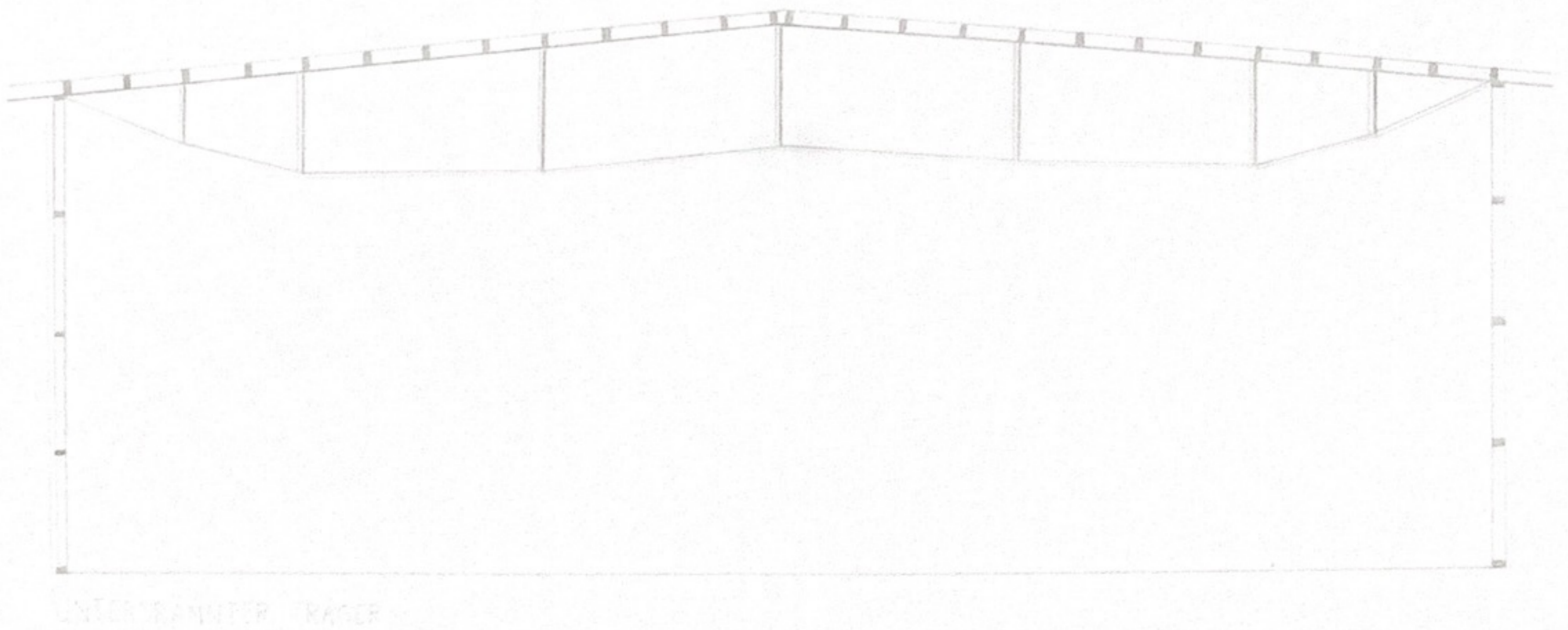
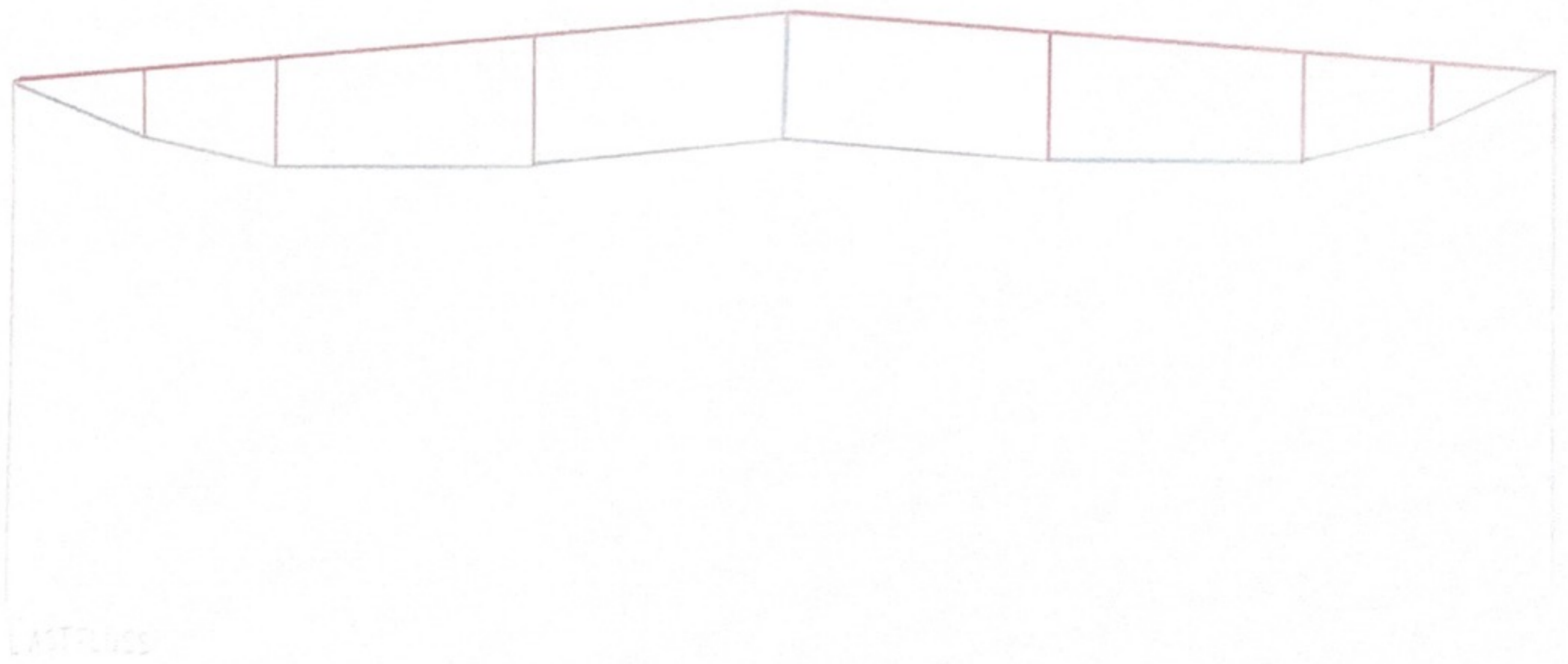
WAND AUSSTEIFUNG

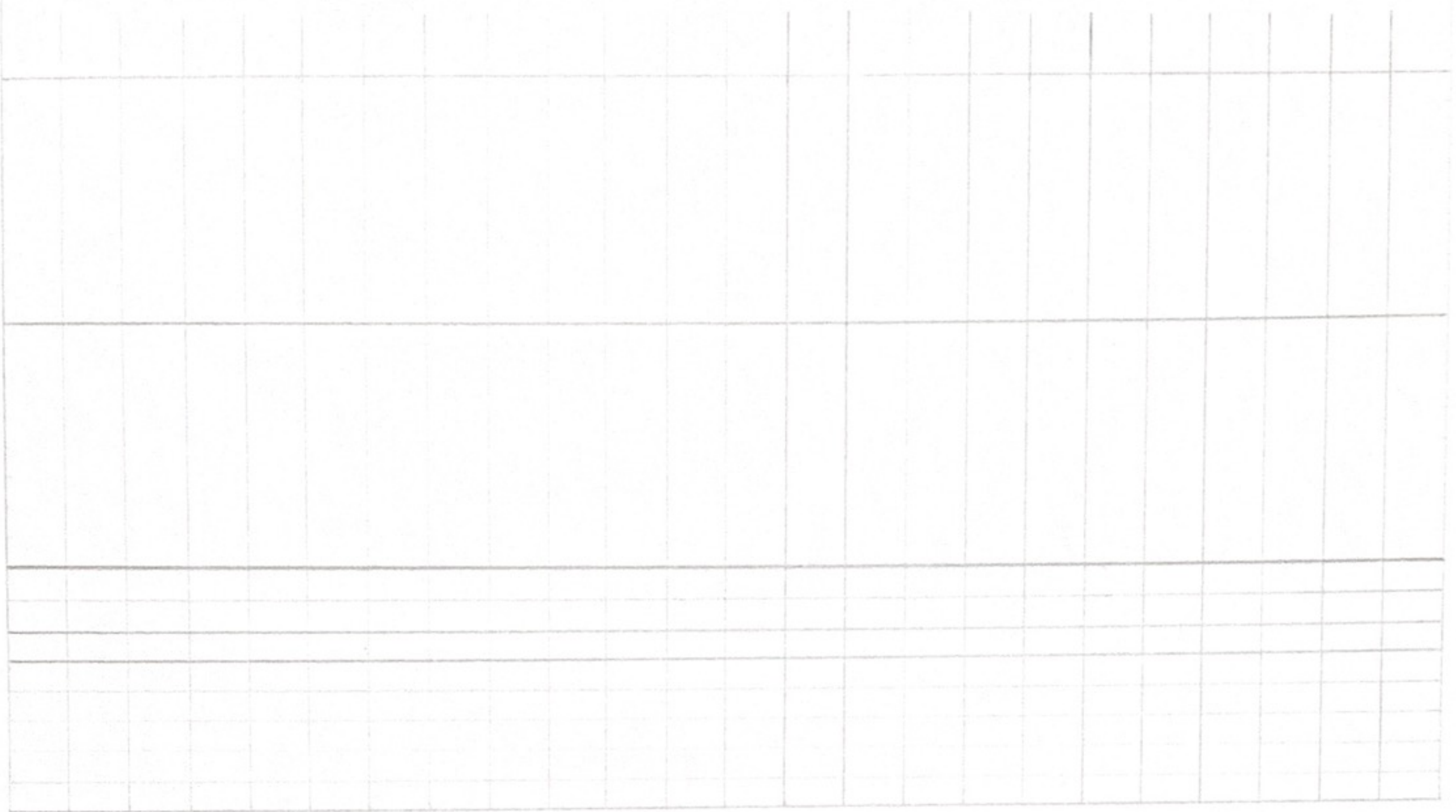
TRAUFDETAIL M 1:10

- REGENRINNE
- STEHFALZDECKUNG
- DACHHAPPE
- HOLZSCHALUNG $d=0,024\text{m}$
- VERTIKALE LATTUNG $d=0,04\text{m}$
- HINTERLÜFTUNG
- WINDDICHTUNG
- HOLZFASERPLATTENWERK $d=0,36\text{m}$
- DAMPFBREMSE
- HOLZSCHALUNG $d=0,024\text{m}$
- TERTIARTRAGWERK $d=0,04\text{m}$
- SEKUNDARTRAGWERK $d=0,25\text{m}$
- PRIMARTRAGWERK $d=0,25\text{m}$

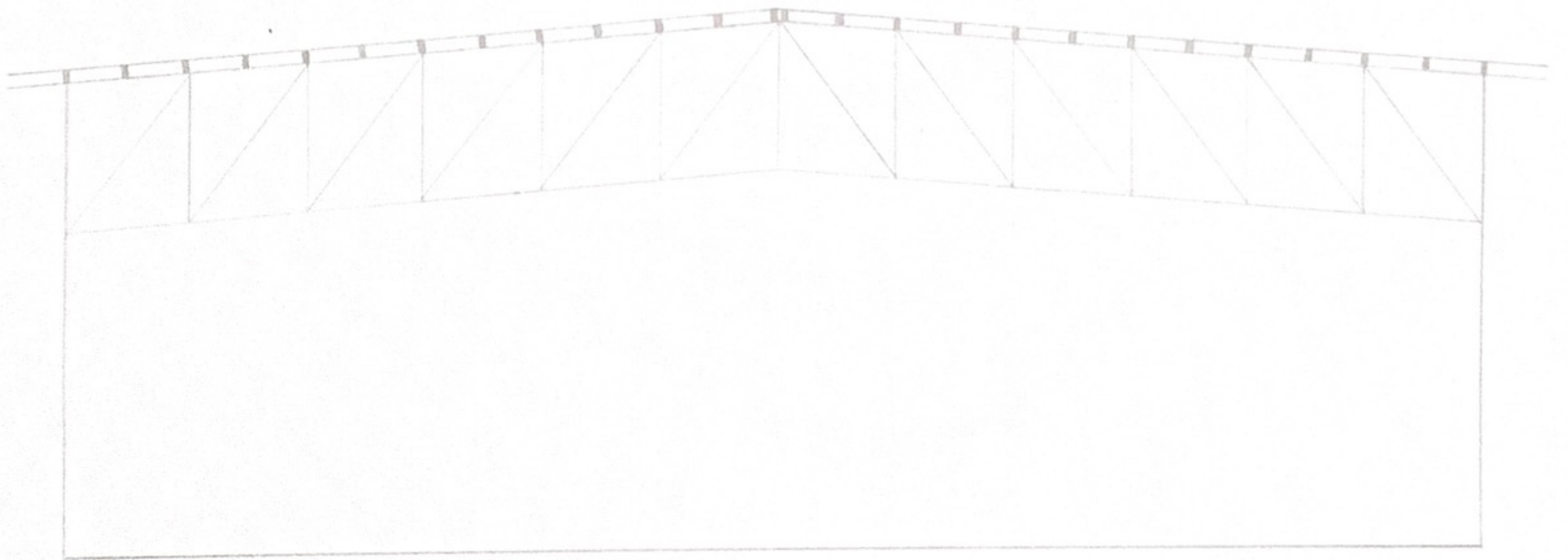


- SEKUNDSCHALUNG $d=0,024\text{m}$
- VERTIKALE LATTUNG, HINTERLÜFTUNG $d=0,04\text{m}$
- WINDDICHTUNG
- HOLZFASERPLATTENWERK $d=0,36\text{m}$
- DAMPFBREMSE
- HOLZSCHALUNG $d=0,024\text{m}$
- TERTIARTRAGWERK $d=0,04\text{m}$
- SEKUNDARTRAGWERK $d=0,25\text{m}$
- PRIMARTRAGWERK $d=0,25\text{m}$
- DAMMSPARRN $d=0,36\text{m}$

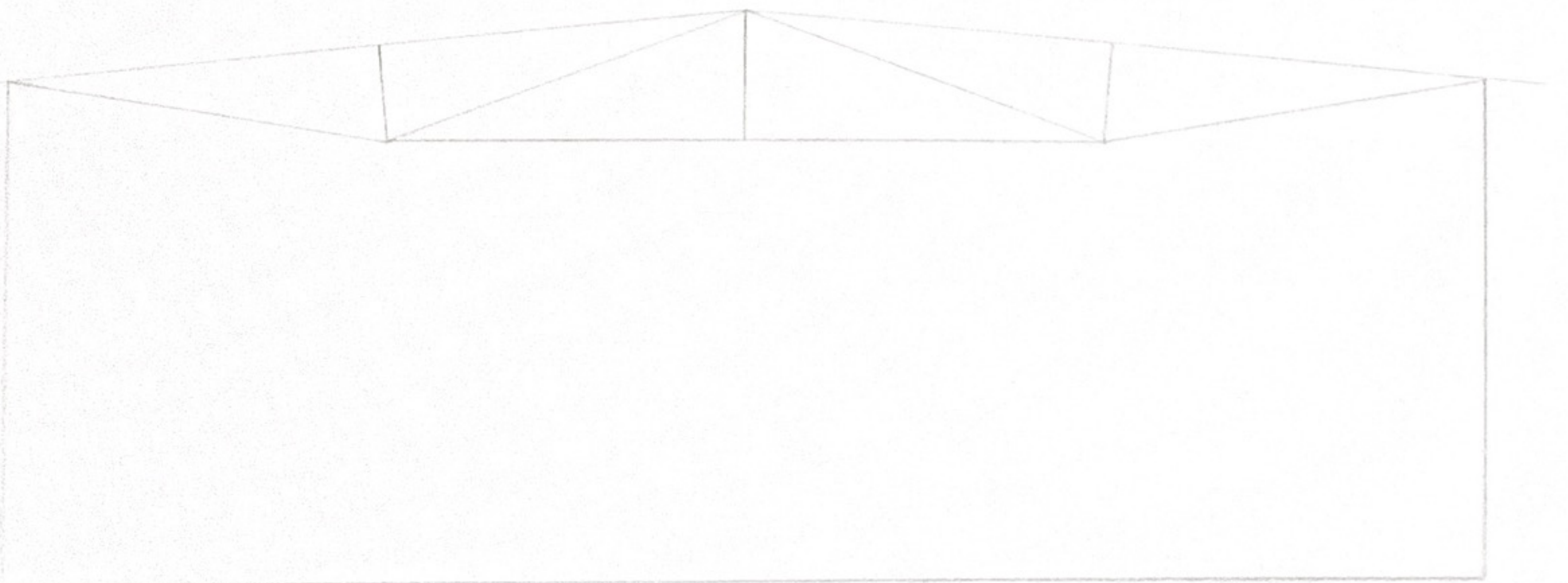




2 ALTERNATIVE SEK. TW

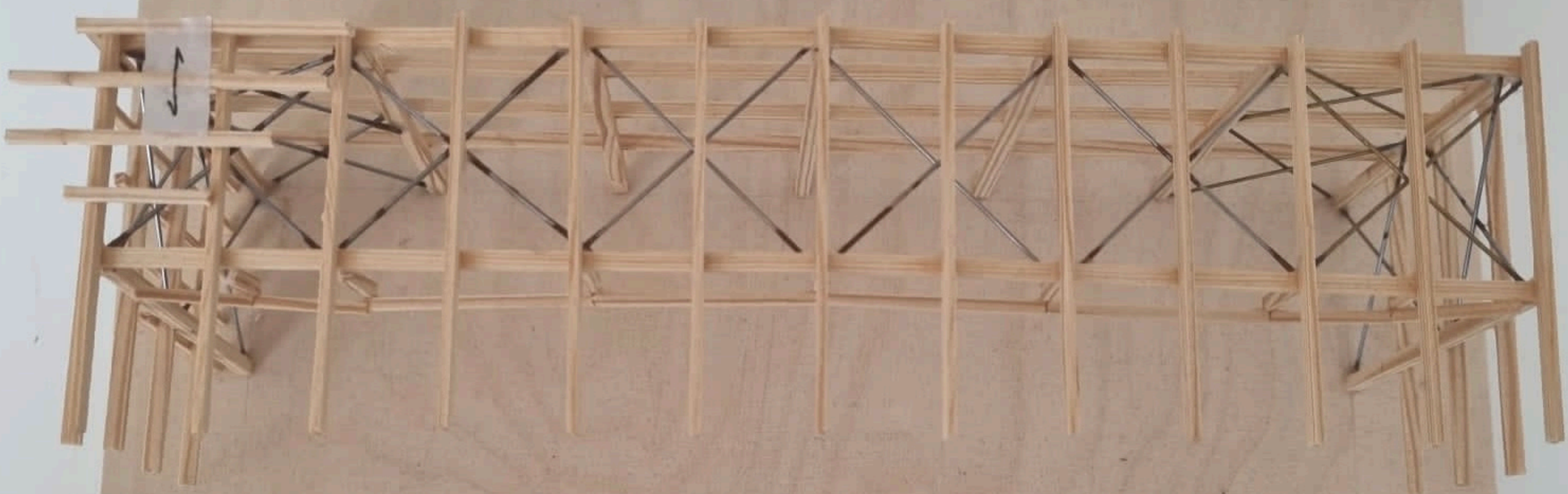


FACHWERKTRÄGER



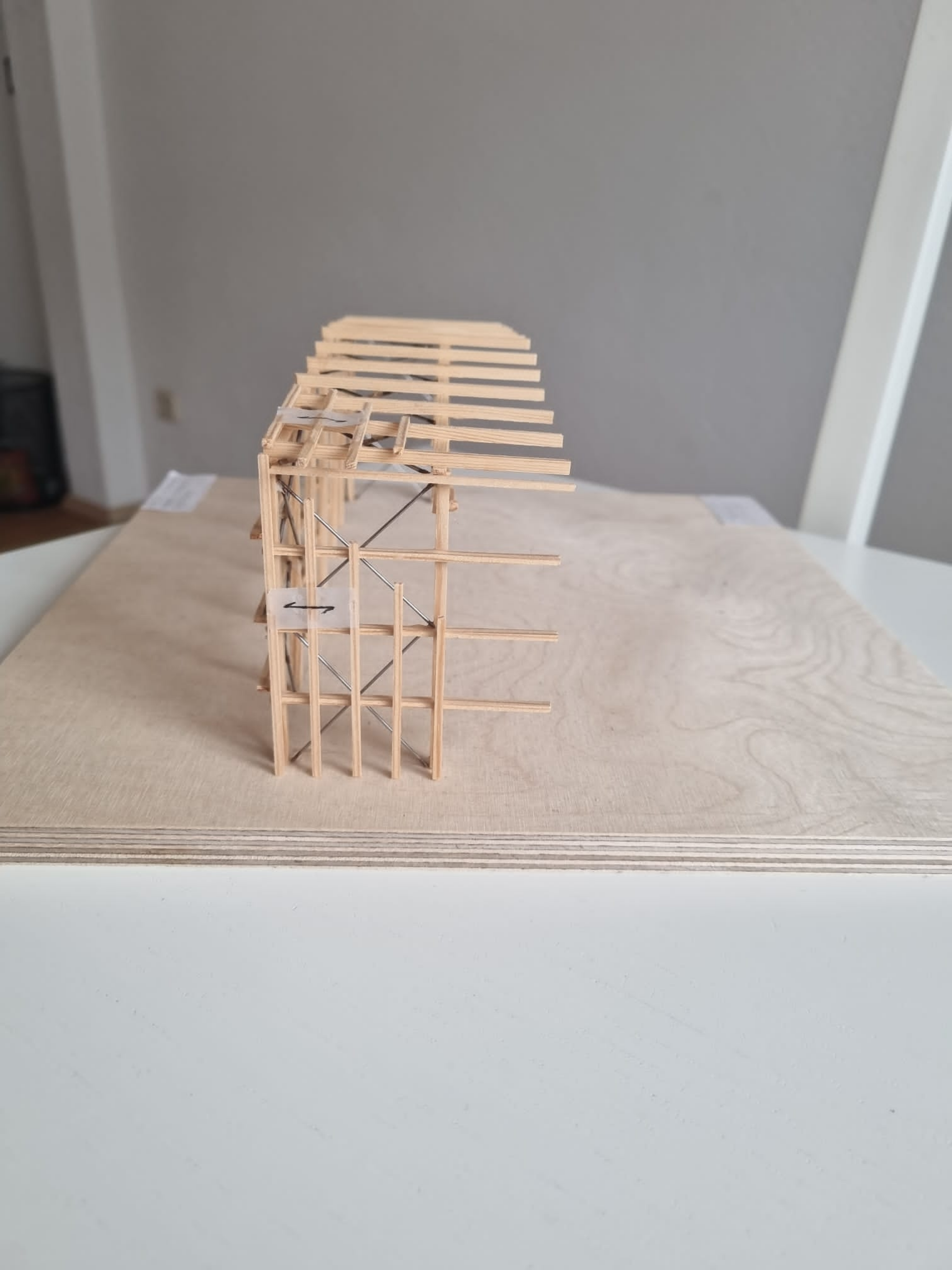
FACHWERKTRÄGER

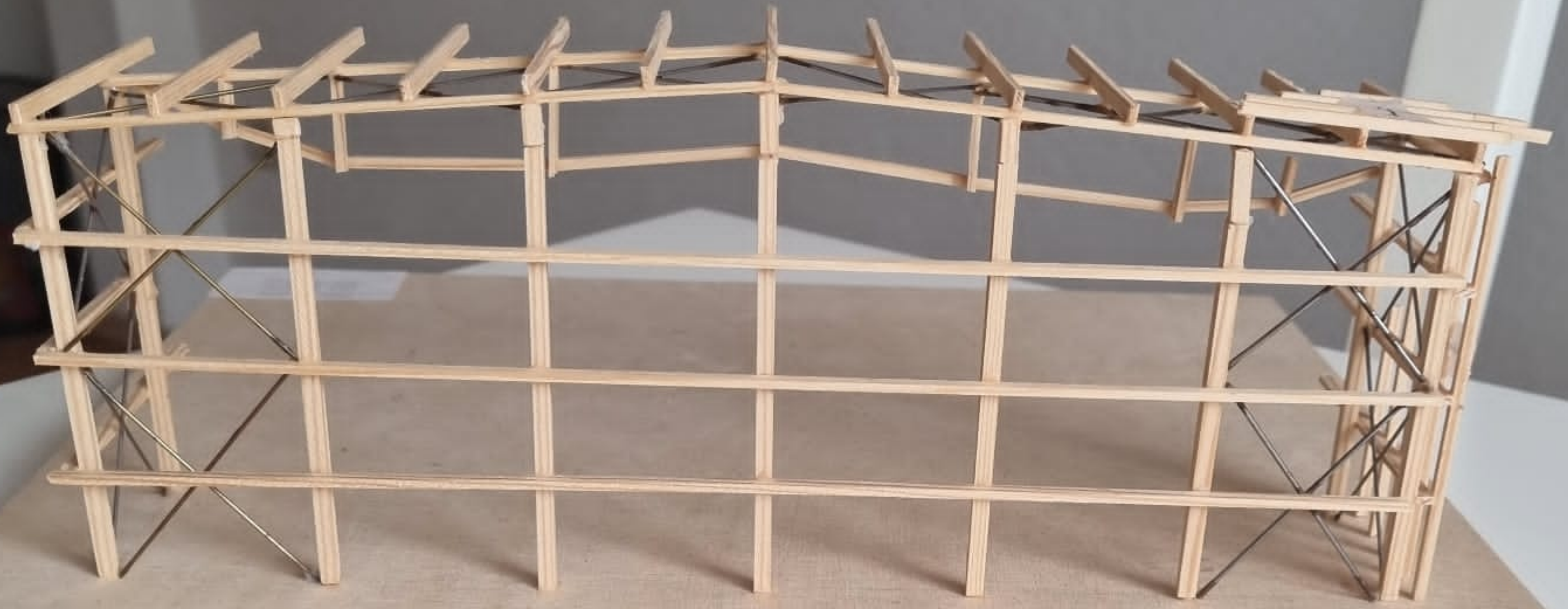
ERGÄNZUNG: (zur Lesestunde)
VERBANDE, VERLÄNGERUNG
TERTIÄRTRAGWERK



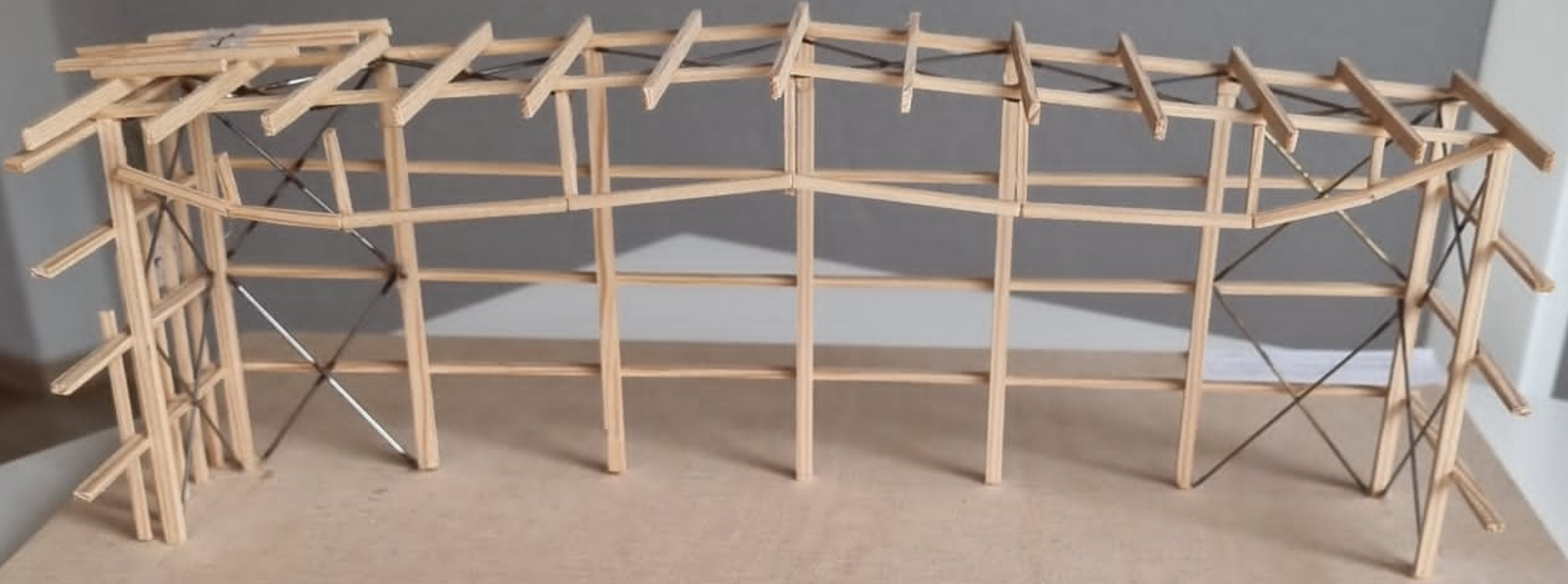
SARA YILMAZ
KM1 WS 22/23
PROF. DR. BAUER







ERGÄNZUNG
VERBÄNDE, VER
TEILARBEITEN



SARA TILMANT
KMI NS 221
PROF. DR. BA



SARA YILMAZ
KM1 WS 22/23
PROF. DR. BAUER