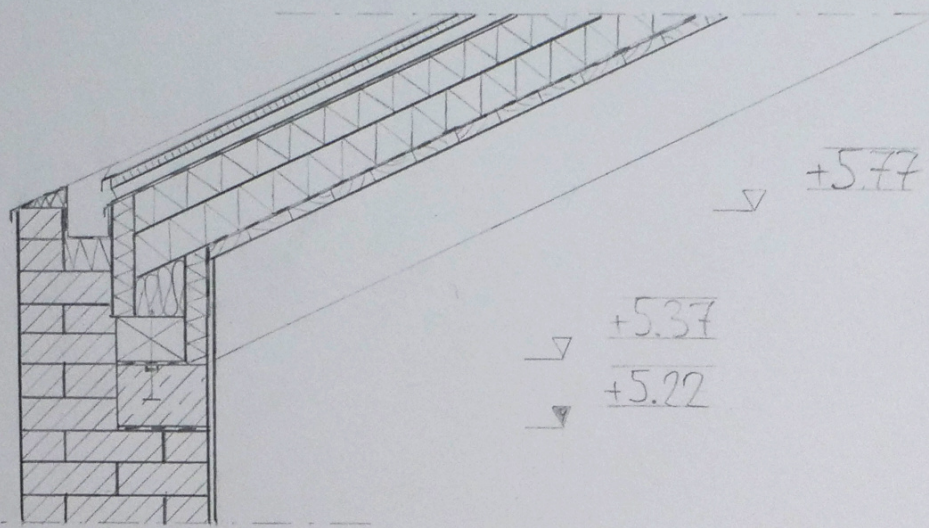


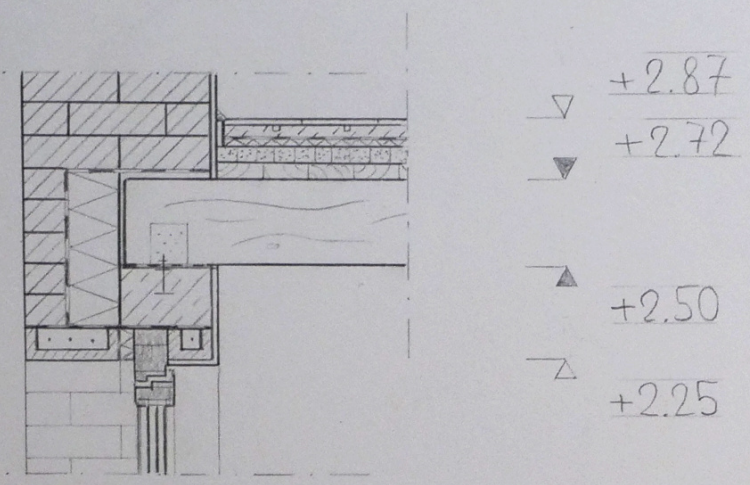
Längsschnitt B-B		
M 1:50	30.06.22	Milo Tenzer KM2 Gmunden





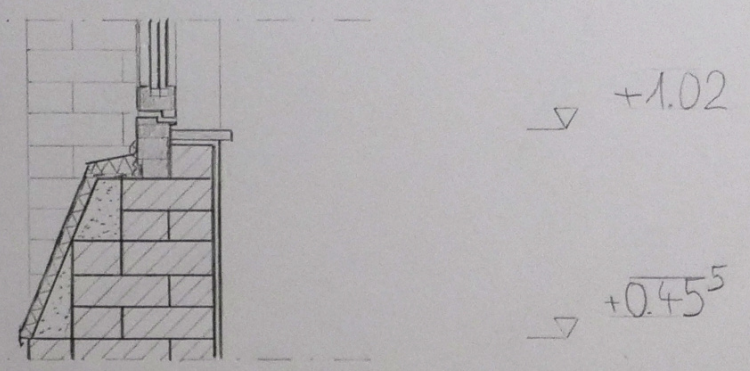
Winkelstehfalz Alu-Blech  
 Gewirrbahn  
 20mm Holzschalung  
 40(x60)mm Lattung/Hinterlüftung  
 Unterdachbahn  
 2x100mm Holzfaserdämmplatten  
 feuchteadaptive Dampfbremse  
 40mm Sichtschalung NuF  
 Sparren 16x24

DACHAUFBAU



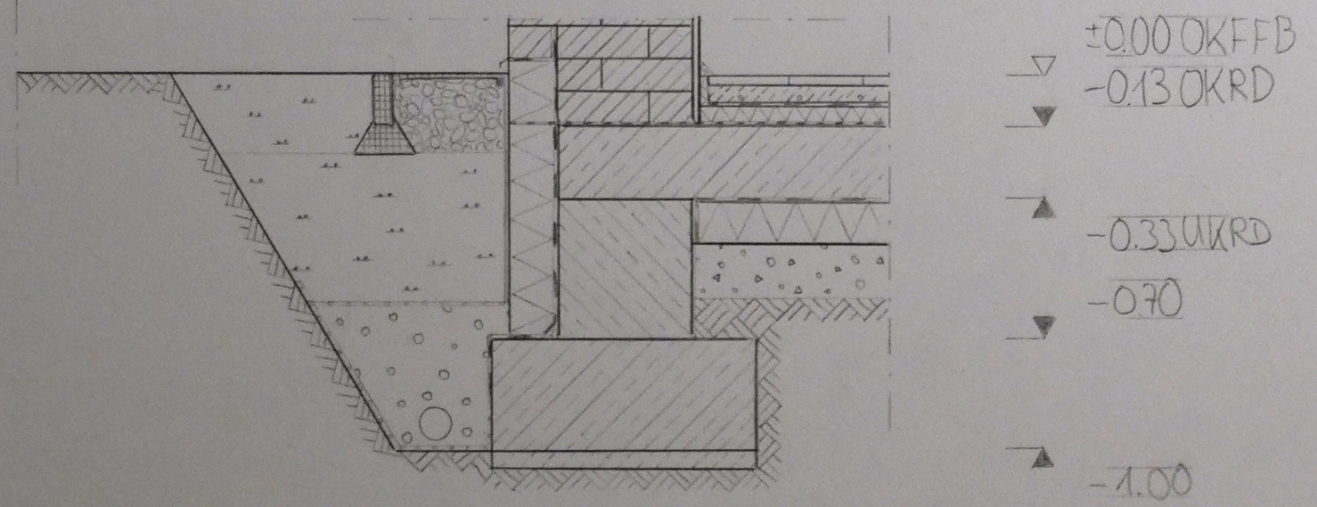
16mm schichtverleimtes Holzparkett  
 30mm Trocken-Heiz-Estrich  
 PE-Folie  
 30mm Trittschalldämmung MW  
 40mm Sandschüttung in Pappwaben  
 Rieselschutz  
 40mm Holzschalung NuF  
 sichtbarer Holzbalken 16x22

GESCHOSSDECKE



20mm schichtverleimtes Holzparkett  
 60mm Heizestrich  
 Trennlage  
 30mm Trittschalldämmung  
 bituminöse Abdichtung  
 200mm Stb-Bodenplatte  
 Sperrbahn  
 120mm Perimeterdämmung  
 150mm kapillarbrechende Schicht

BODENAUFBAU

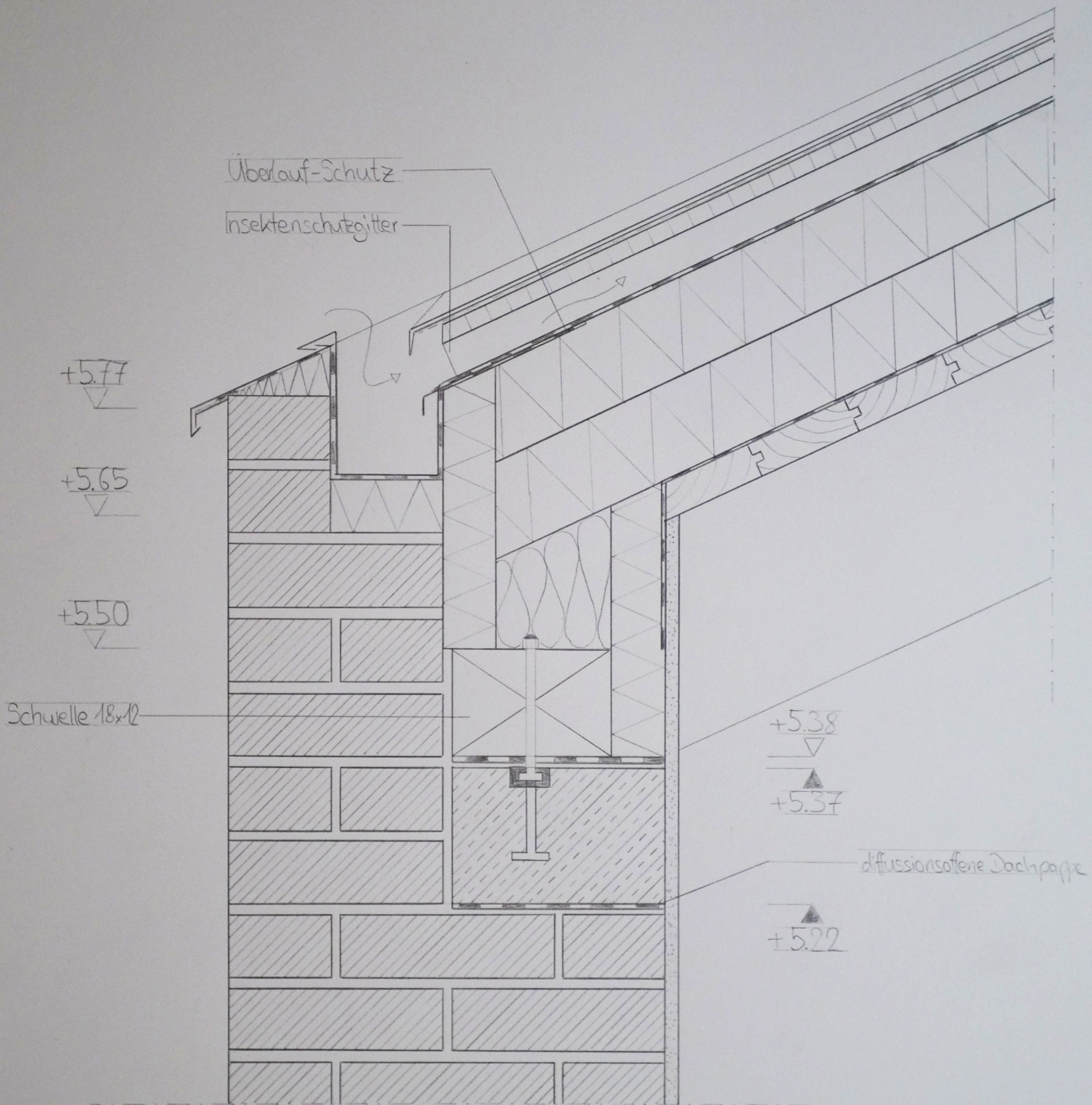


490mm Mauerwerk NF im  
 Blockverband, außen sichtbar  
 15mm Innenputz

WANDAUFBAU

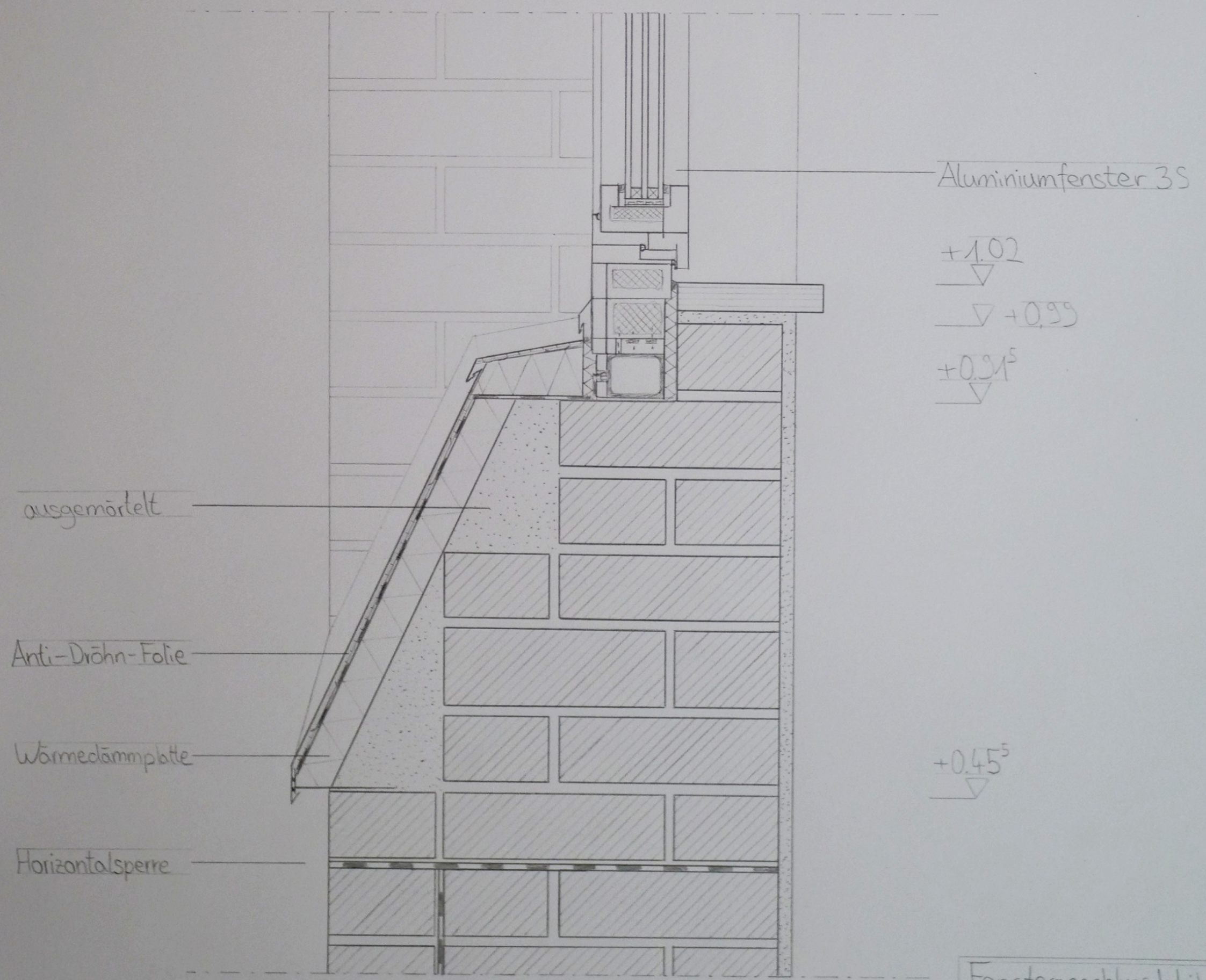
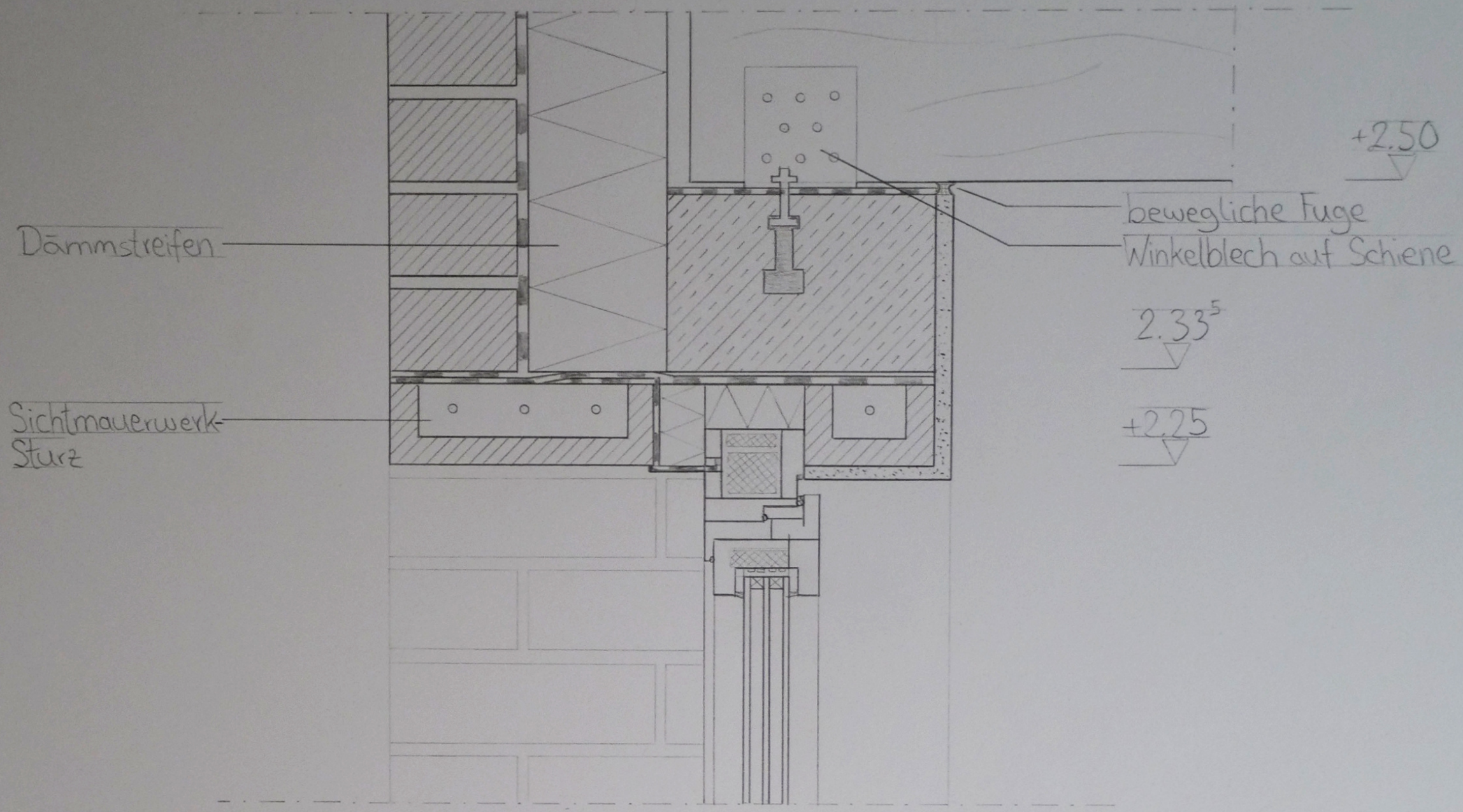
Fassadenschnitt/Schnitt 1			
M 1:20	30.06.22	Nils Tenzer	
		KM2	Gaupler





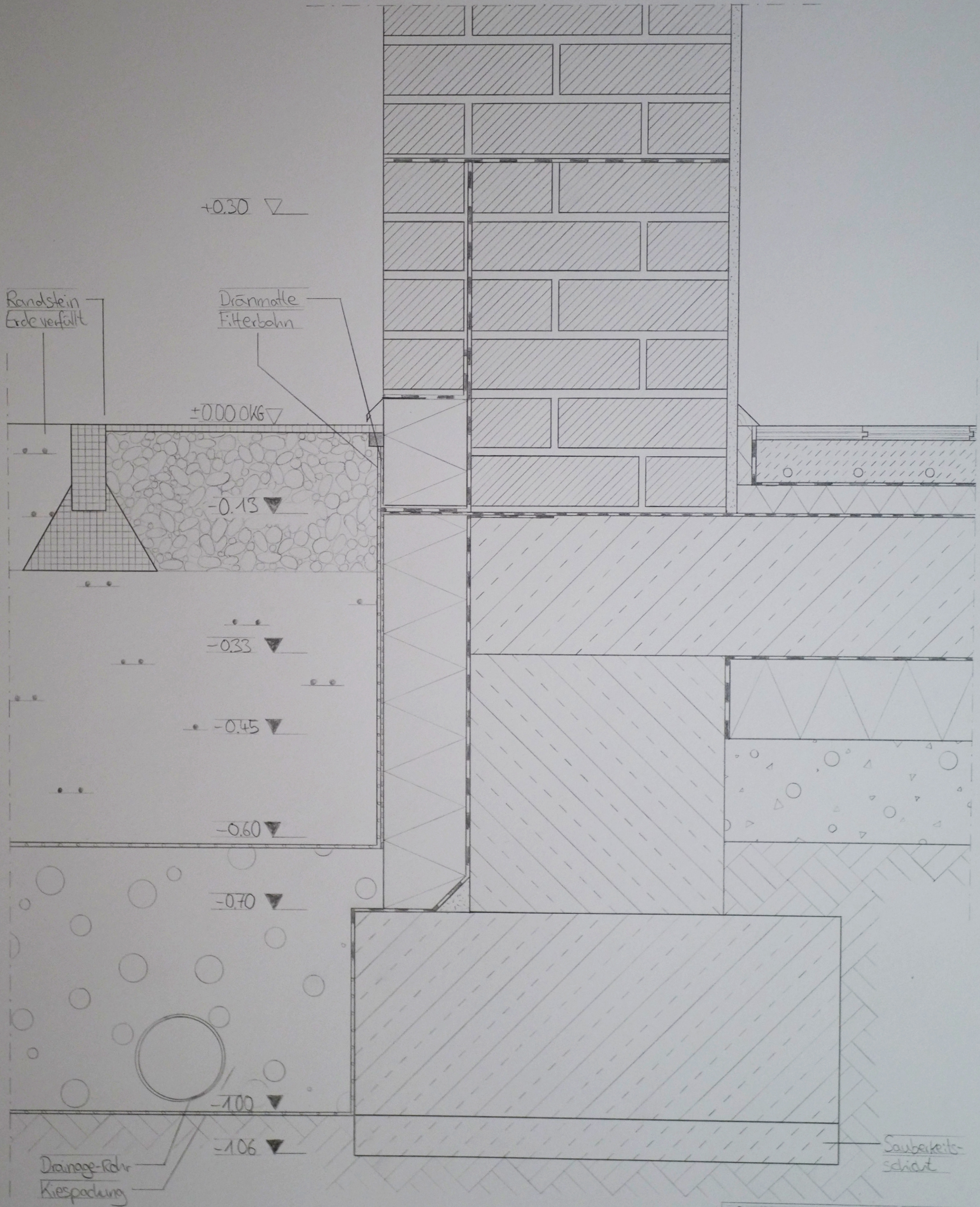
Traufdetail / Schnitt 2			
M 1:5	30.06.22	Nils Tenzer	
		KM2	Gaupler





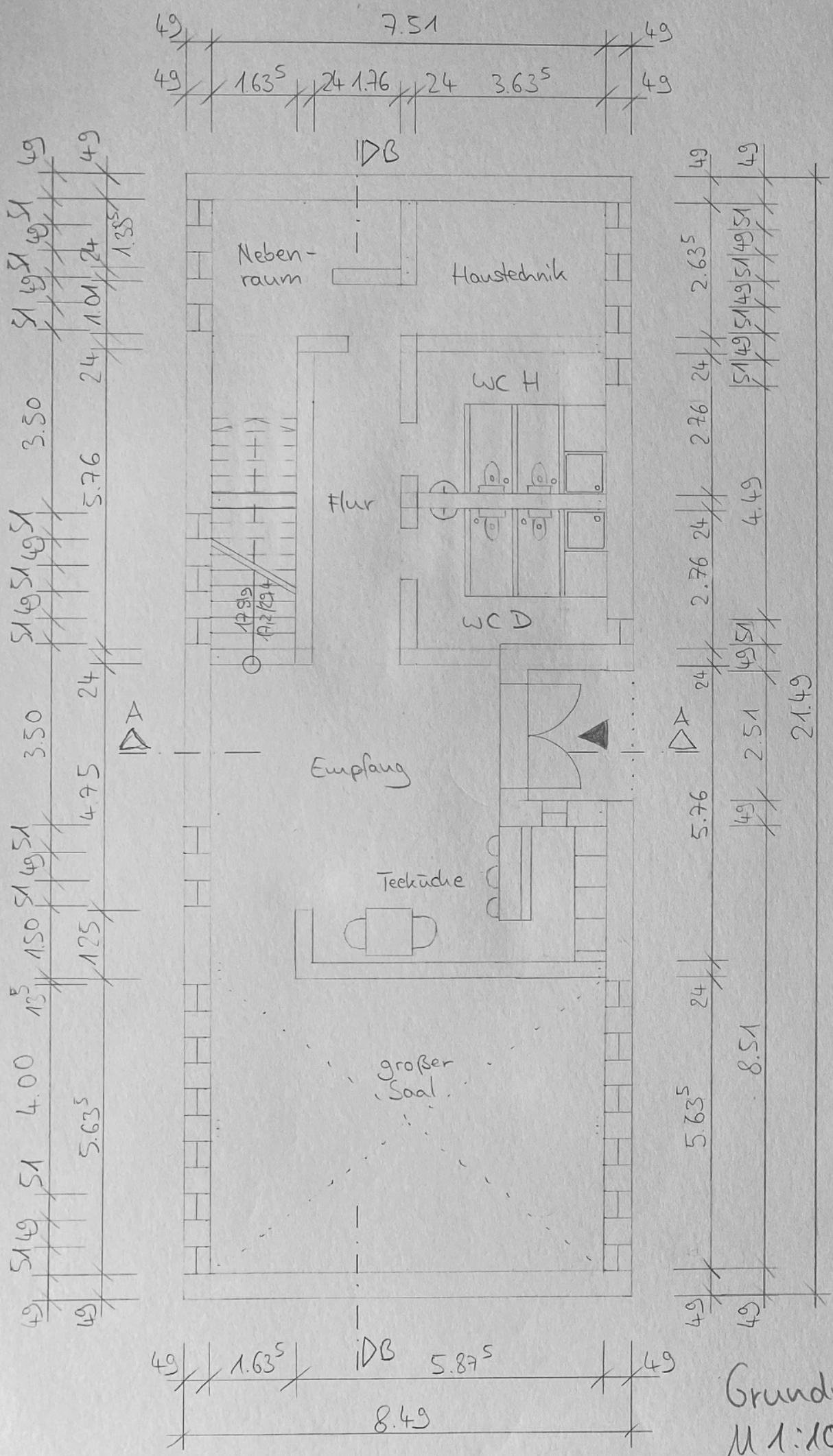
Fensteranschlussdetail/Sch.3  
 M 1:5 30.06.22 Nils Tenzer  
 KM2 Gumpfer



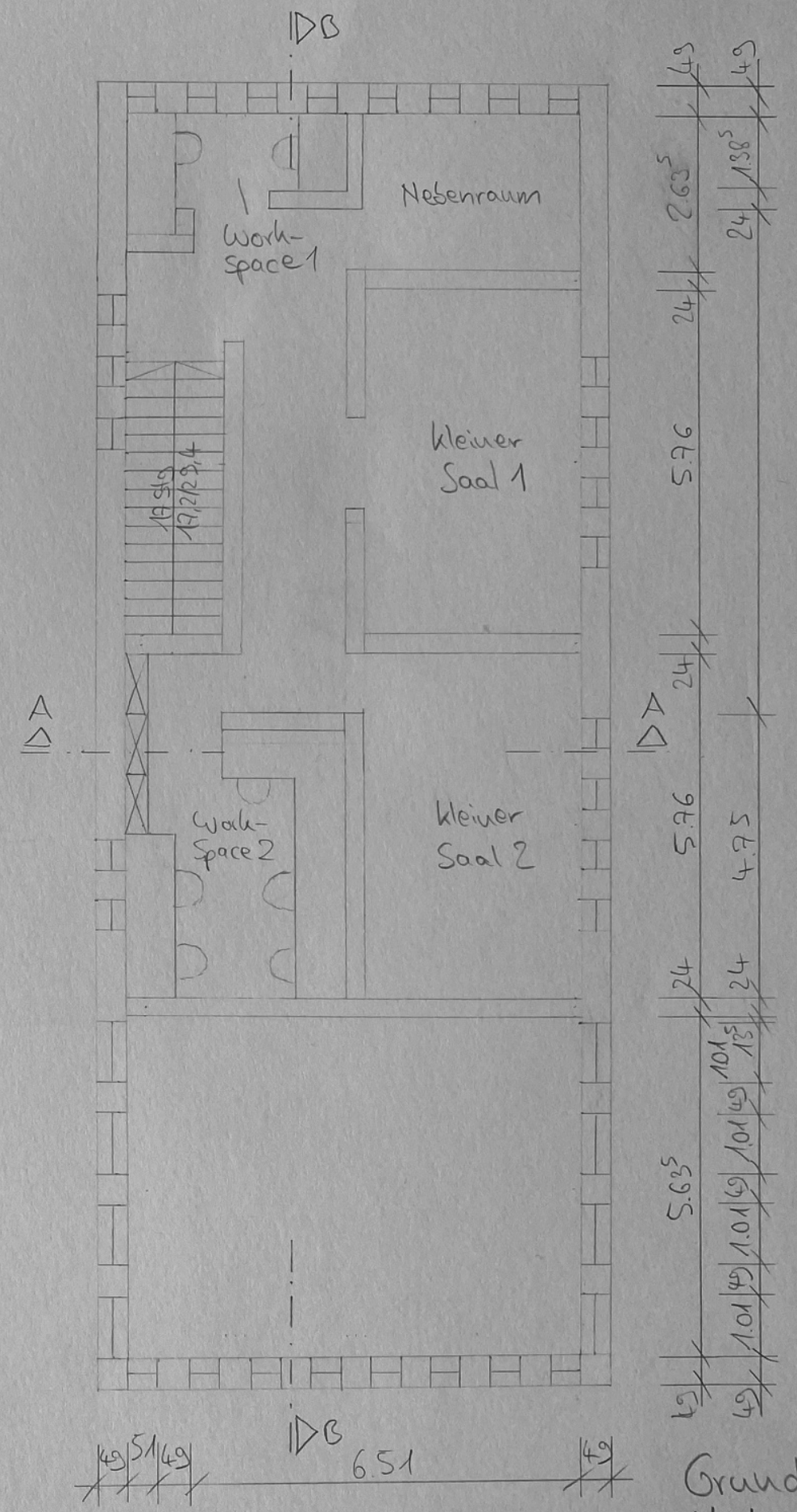


Sockeldetail / Schnitt 4  
 M 1:5 30.06.22 Mils Tenzer  
 KM2 Gampfer





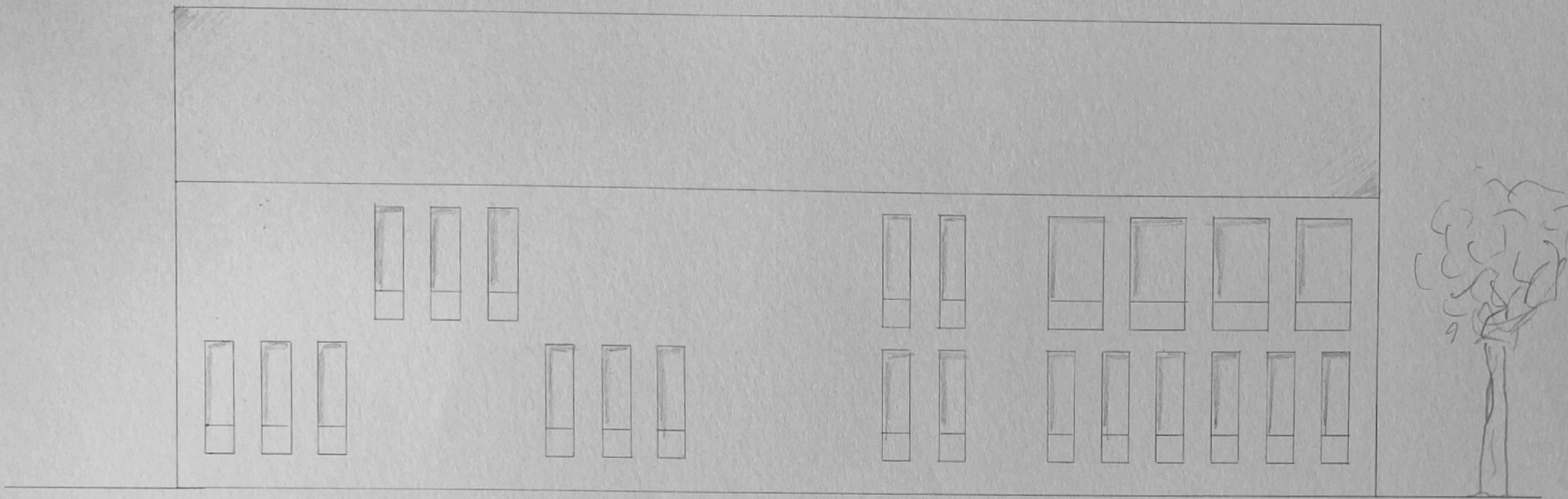
Grundriss EG  
M 1:100



Grundriss OG  
M 1:100

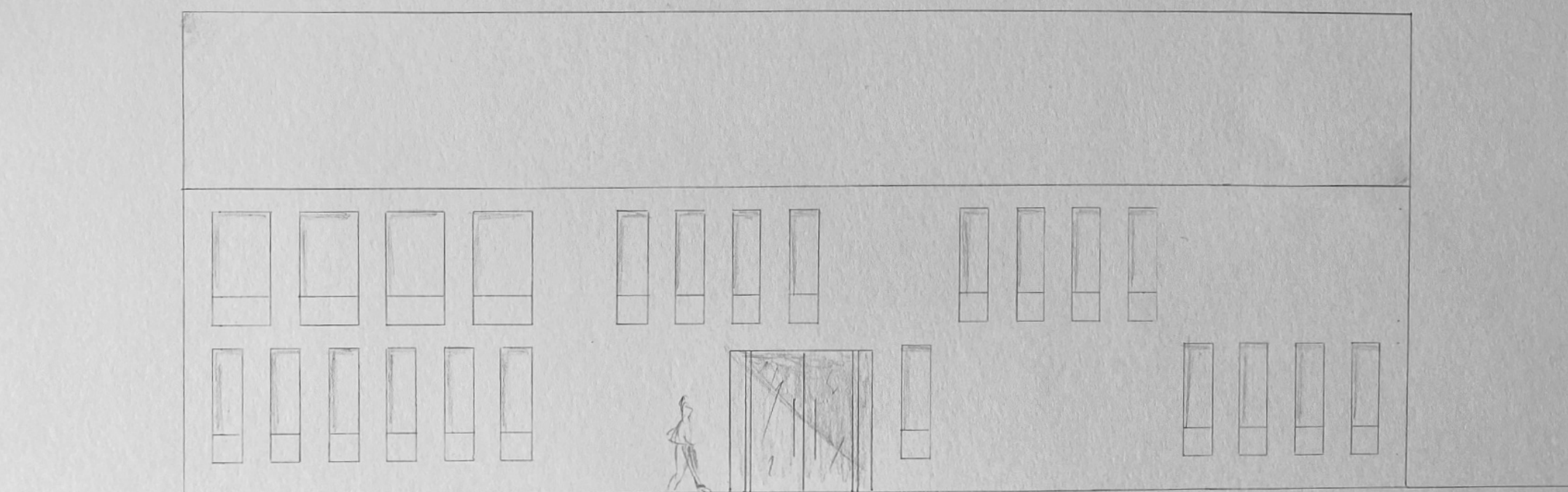
Nils Tenzer, KM2, Prof. Gangler, 07.04.2022





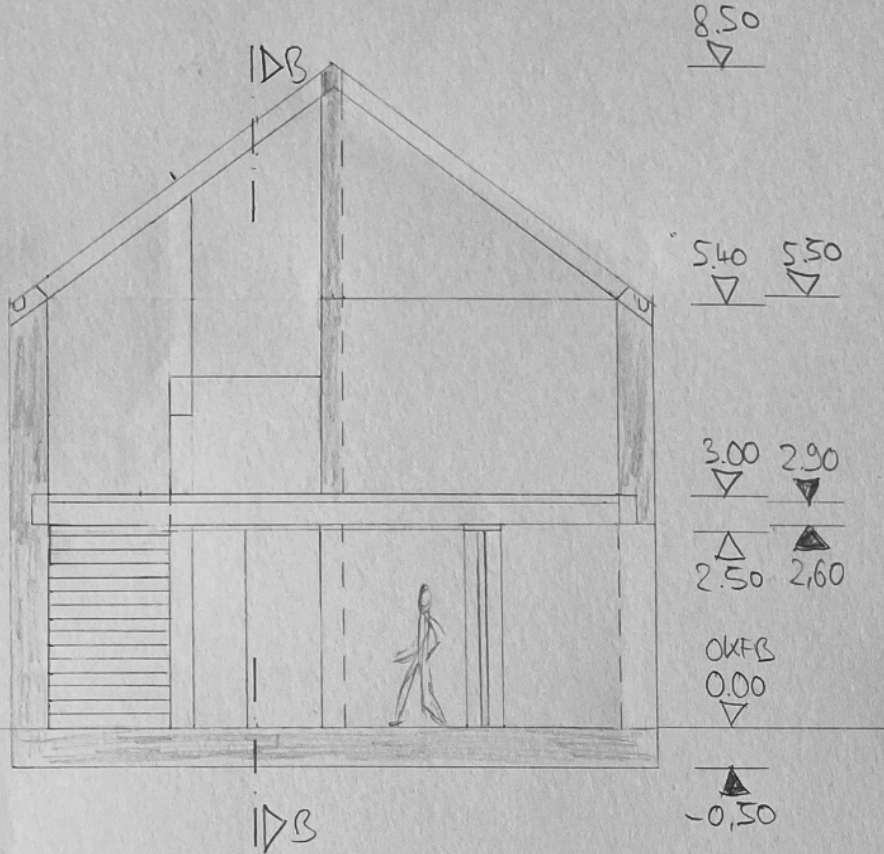
Ansicht West  
M 1:100

Nils Tenzer  
KM 2  
Prof. Gaupfer  
07.04.2022

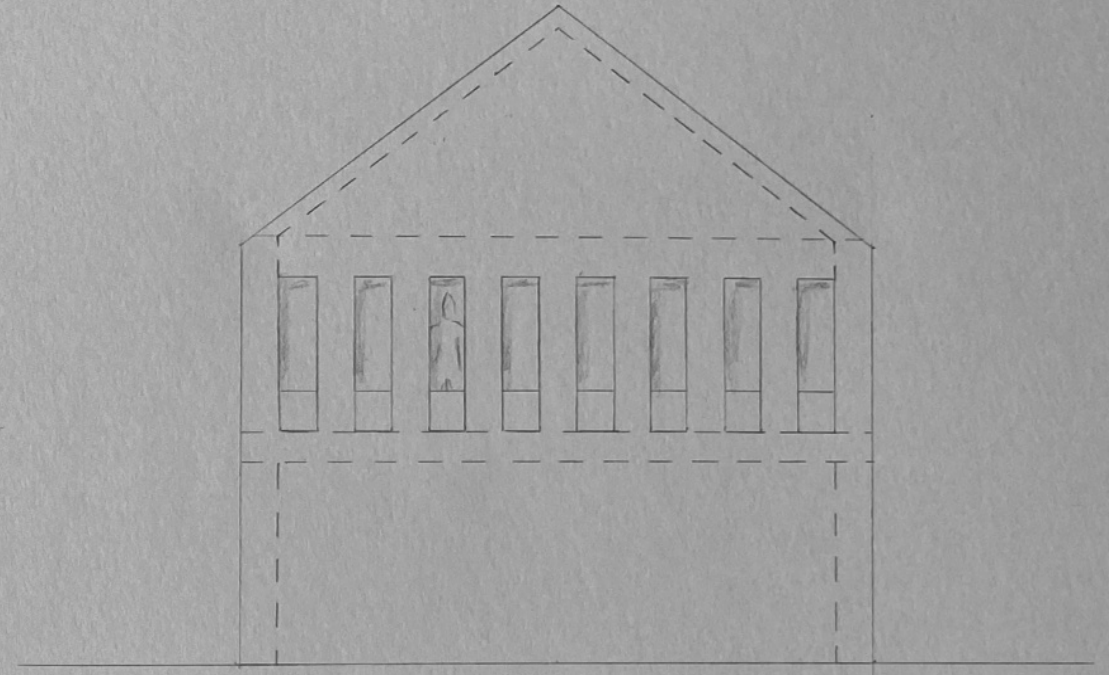


Ansicht Ost  
M 1:100



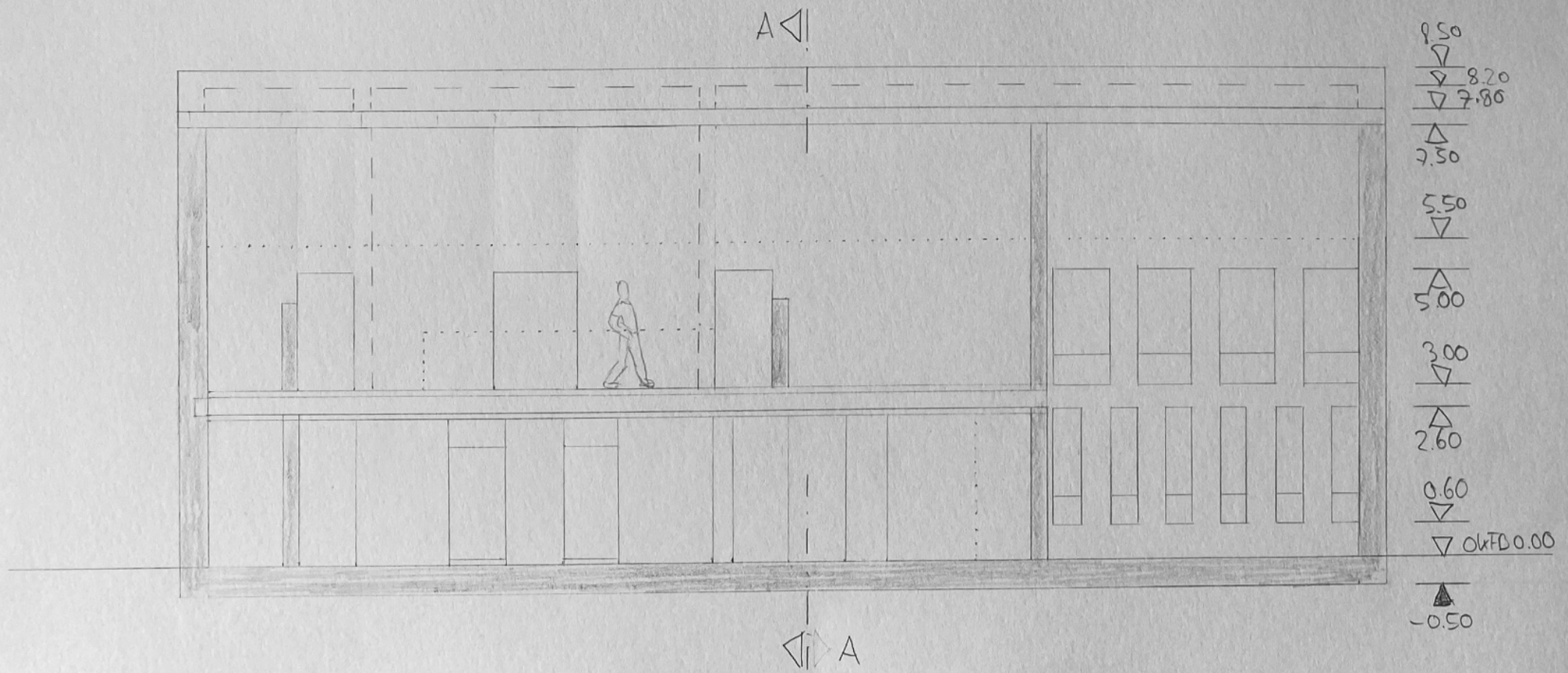


Schnitt A-A  
M 1:100



Ausicht Süd/Nord  
M 1:100

Nils Tenzer  
KM 2  
Prof. Gampfer  
07.04.2022



Schnitt B-B  
M 1:100