



Berrel Berrel Kräutler
Architekten:

Wohnhaus in Rodersdorf

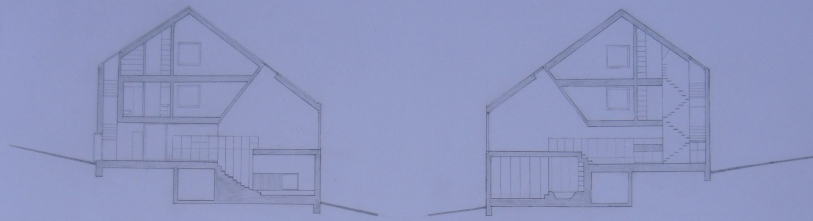
STUDIENGANG E2D - DESIGNMETHODIK 1

WINTERSEMESTER 2019/20

PROF. DIPL. ING. MICHAEL SCHMIDT

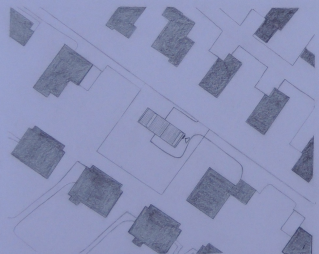
SUSANNE MAYR, JOSEFINE NOSKE

BERREL BERREL KRÄUTLER ARCHITEKTEN

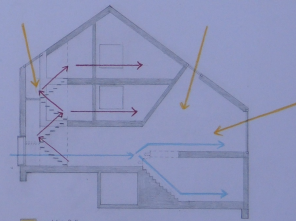


Längsschnitt A-A

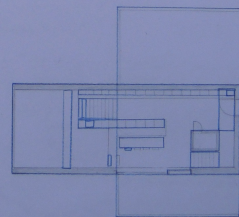
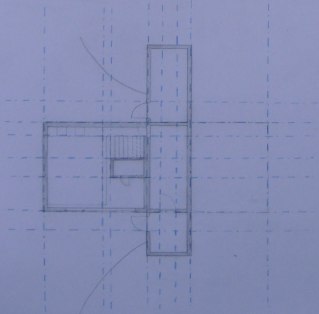
Längsschnitt B-B



Lageplan 1:500



■ Lüftungspfad
■ Wind
■ Sperrschicht

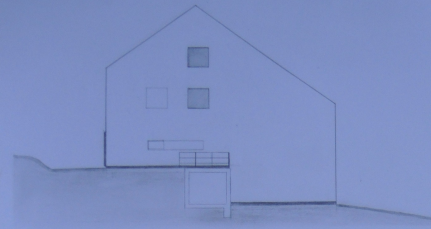


SUSANNE MAYR, JOSEFINE NOSKE

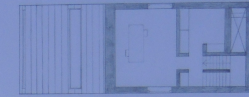
DEM 1
Prof. Dipl.-Ing. Michael Schmidt

MASSSTAB 1:100

WOHNHAUS IN RODERSDORF



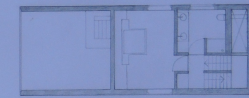
Vorderansicht



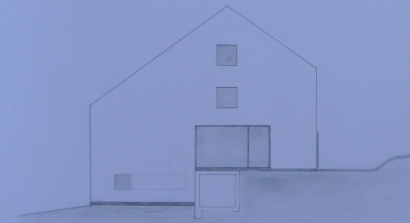
Zweites Obergeschoss



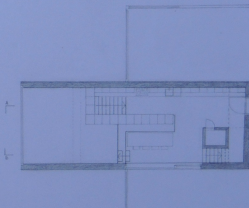
Rechtsansicht



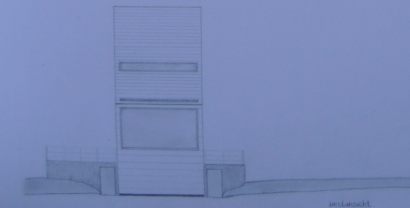
Erstes Obergeschoss



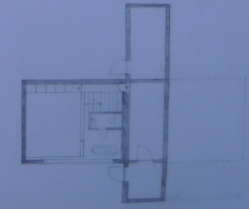
Südansicht



Erstgeschoss



Vorderansicht

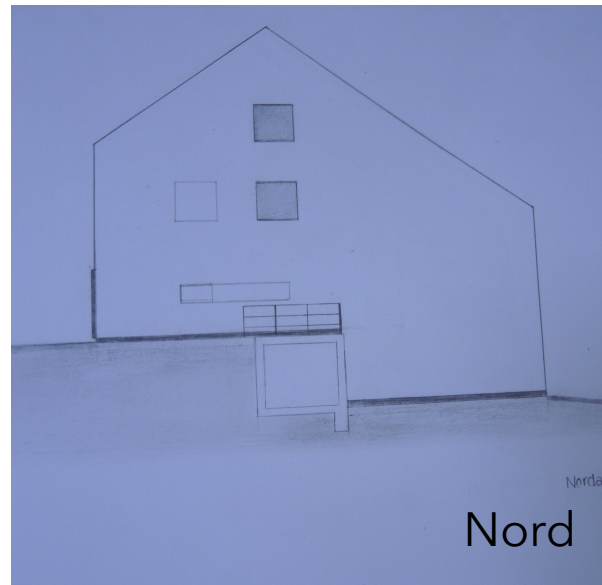
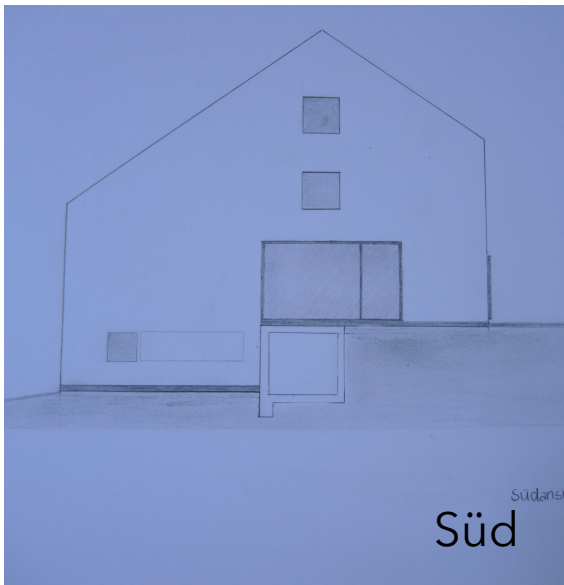
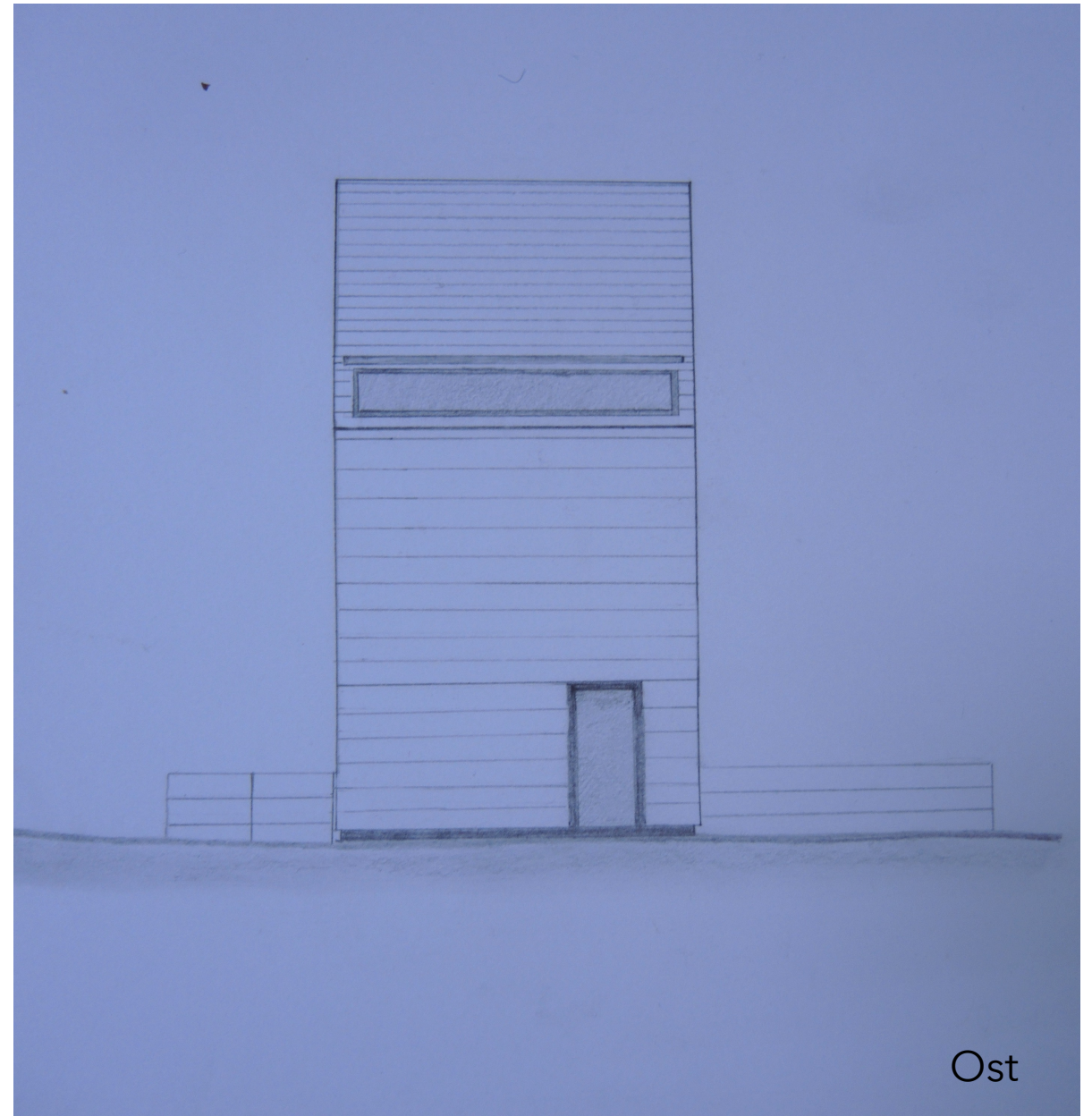


Erstgeschoss

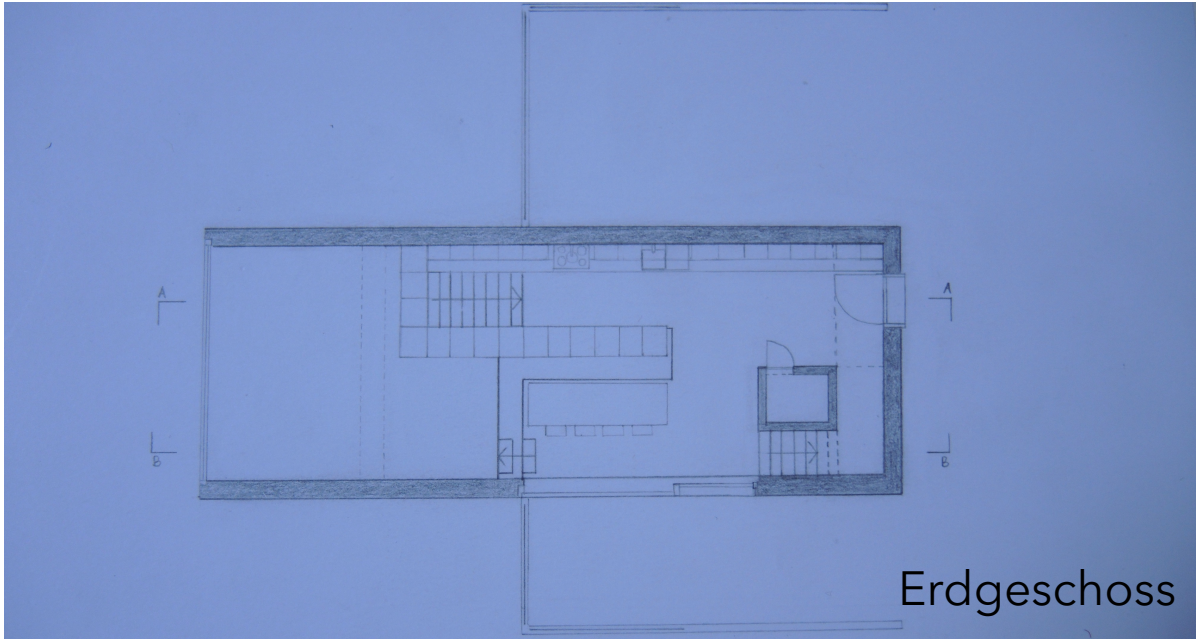
SUSANNE MAYR, JOSEFINE NOSKE

DEM 1
Prof. Dipl.-Ing. Michael Schmidt

MASSSTAB 1:100



Ansichten



Erdgeschoss



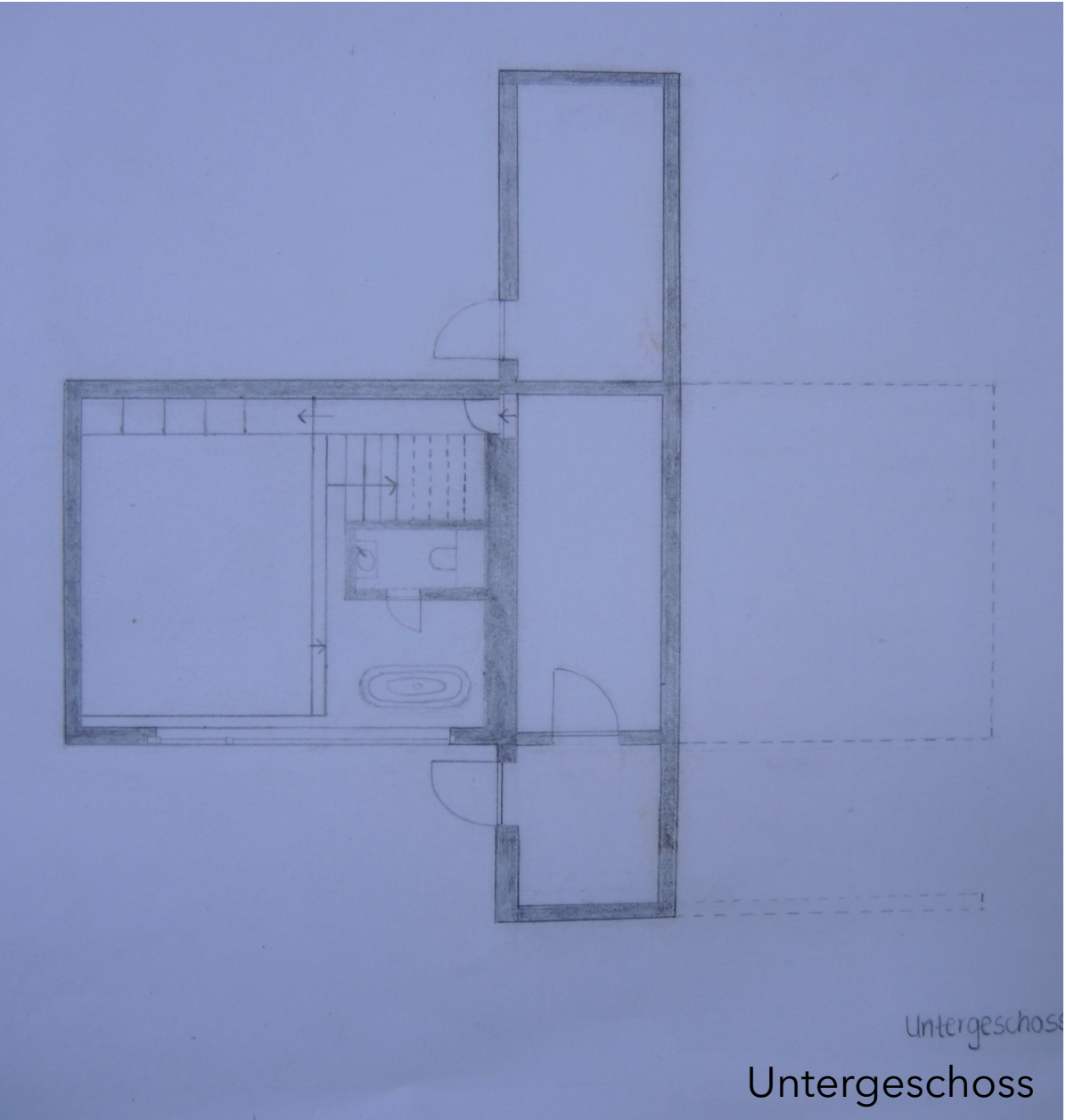
Zweites

Obergeschoss



Erstes Ob

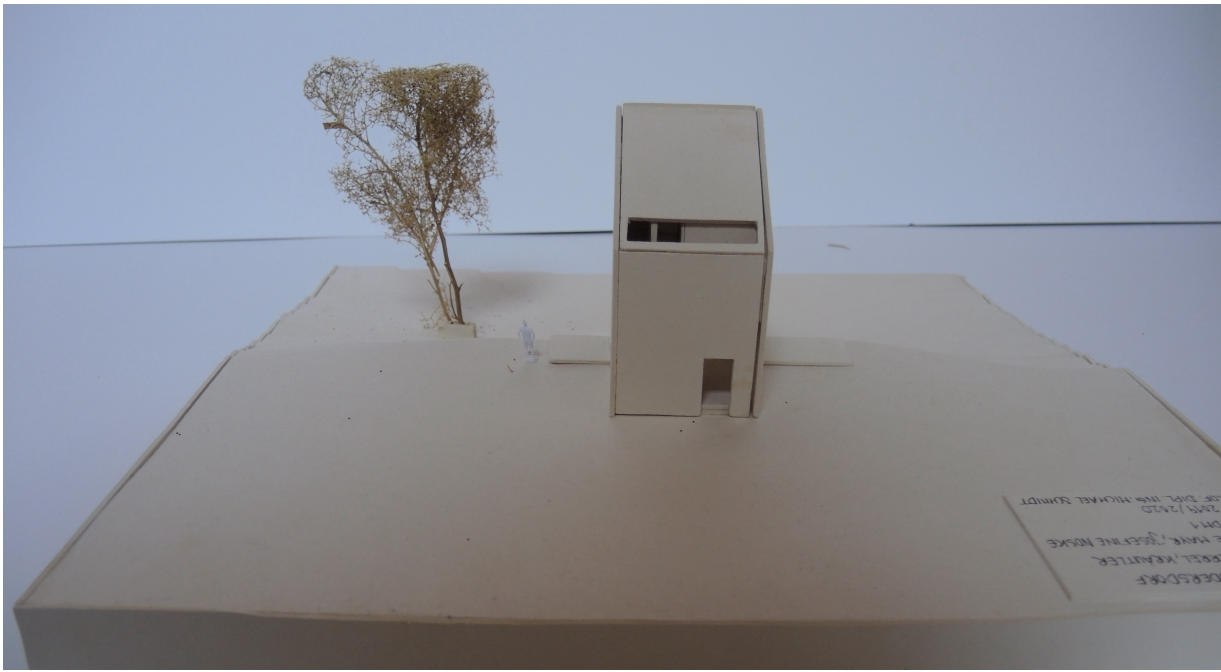
Obergeschoss

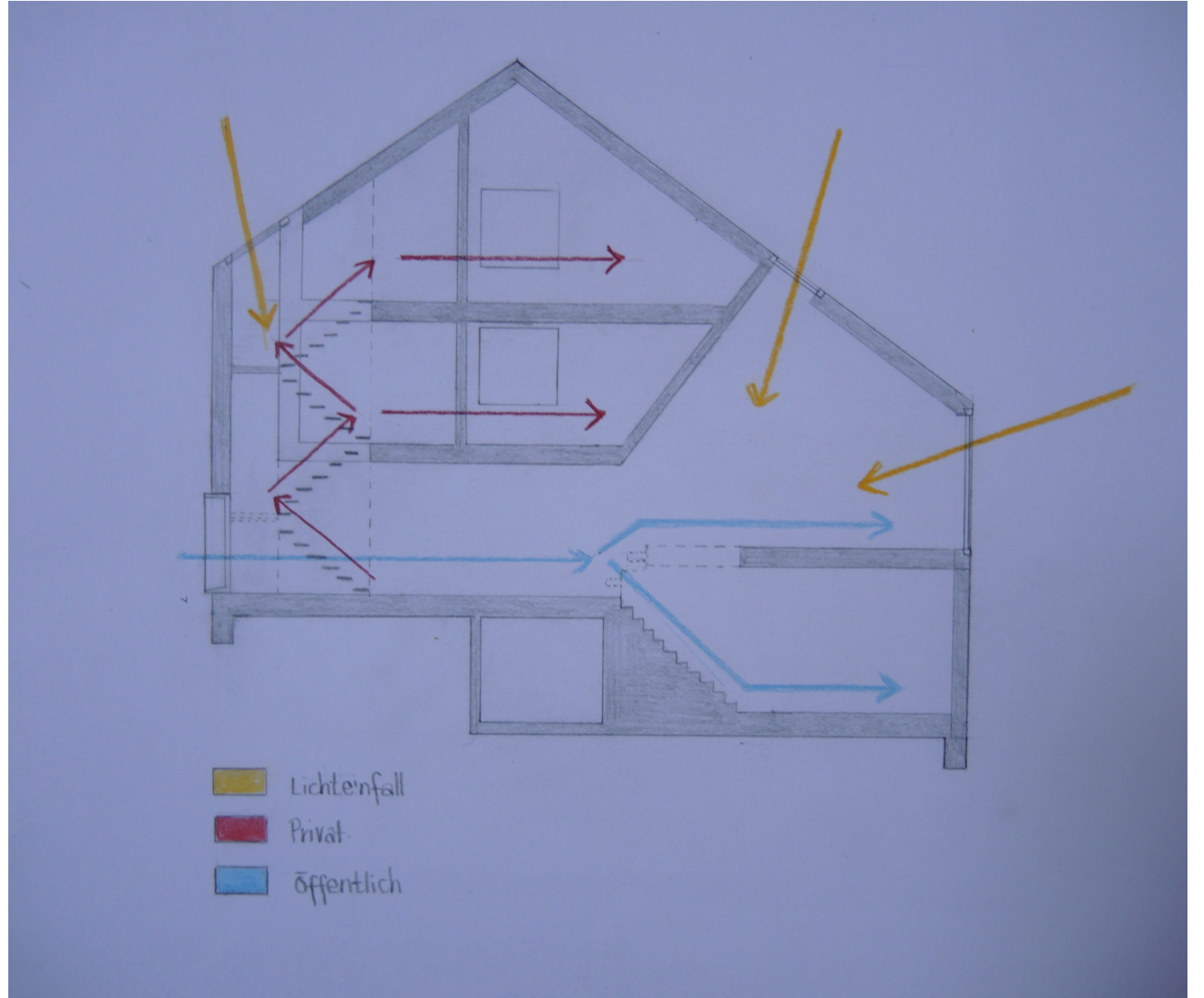
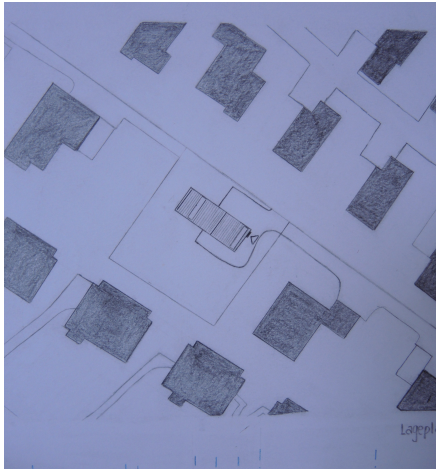
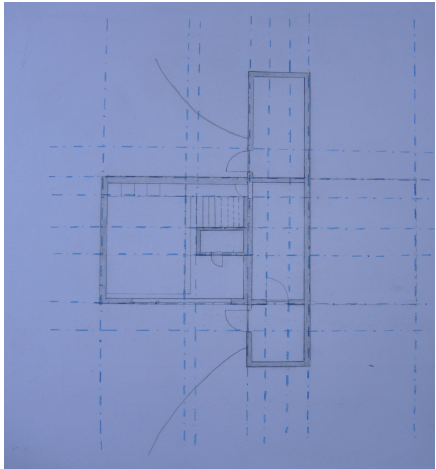
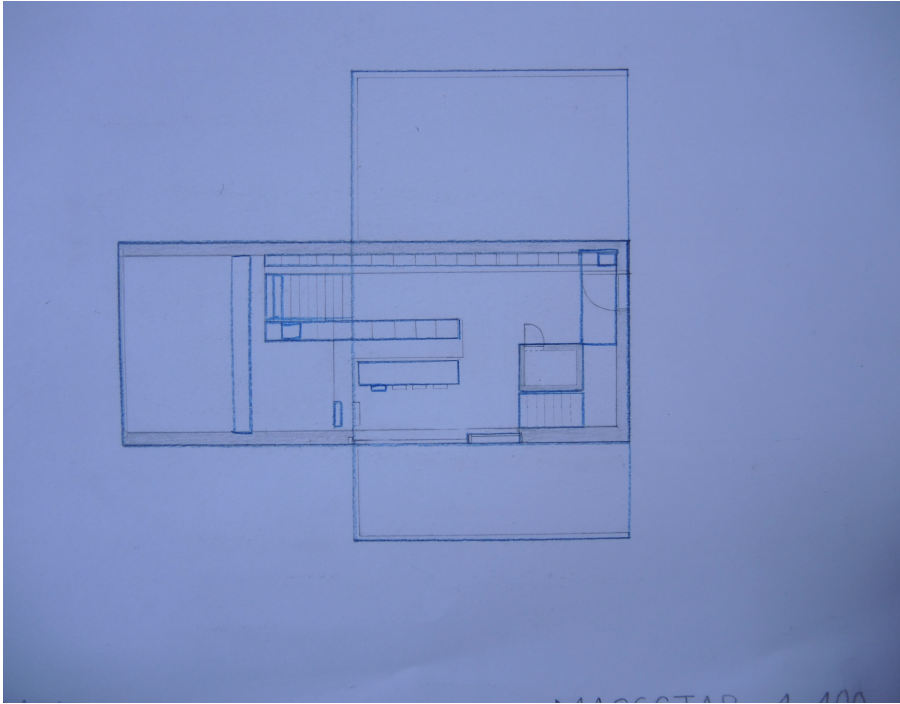


Untergeschoss

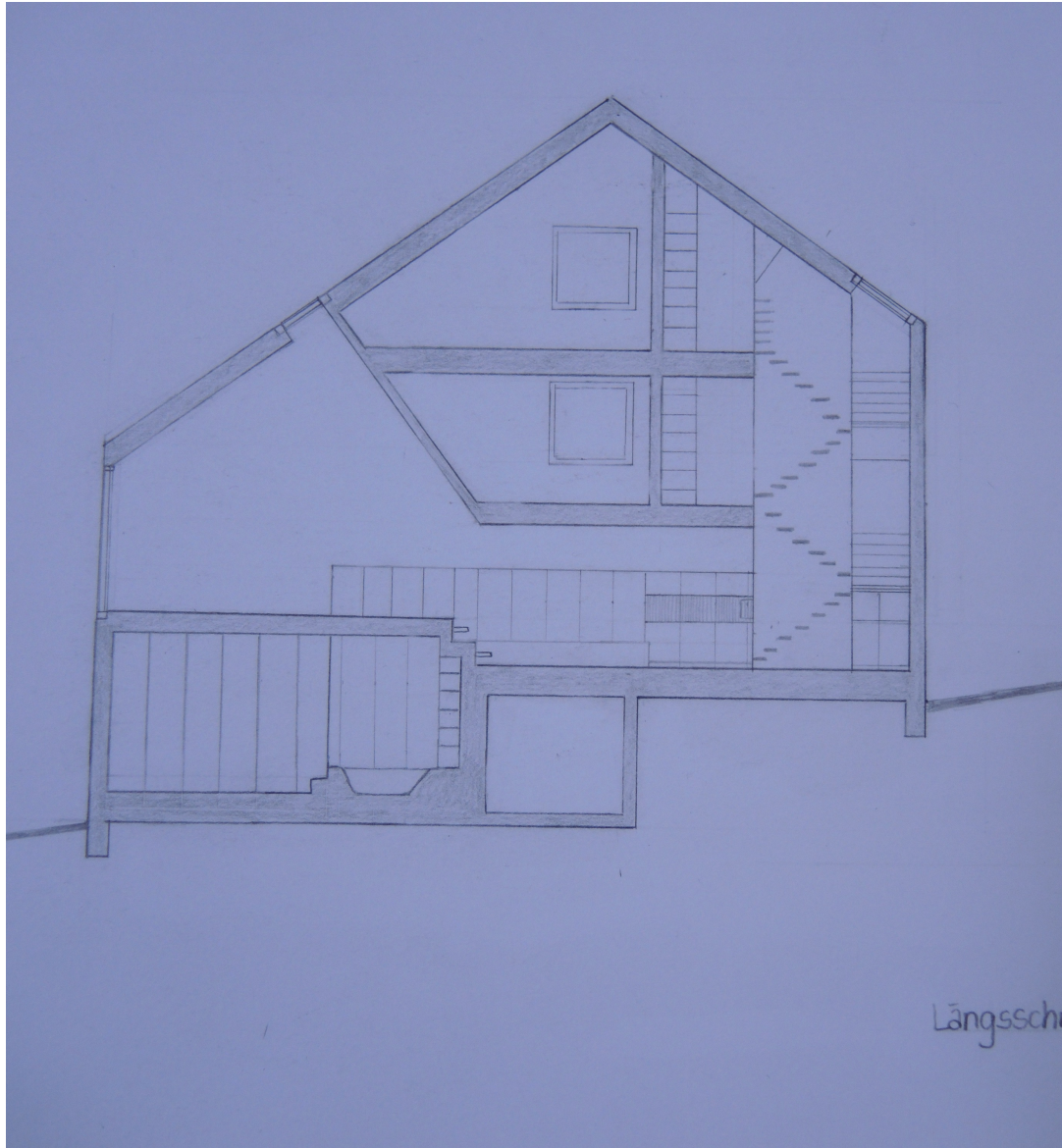
Untergeschoss

Grundrisse





Analyse



Schnitte

