

Badehaus

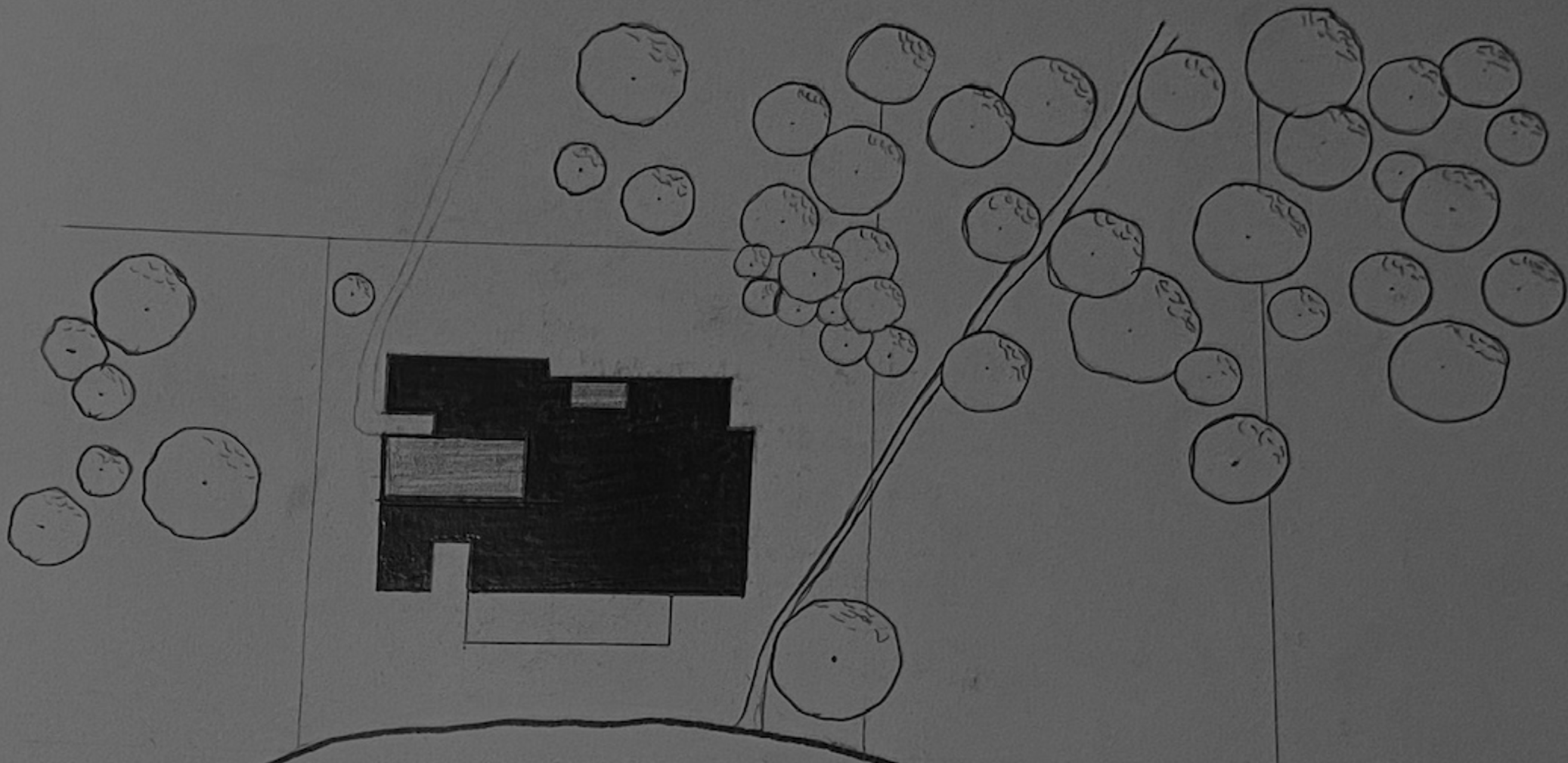
Laura Sturm

Wintersemester 20/21

Designmethodik 1

Leistungsnachweis 2

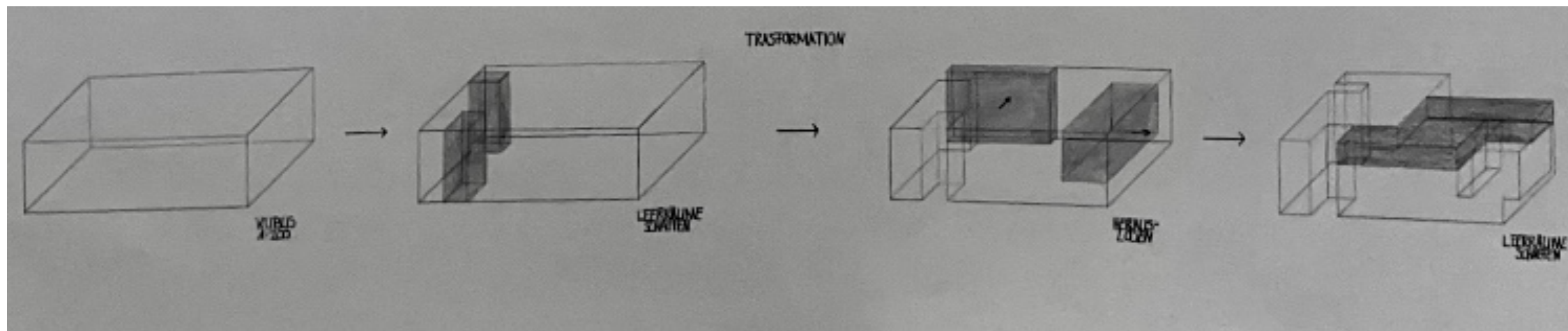
Timo Plachta

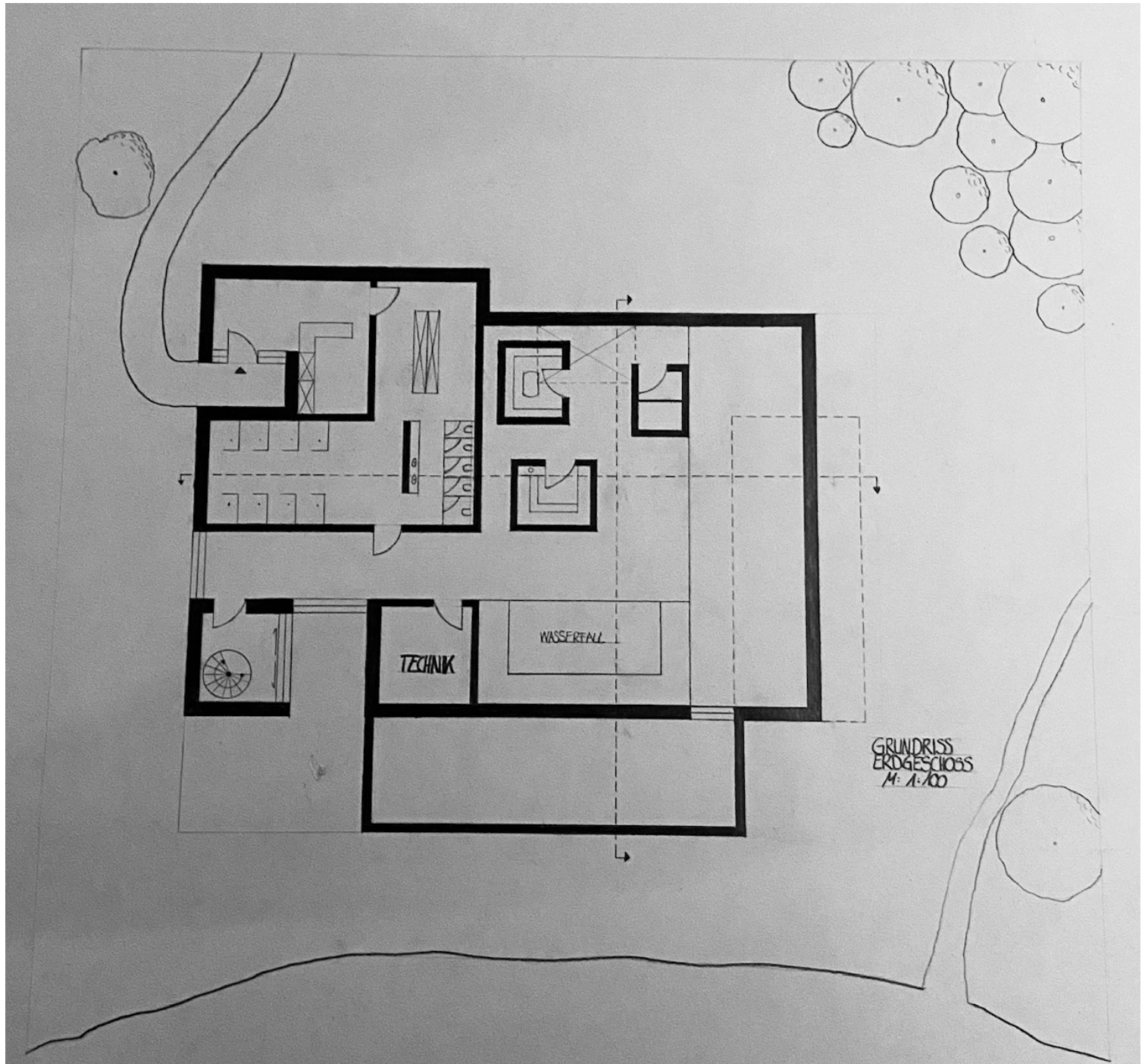


Eine Sinnesreise des Körpers

LAGEPLAN
1:500

Transformation

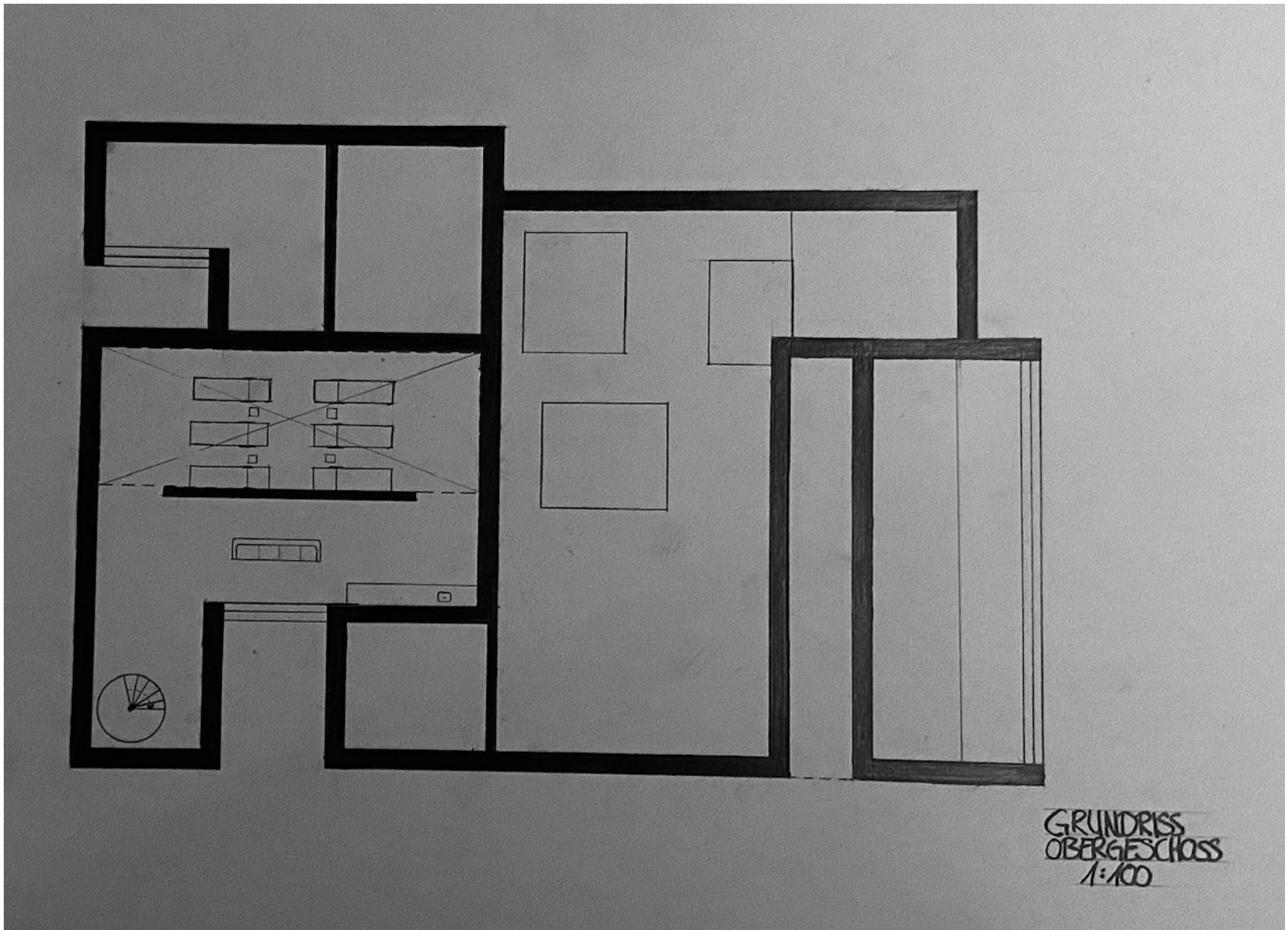




TECHNIK

WASSERTANK

GRUNDRISS
ERDGESCHOSS
M: 1:100



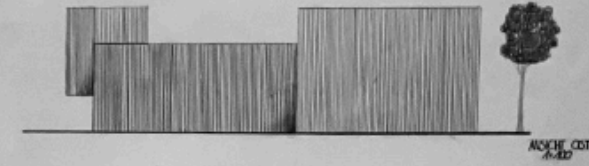
GRUNDRISS
OBERGESCHOSS
1:100



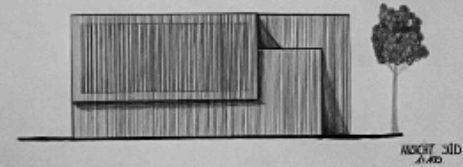
Eine Sinnesreise des Körpers



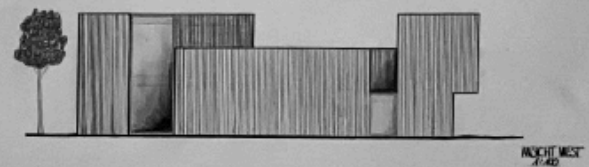
ANSICHT NORD
1:40



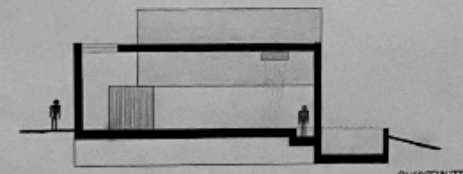
ANSICHT OST
1:40



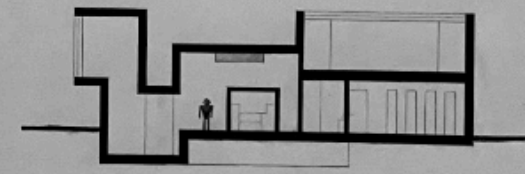
ANSICHT SÜD
1:40



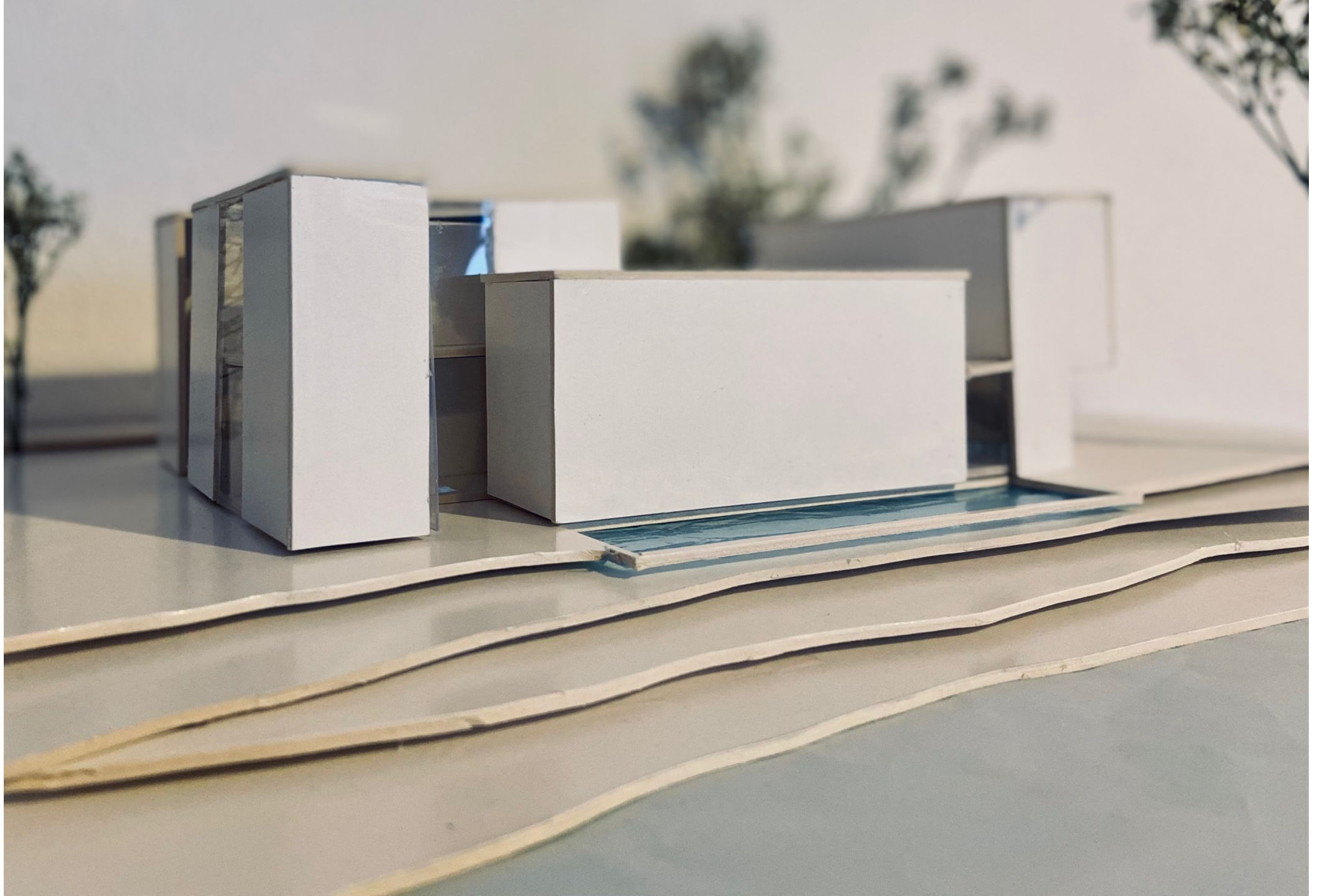
ANSICHT WEST
1:40

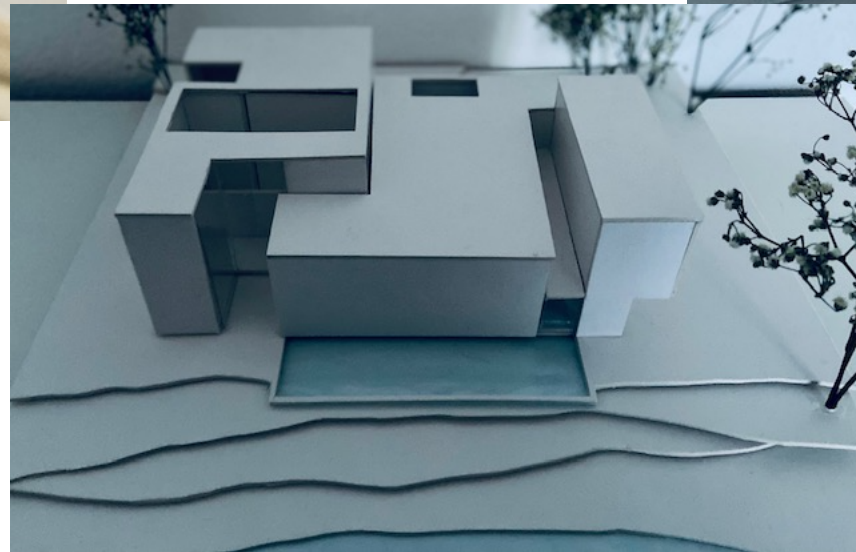
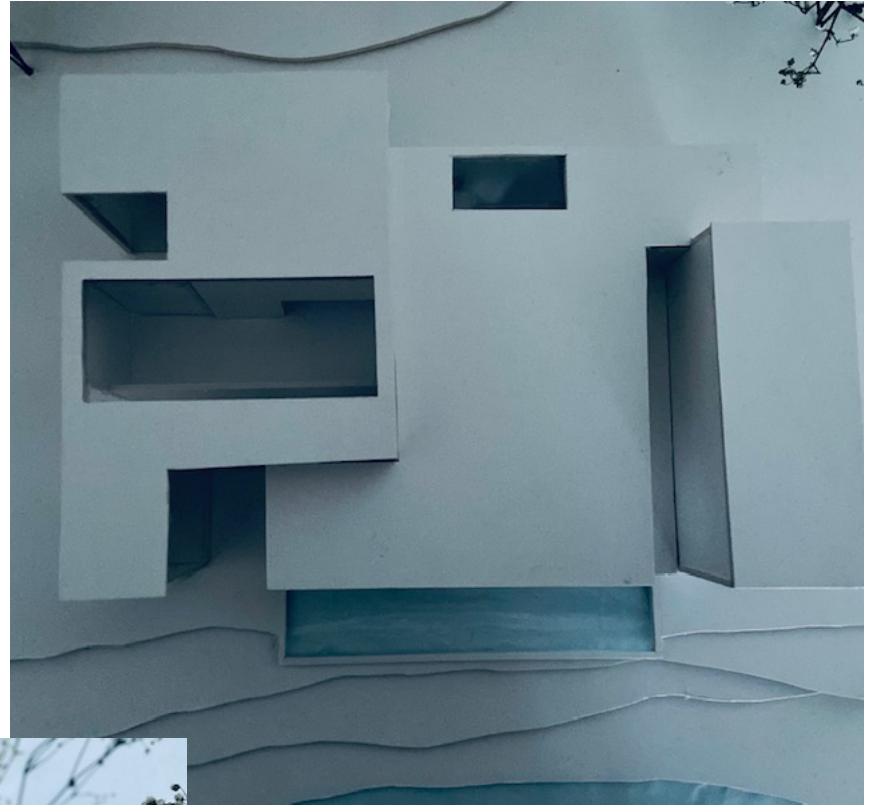
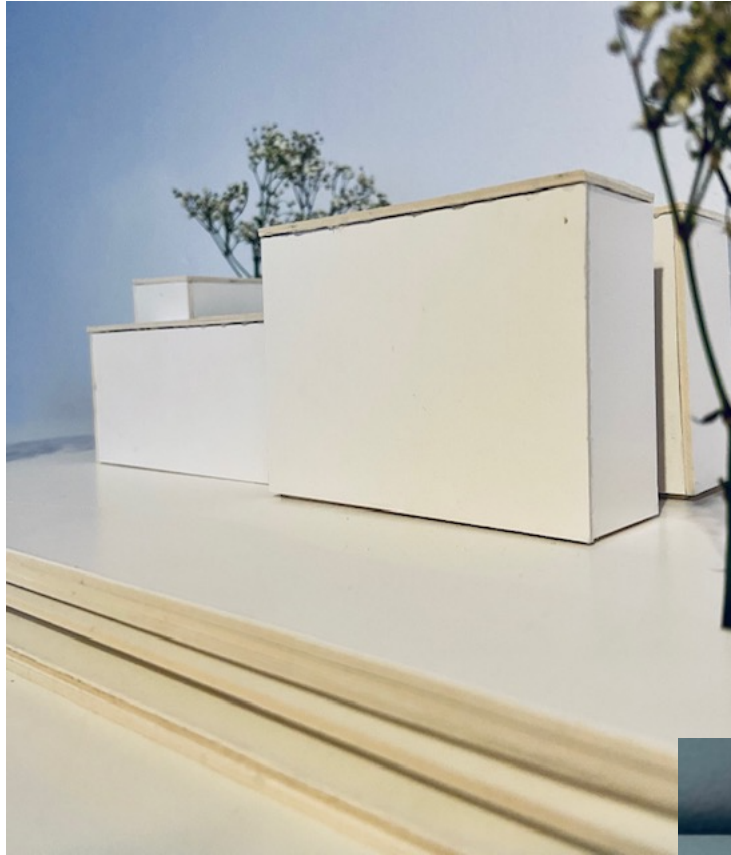


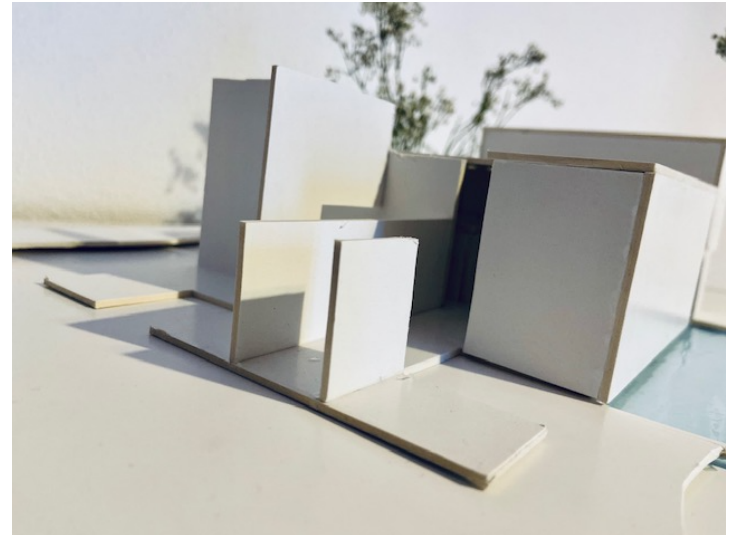
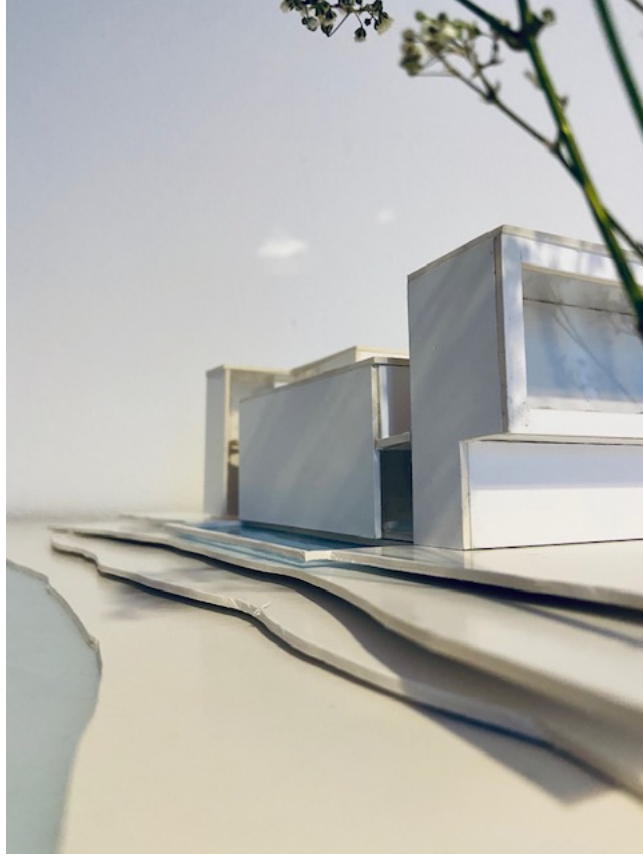
QUERSCHNITT
1:40



LÄNGSSCHNITT
1:40







BADEHAUS

Laura Sturm
DEM1 LN2

