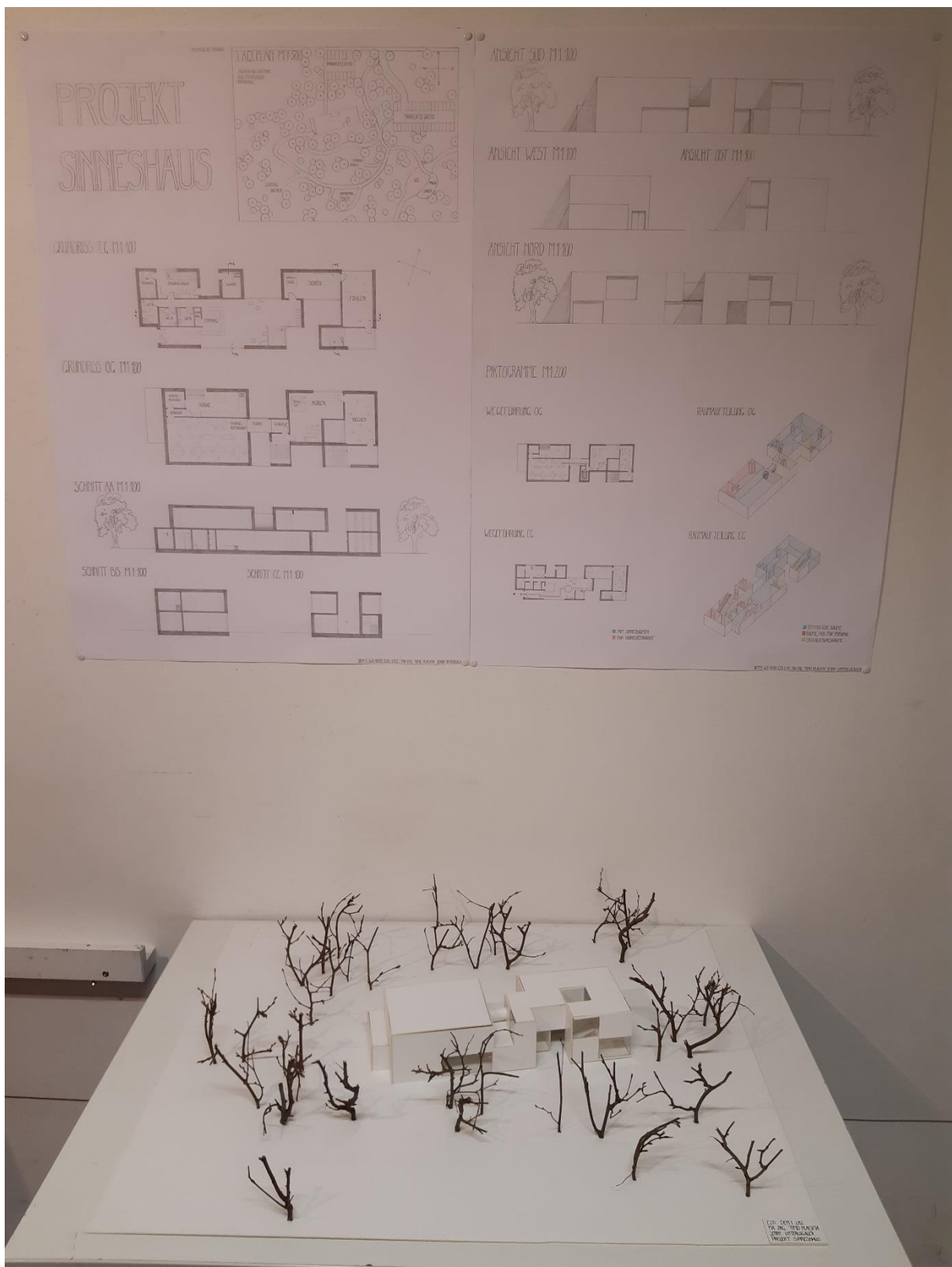


# Komplette Präsentation „Projekt Sinneshaus“



DEM1 WS 19/20 E2D, MA. ENG. Timo Plachta, Jenny Unterlugauer

Das Modell



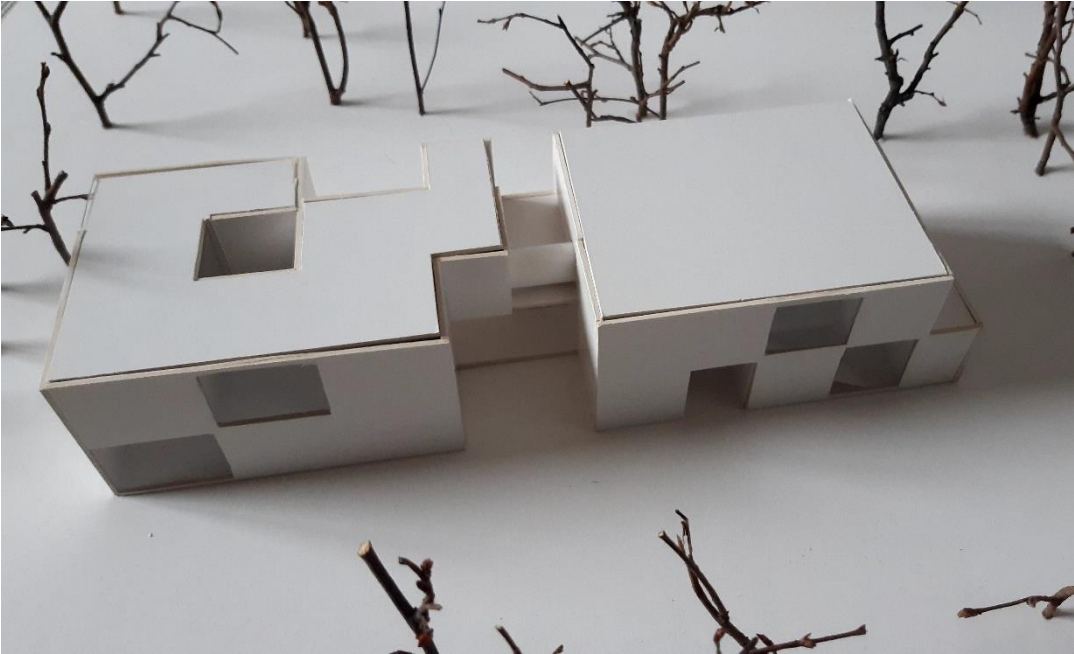
Südseite



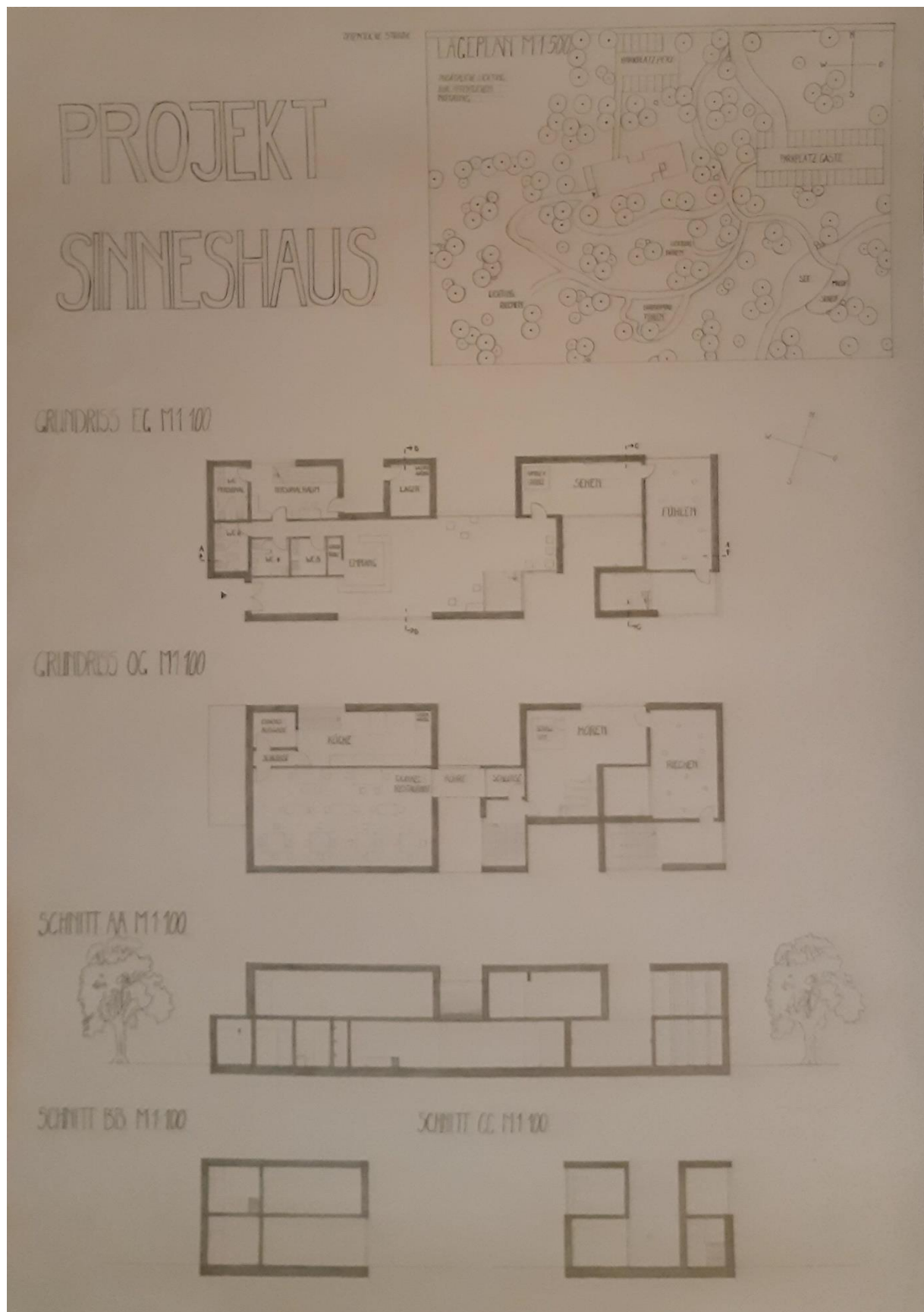
Westseite



Nordseite

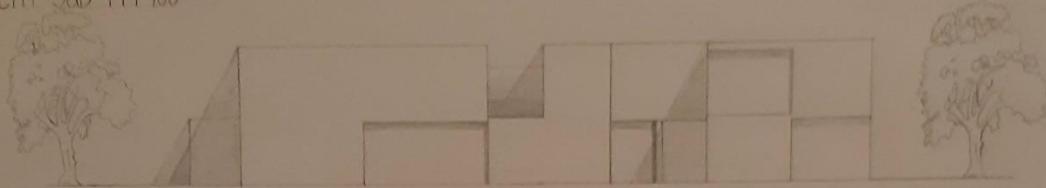


# Plakat 1

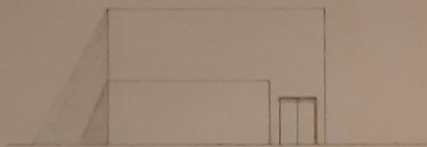


# Plakat 2

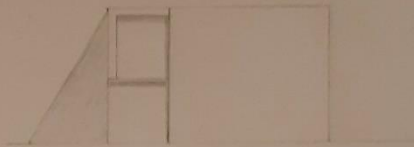
ANSICHT SUD M1:100



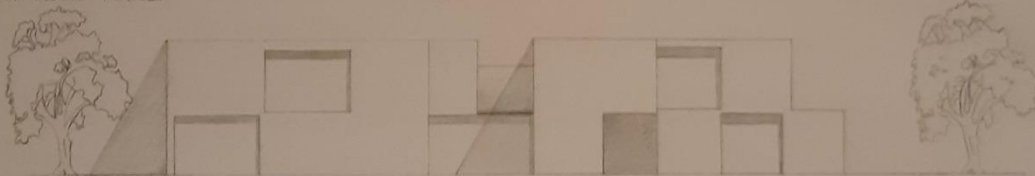
ANSICHT WEST M1:100



ANSICHT OST M1:100

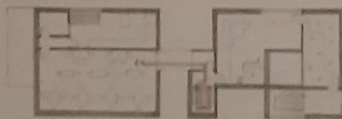


ANSICHT NORD M1:100

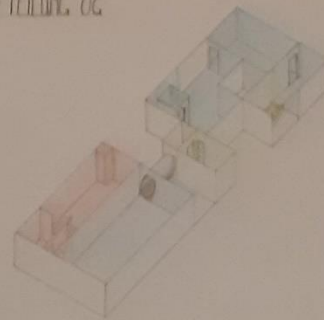


PIKTOGRAMME M1:200

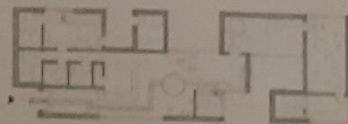
WEGEFÜHRUNG OG



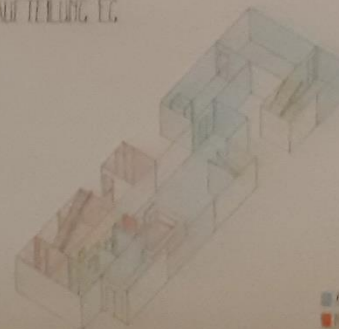
RAUMAUFTAILUNG OG



WEGEFÜHRUNG EG



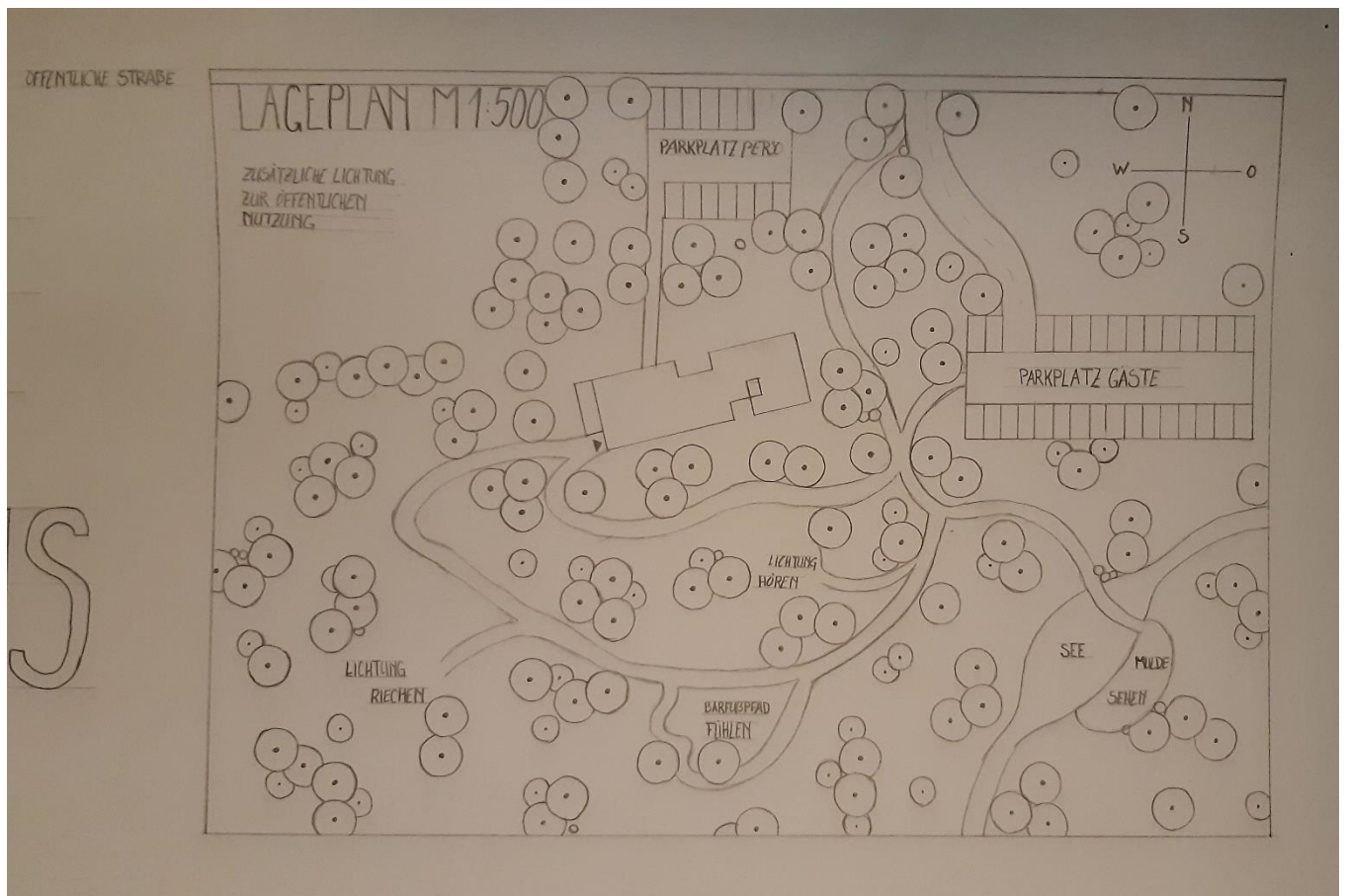
RAUMAUFTAILUNG EG



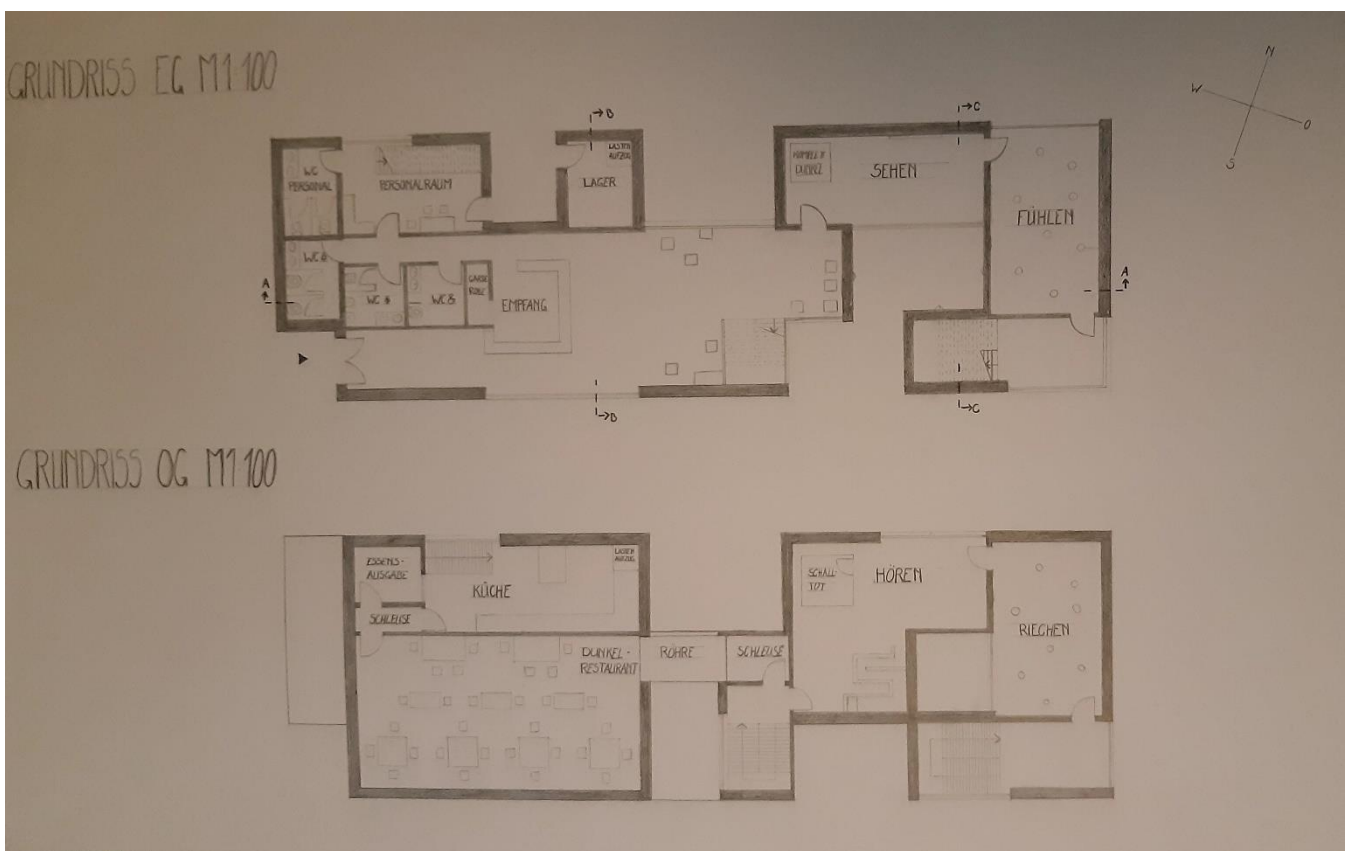
■ MIT SCHWELLEN  
■ FÜR DURCHGANG

■ KÖSTLICHE RAUM  
■ RAUM FÜR TISCH  
■ ERSCHEINUNG

# Lageplan M 1:500

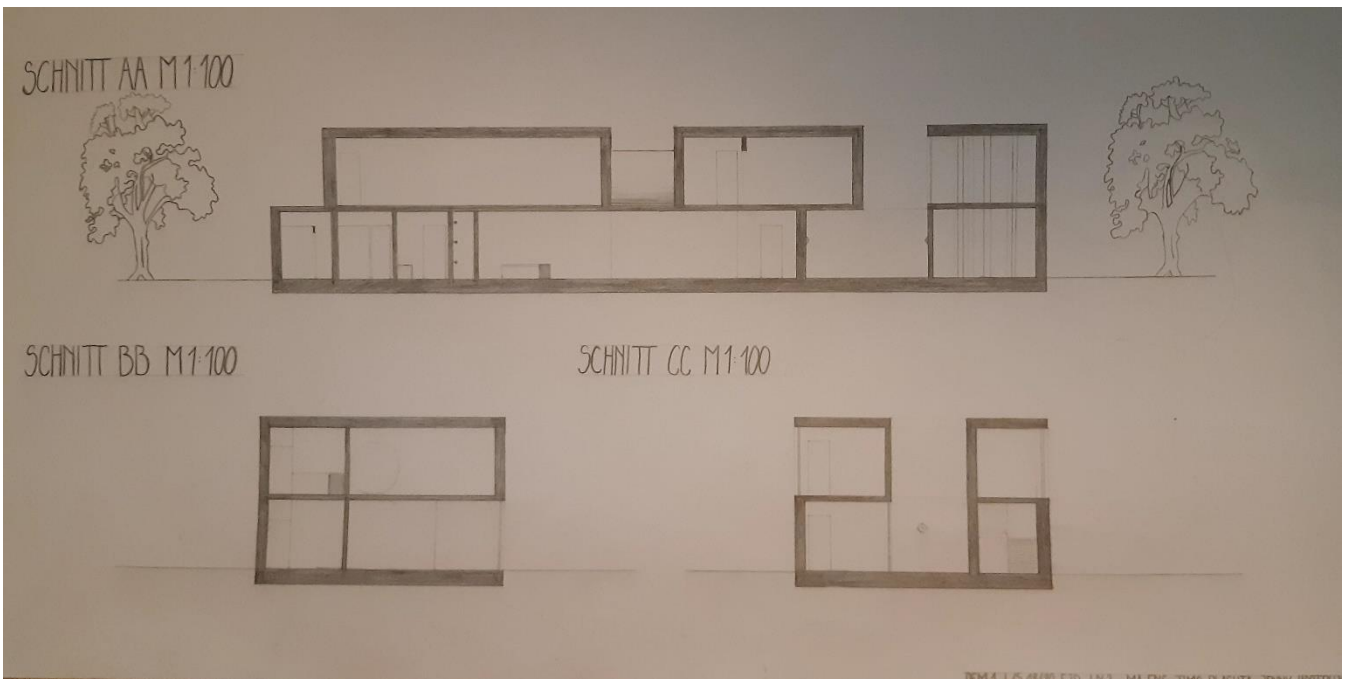


# Grundrisse M 1:100

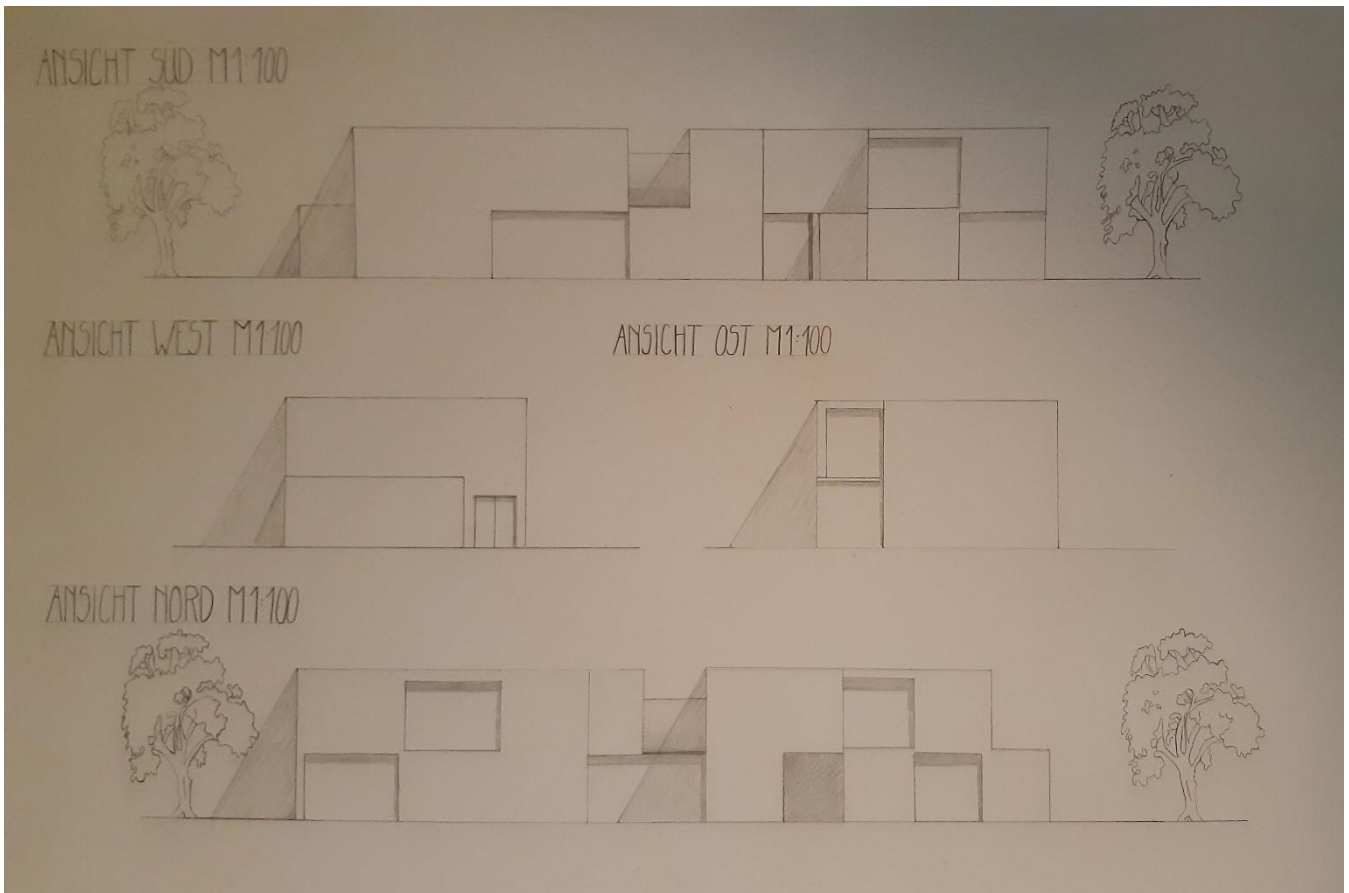




# Schnitte M 1:100



# Ansichten M 1:100



# Piktogramme M 1:200

