

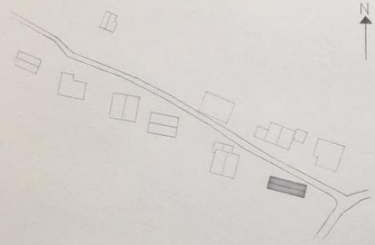
HAUS FÜR JULIA & BJÖRN

Innauer Matt Architekten

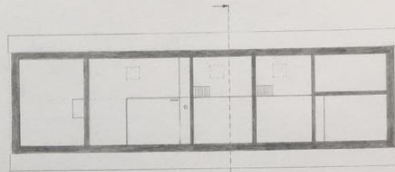
Zeichnungen

HAUS FÜR JULIA & BJÖRN

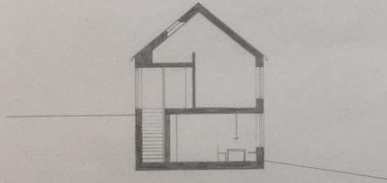
IN EGG/VORALBERG
INNAUER MATT ARCHITEKTEN
2012-2013



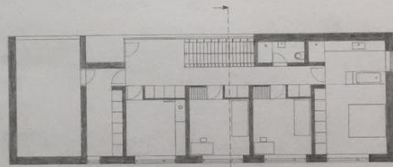
LAGEPLAN, 1:1000



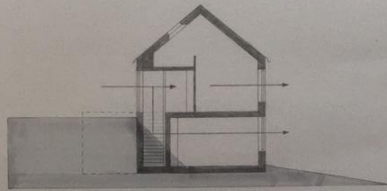
DACHGESCHOSS, 1:100



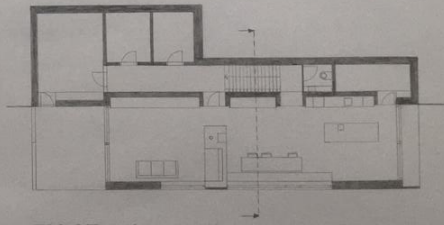
SCHNITT, 1:100



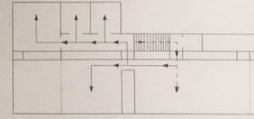
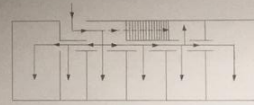
OBERGESCHOSS, 1:100



ANPASSUNG LANDSCHAFT, 1:100

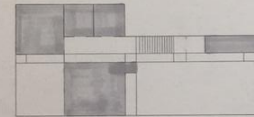
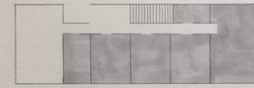


ERDGESCHOSS, 1:100



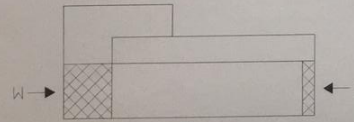
WEGEFÜHRUNG, 1:150

— PRIVAT
--- ÖFFENTLICH

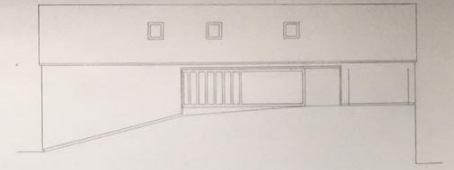


RAUMAUFTeilUNG, 1:150

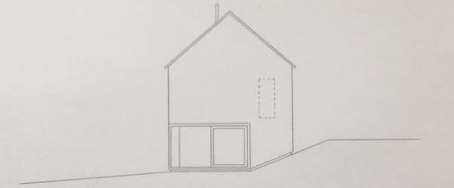
■ PRIVAT
□ ÖFFENTLICH



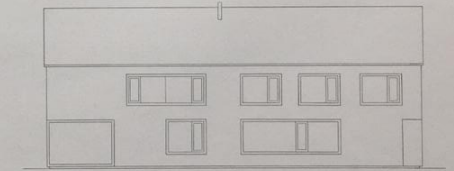
LICHTENFALL, 1:150



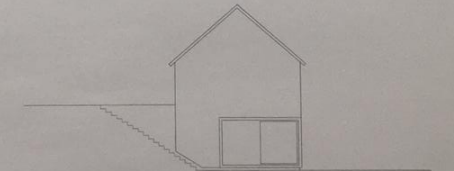
ANSICHT NORD, 1:100



ANSICHT OST, 1:100

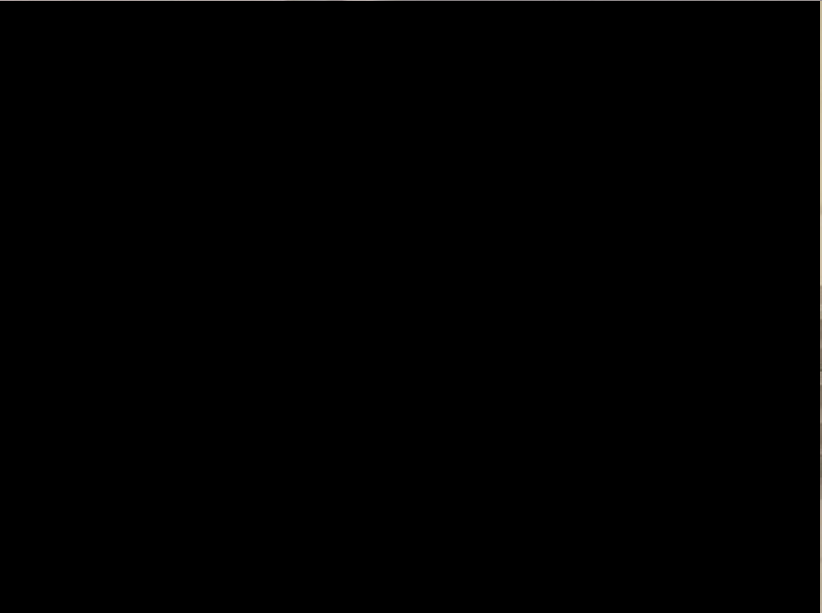
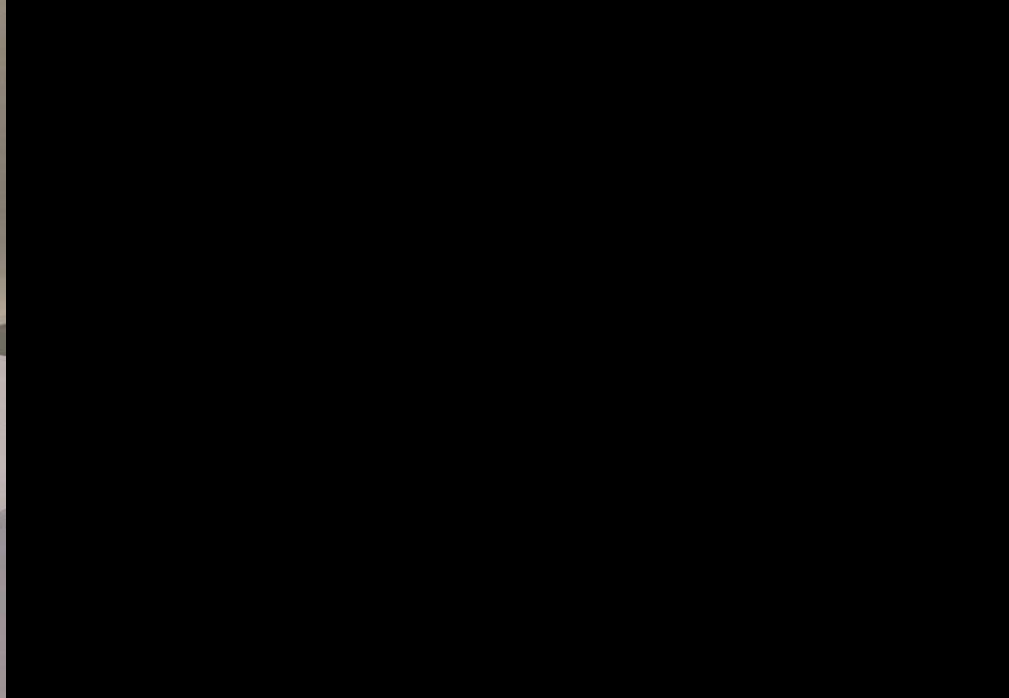
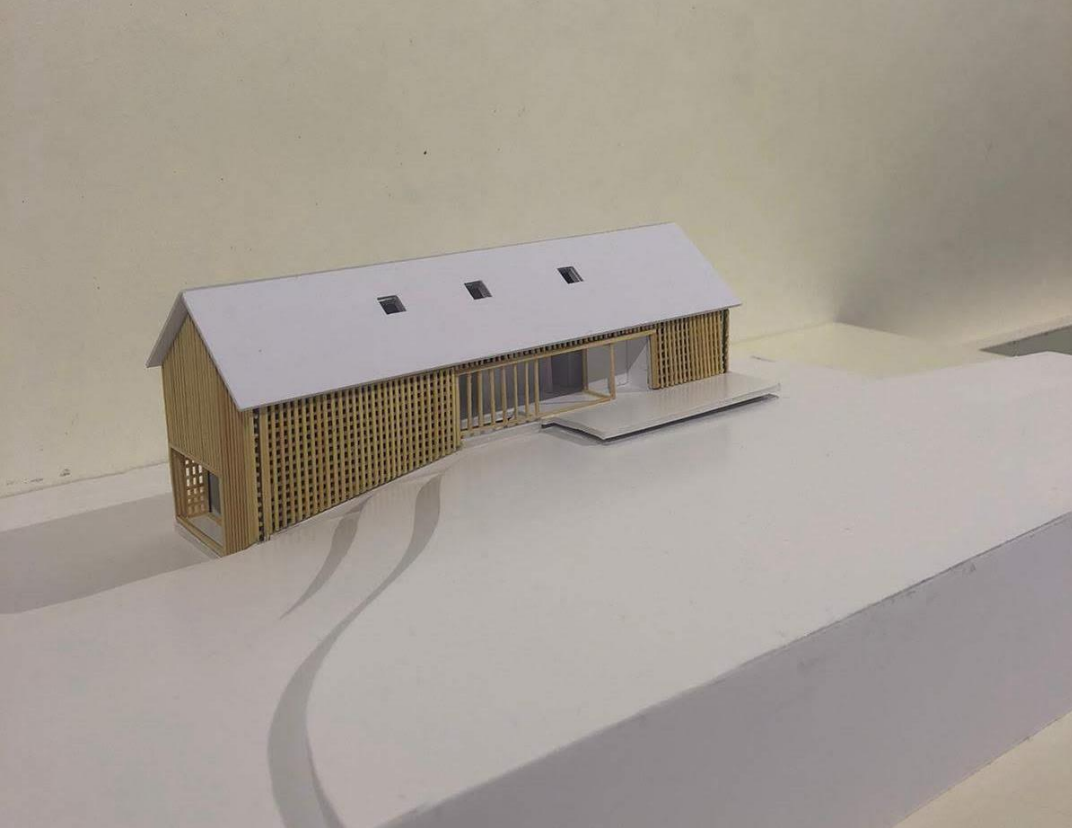


ANSICHT SÜD, 1:100

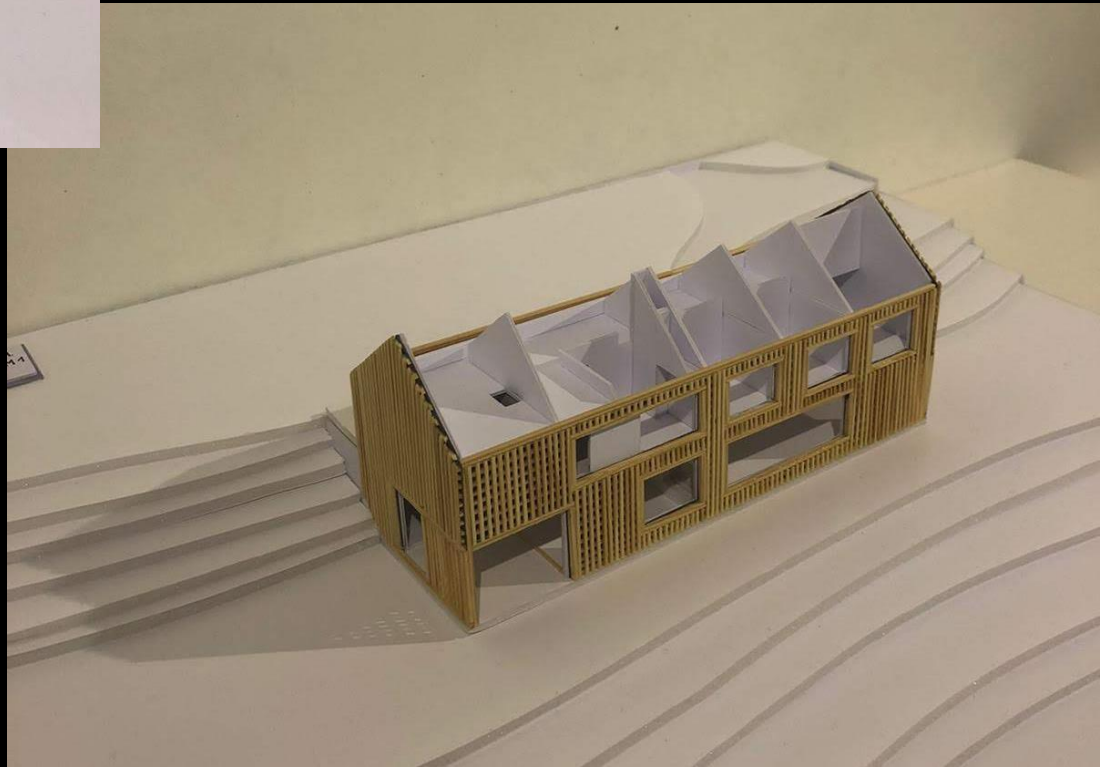
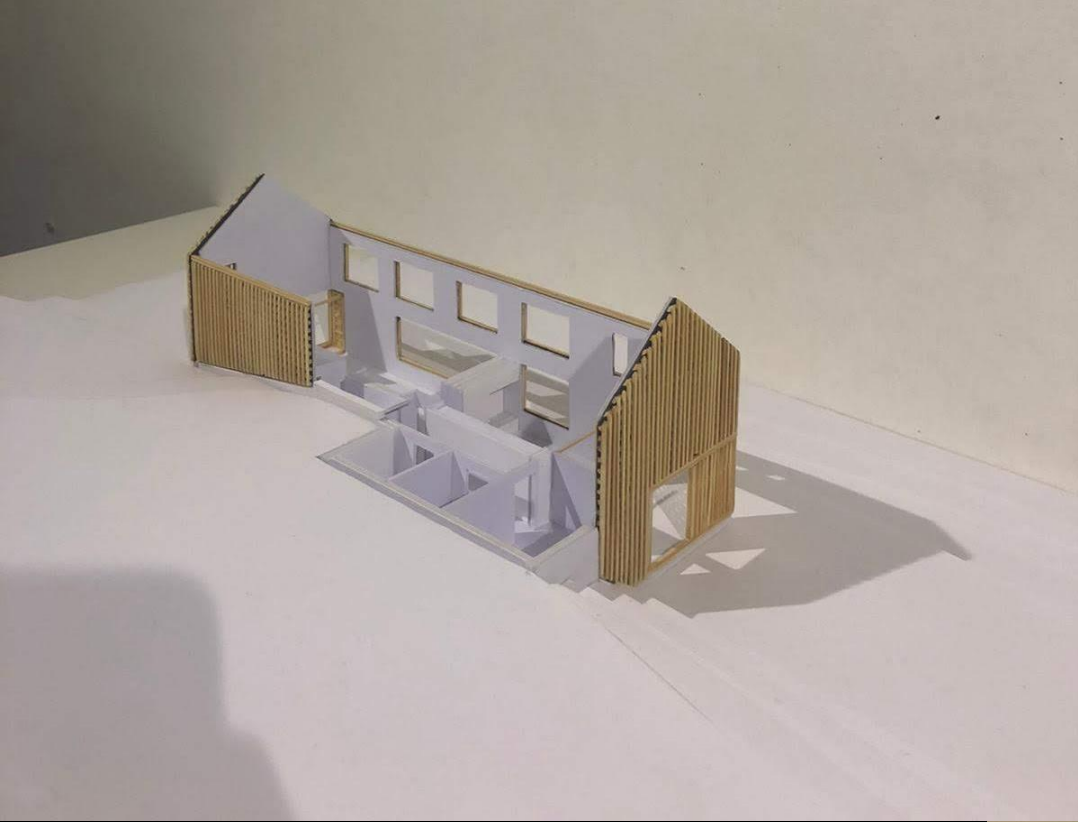


ANSICHT WEST, 1:100

Modell







Herz, Lucia
Höck, Michael
Energieeffizientes Planen und Bauen, 1. Fachsemester

Quellen:
<http://www.innauer-matt.com/projekt/haus-fuer-julia-und-bjoern>