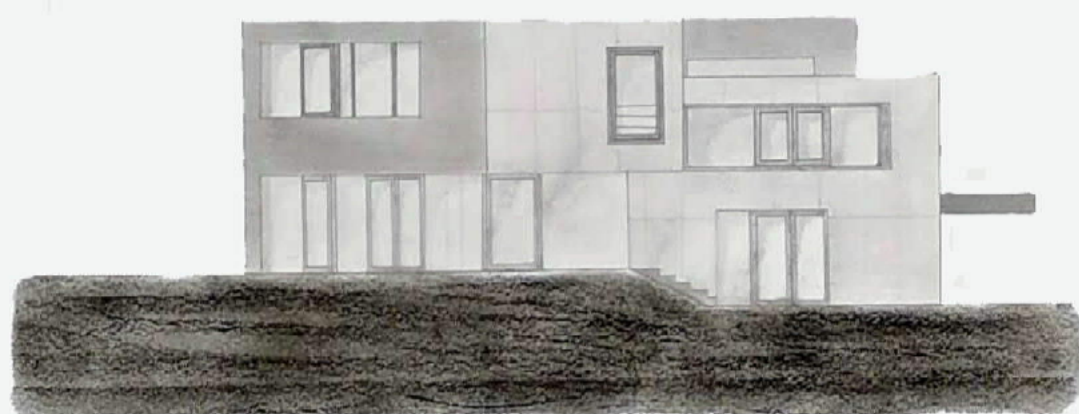
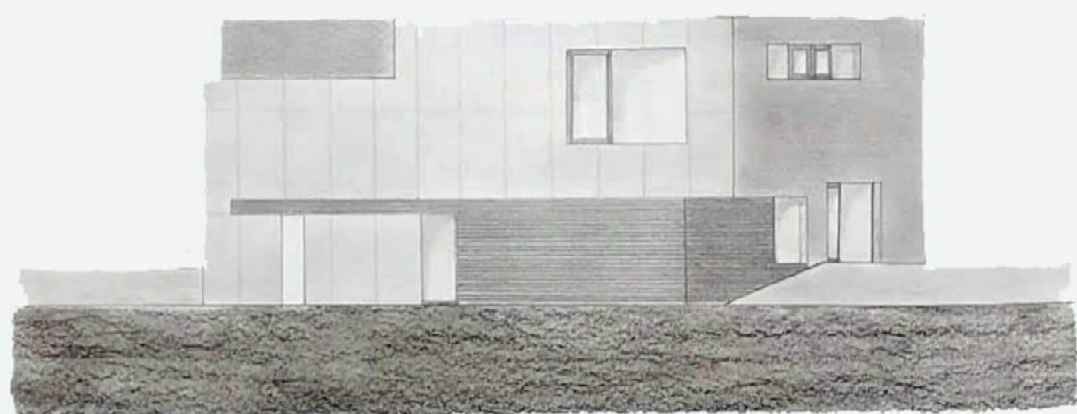


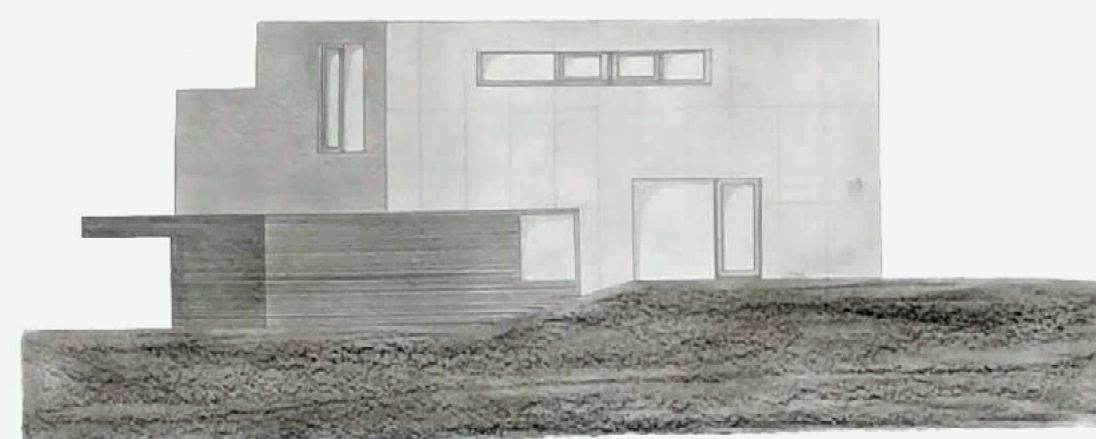
# HAUS IN BELGIEN HASA-ARCHITECTEN



West Süd



North West

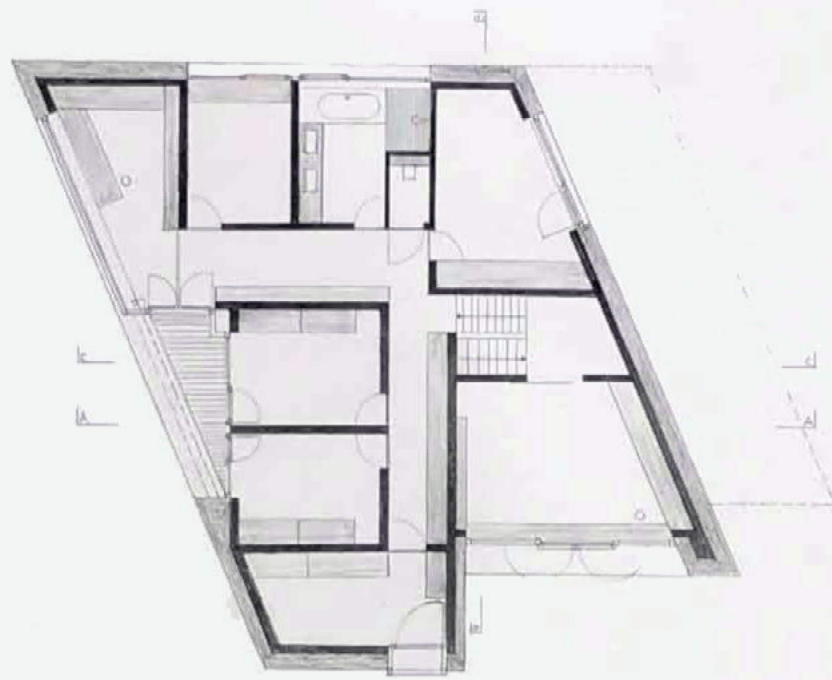


South North

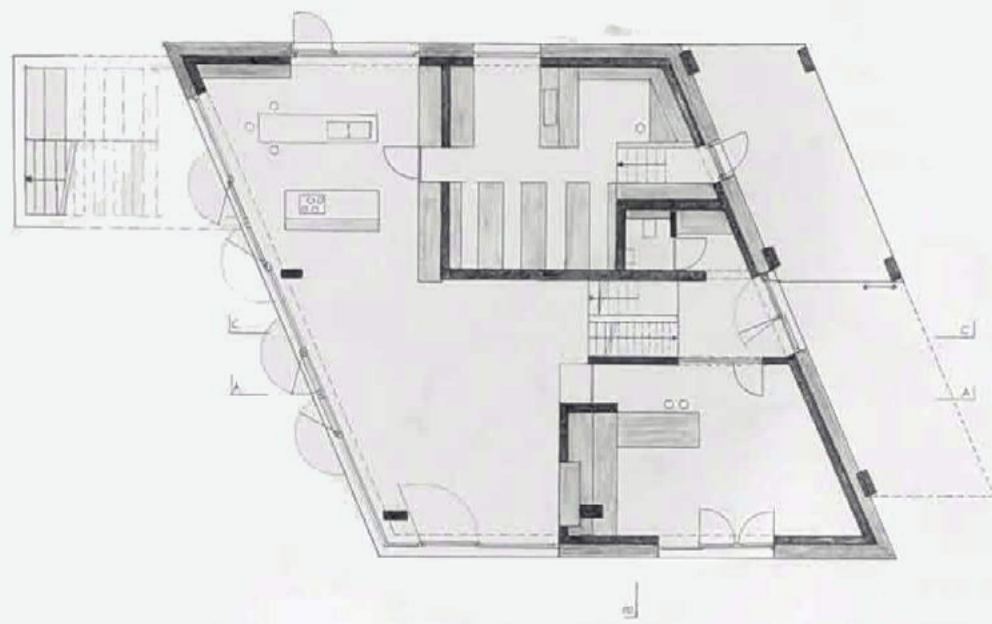


Lageplan M1:1000

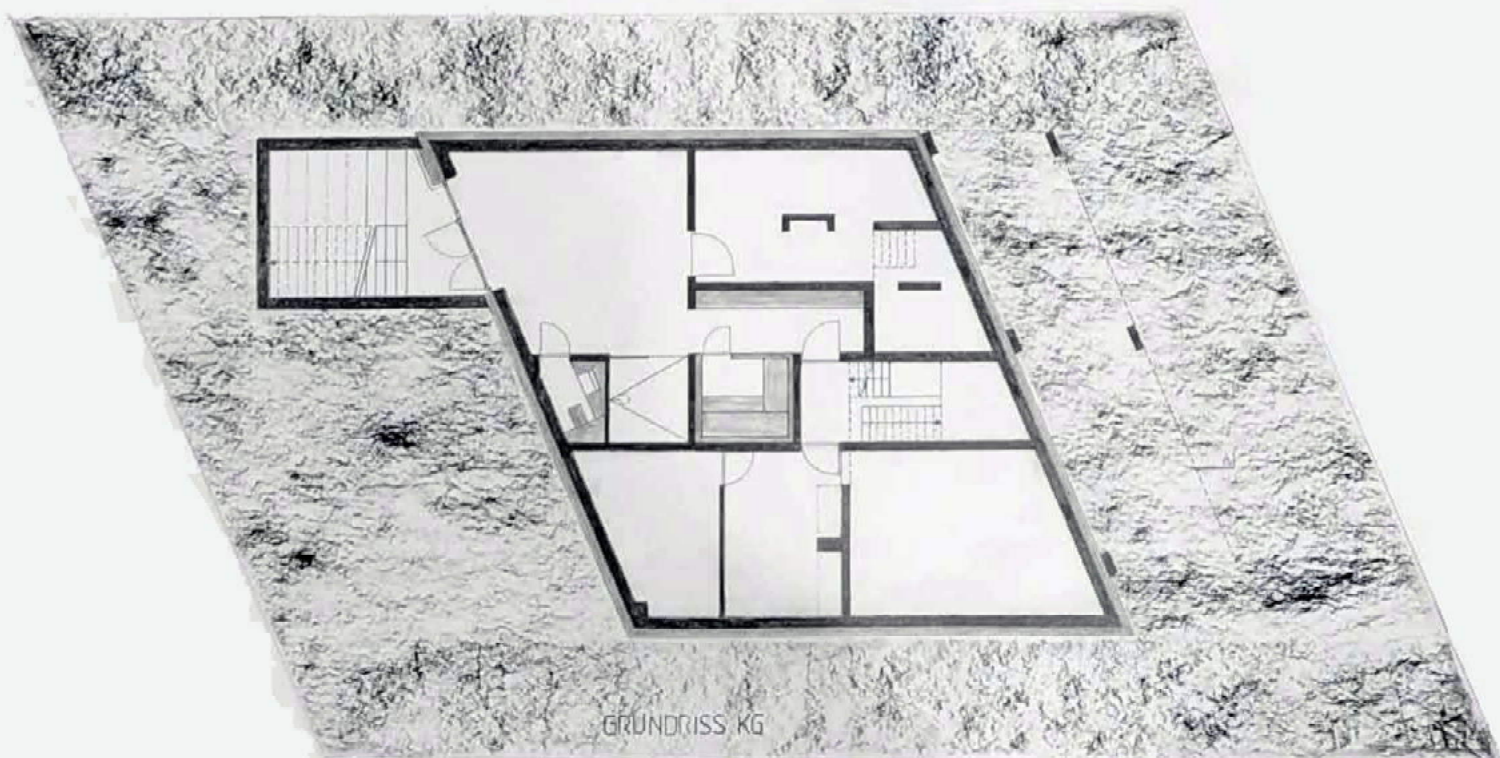
Burthagesstraat 19, Dudd Heverlee



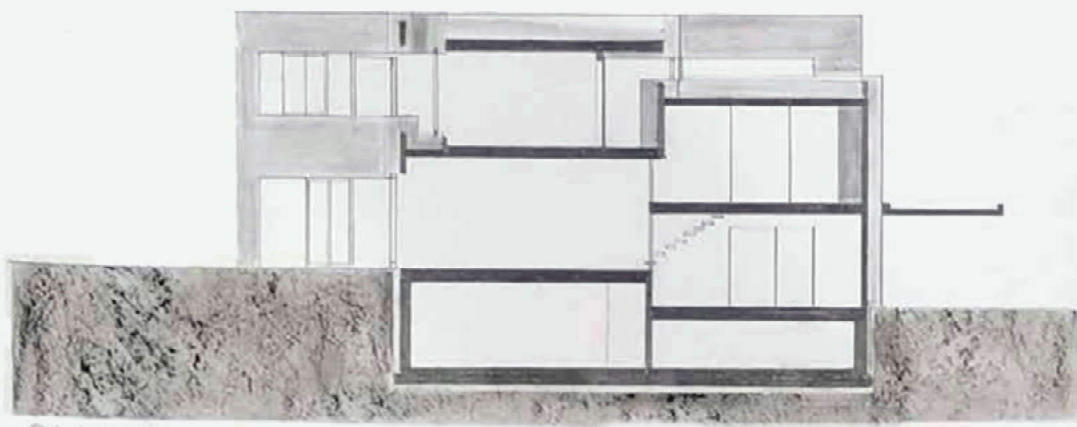
GRUNDRISS OG



GRUNDRISS EG

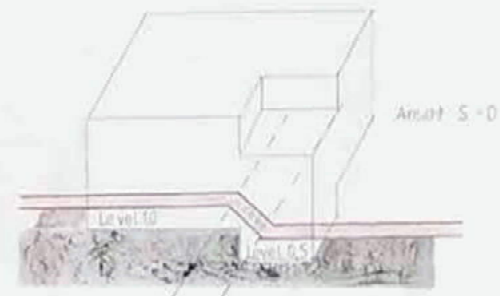


GRUNDRISS KG

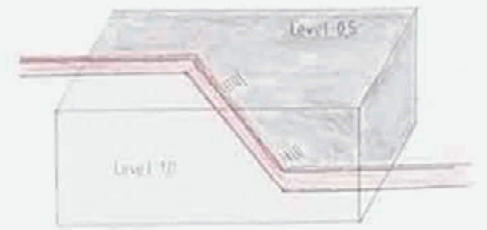


Schnitt A-A

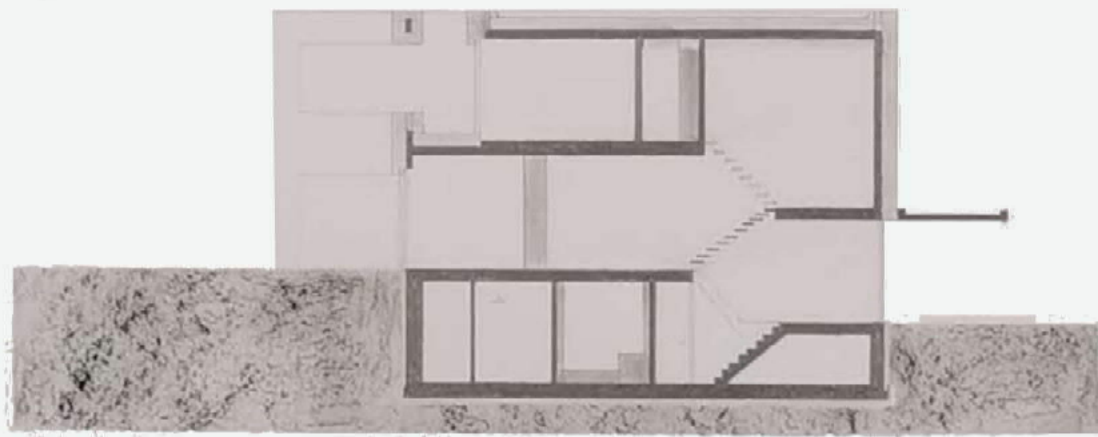
Split-Level + Ebenenversatz



Ansicht S-O

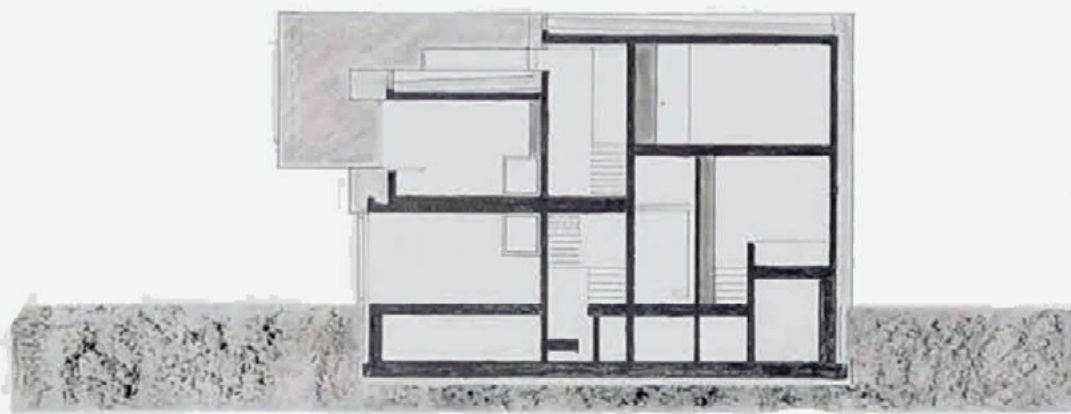
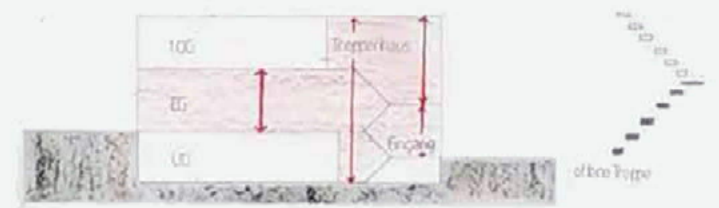


Ansicht S-W



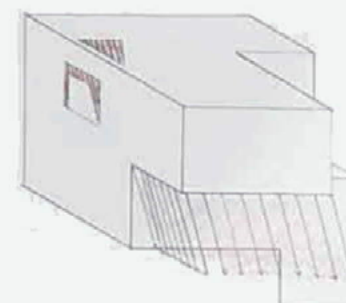
Schnitt C-C

Lichtführung im EG, Eingang/Treppenhaus

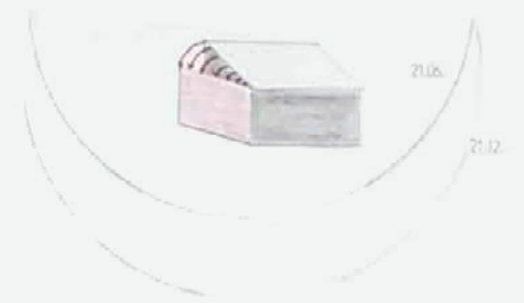


Schnitt 3-3

Gebäudehöhen  
Verschattungsflächen



Sonnenverlauf  
Sonnenfläche



Baukörpertransformationen



