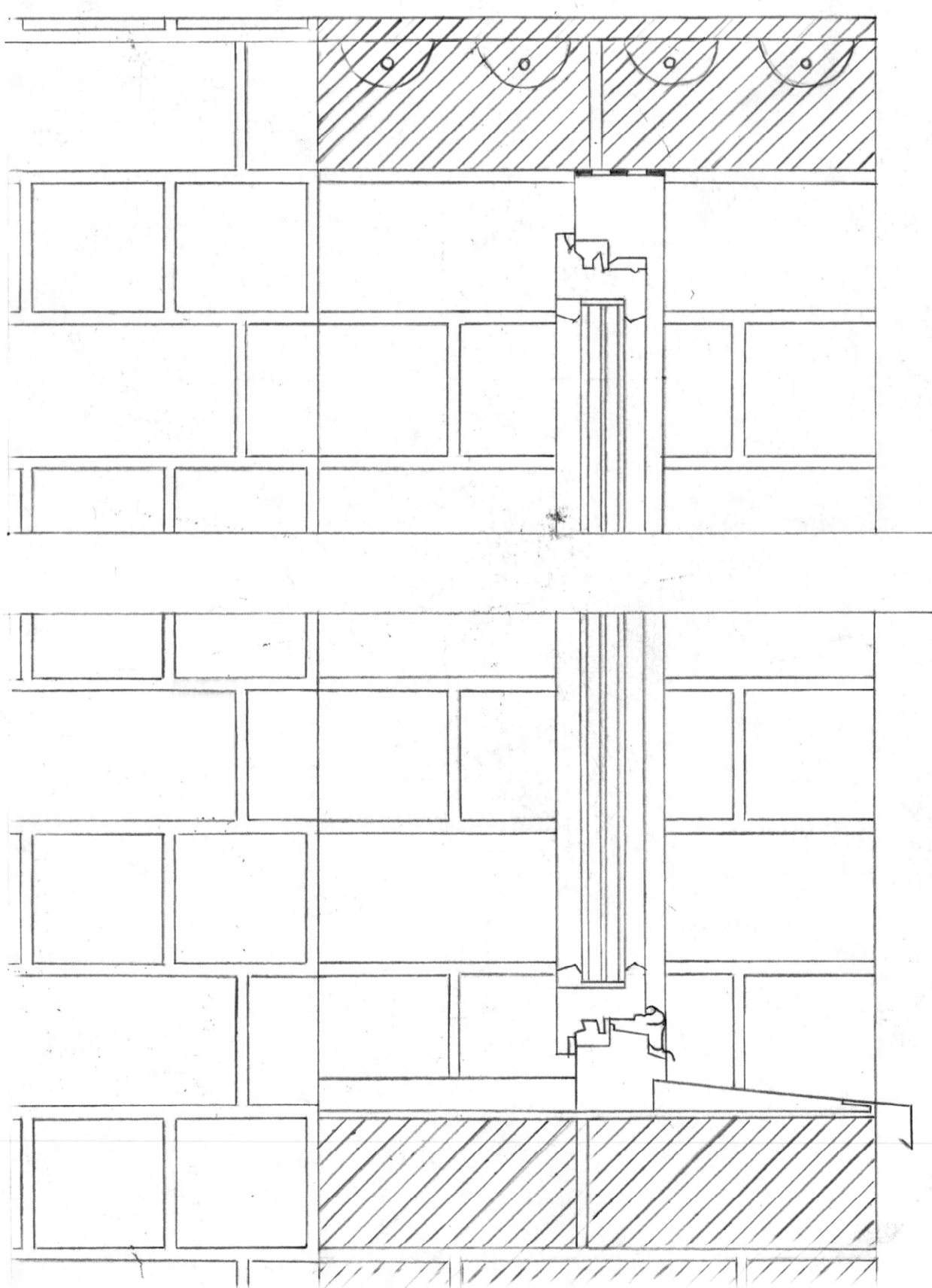
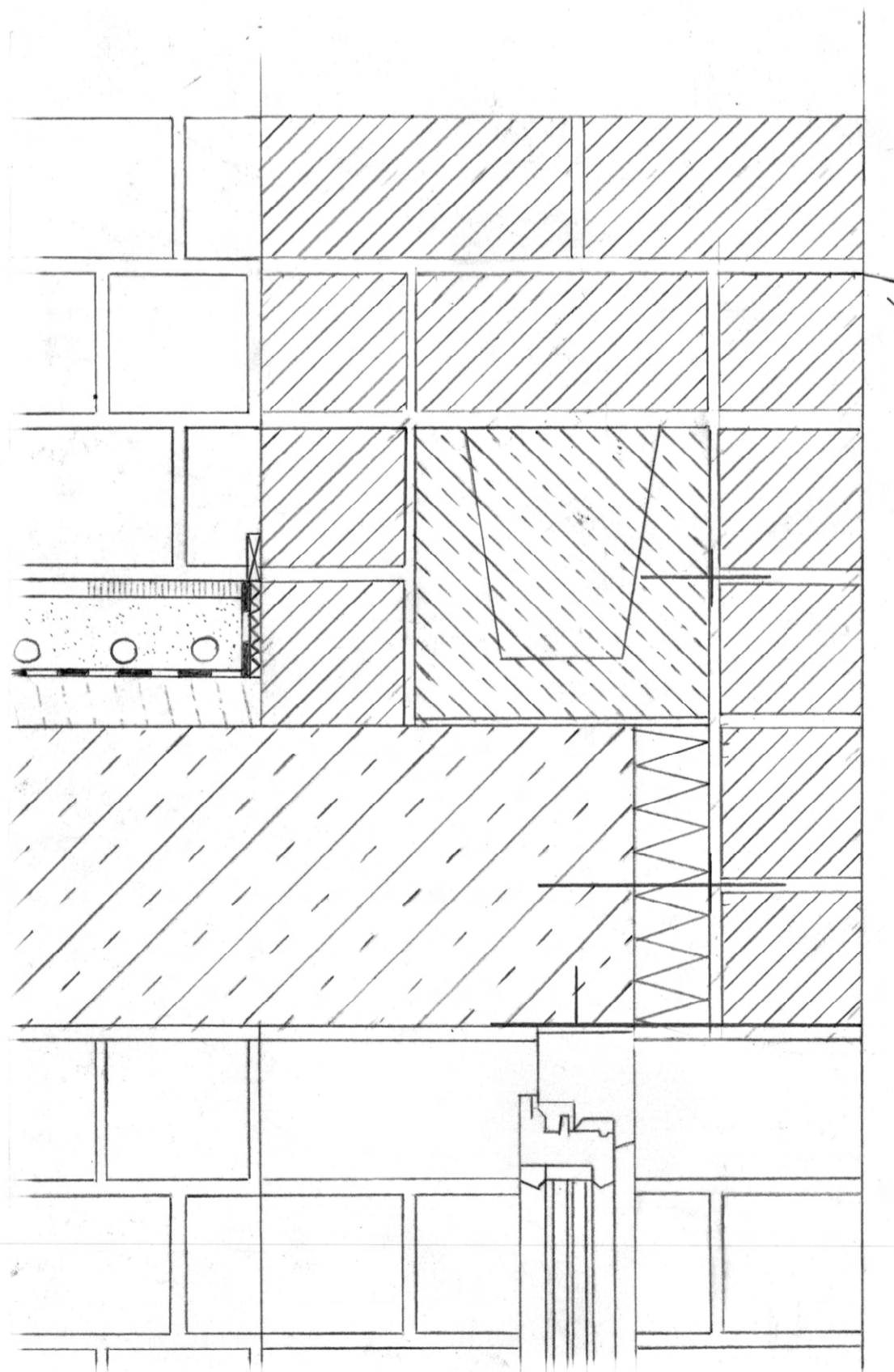


SCHNITT S1 M 1:50



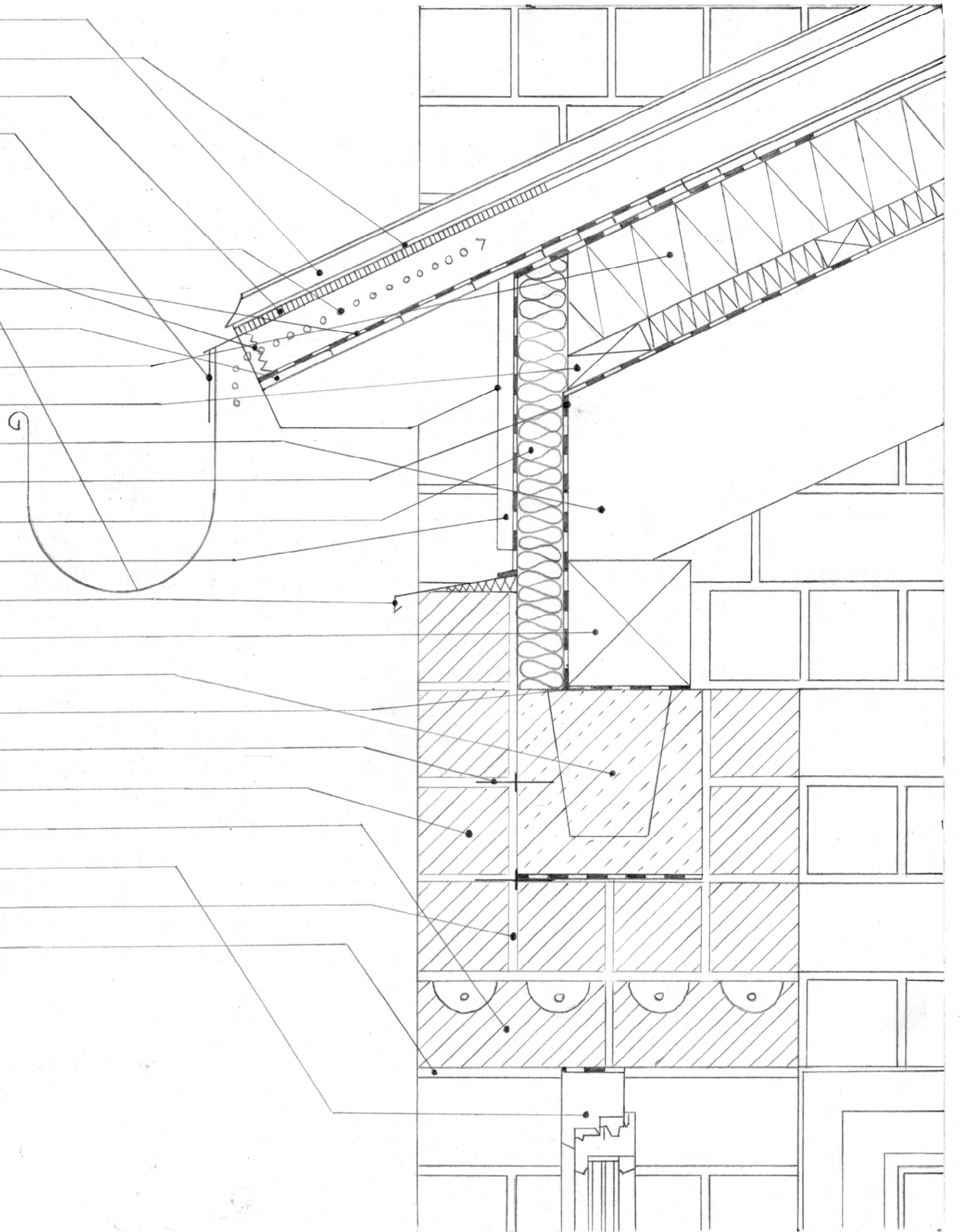
FENSTER DETAIL M 1:5



DECKENANSCHLUSS DETAIL M 1:5

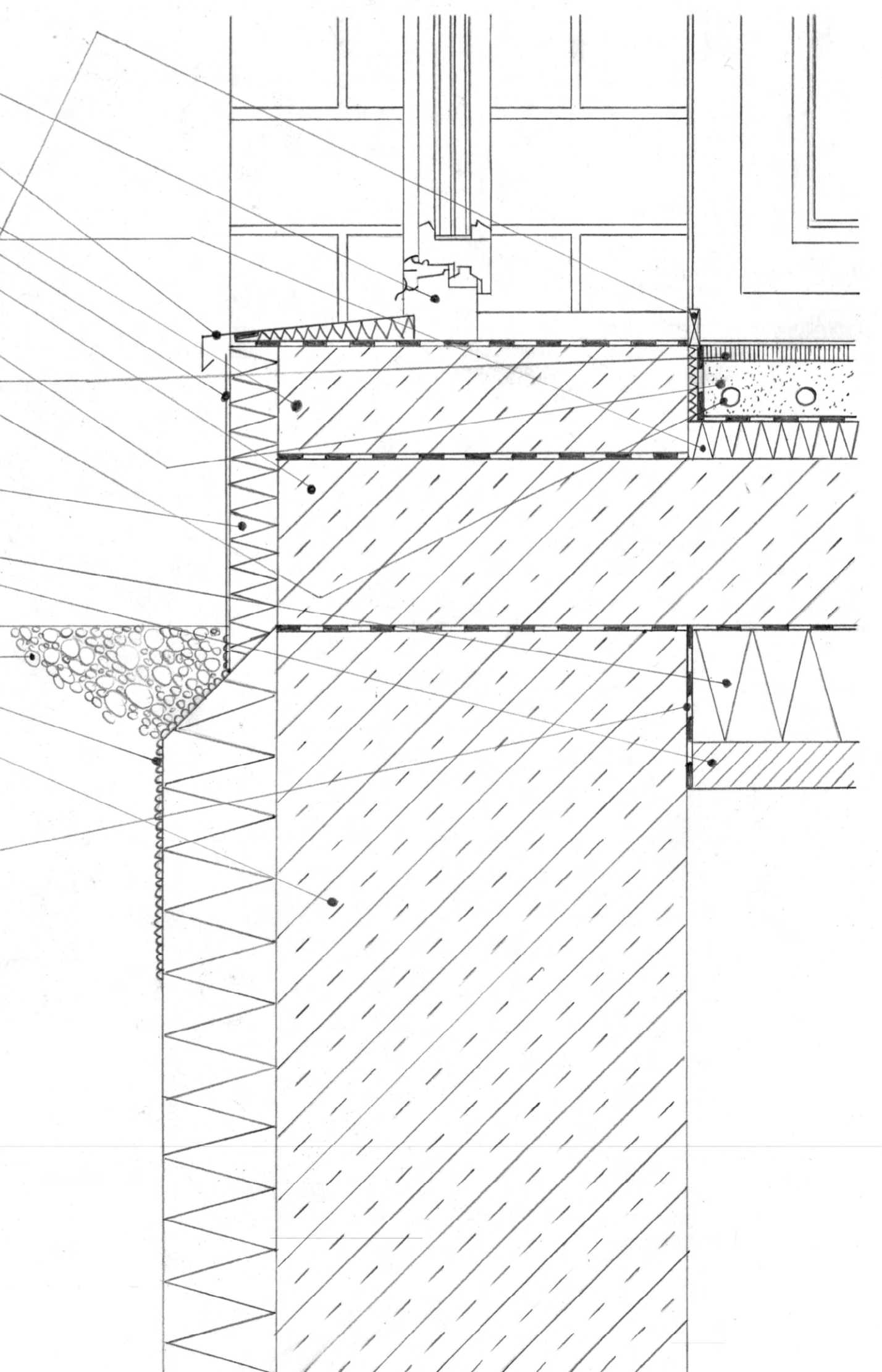
- STEHPALZ-BLECH, 30MM
- ANTI-DRÖHN-MATTE, 20MM
- OSB-PLATTE (UK FÜR BLECH), 12,5MM
- ABTROPFBLECH
- REGENRINNE
- INSEKTENSCHUTZGITTER
- HINTERLÜFTUNG, 60MM
- UNTERSPEANNBahn (= 2. WASSERFÜHRENDE SCHICHT)
- HOLZVERKLEIDUNG, UNTERSEITIG, 10MM
- HOLZFASERDÄMMLATTE, 120MM
- UNTERKONSTRUKTION / KONTERLÄTTUNG 40x60MM
- SPARREN 14x24CM
- DAMPFBREMSE
- HOLZFASERDÄMMUNG, 60MM
- HOLZVERKLEIDUNG, 20MM
- BLECH
- FUSSFETTE 16x16CM
- RINGANKER, STAHLBEITON, 24x24CM
- DACHPAPPE
- MAUERWERKSANKER
- ZIEGEL, 2 DF, 24x11,5x11,3
- ZIEGELSTURZ
- FENSTER, HOLZRAHMEN, 3-FACH VERGLASUNG
- STOSFUGE, 1MM
- SETZFUGE, 1,2MM

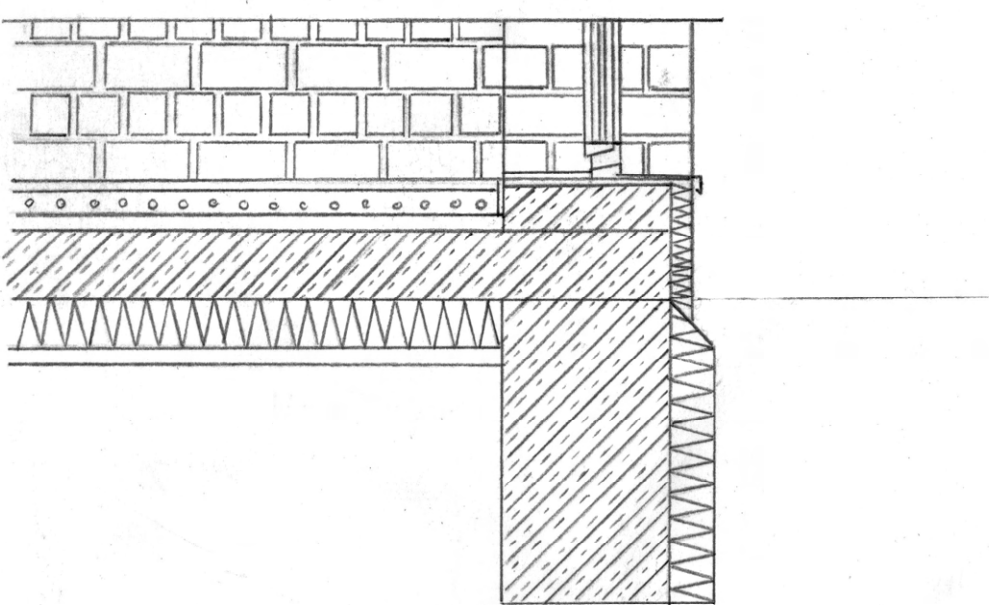
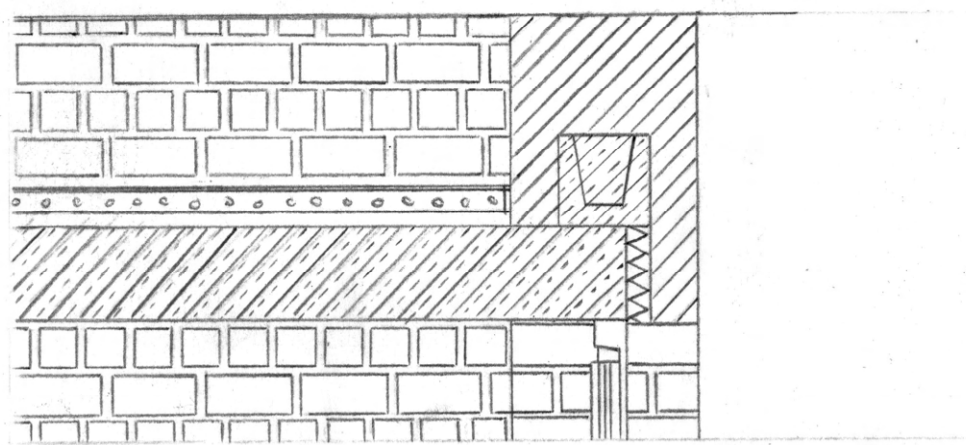
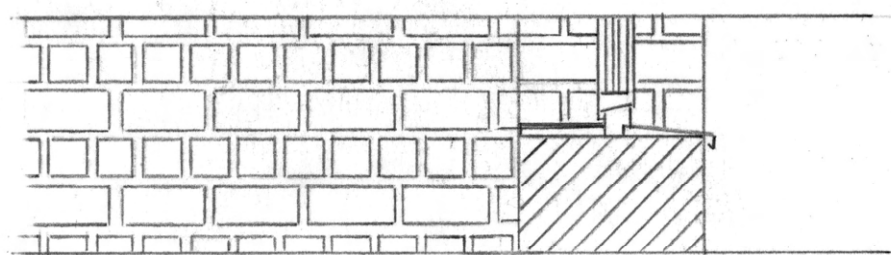
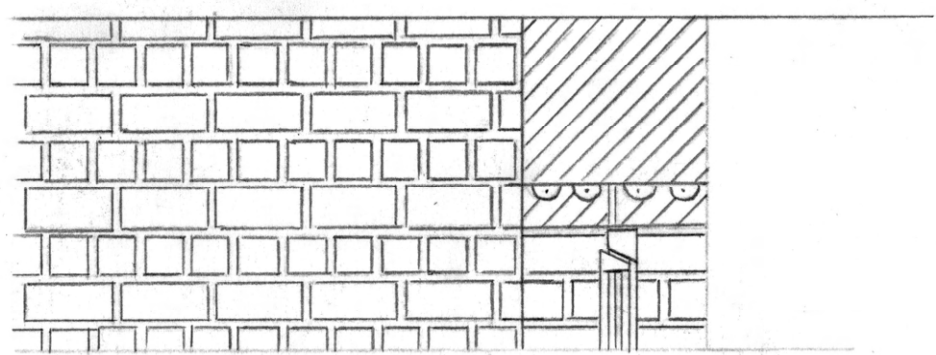
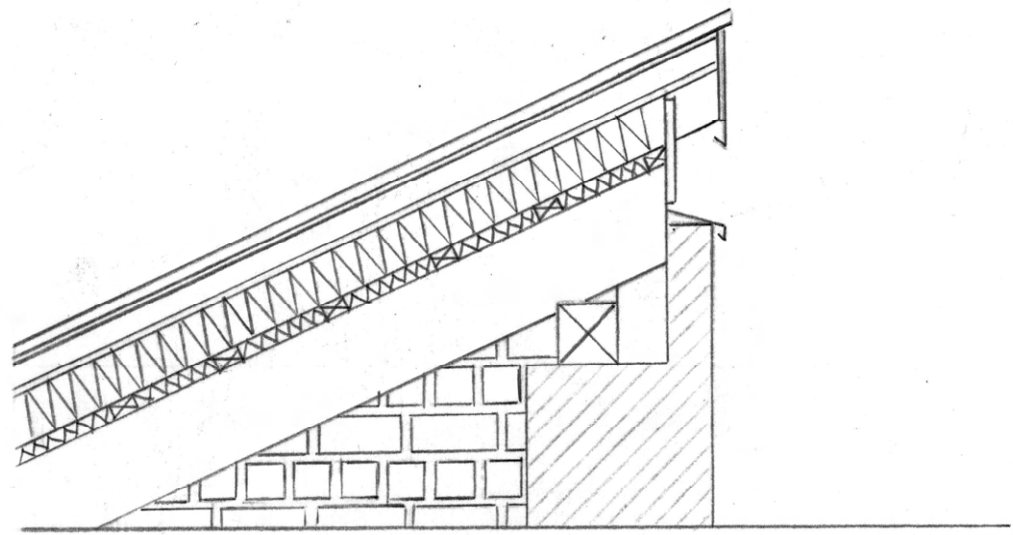
TRAUFE DETAIL M 1:5



- FENSTER, HOLZRAHMEN, 3-FACH VERGLASUNG
- FENSTERBLECH
- SOCKEL AUFRANTUNG, 100MM
- SOCKELBLECH
- BODENPLATTE, 200MM
- TRITTSCHALLDÄMMUNG, KORK, 30MM
- ESTRICH, 50MM
- FUSSBODENHEIZUNG
- FLOCHKANTLÄMMELLE, EICHE, 20MM
- SOCKELLEISTE 40MM x 12,5MM
- HAUFFASERFALLE 50MM
- PERIMETERDÄMMUNG 120MM
- SAUBERKEITSSCHICHT 50MM
- FUNDAMENT, TIEFE 80CM
- KIES
- NOPPENBAHN
- TRENNLAGE

SOCKEL DETAIL M 1:5





FASSADENSCHNITT M 1:20