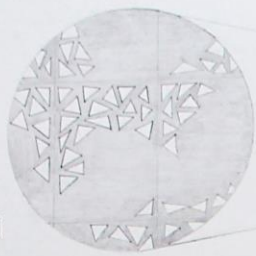


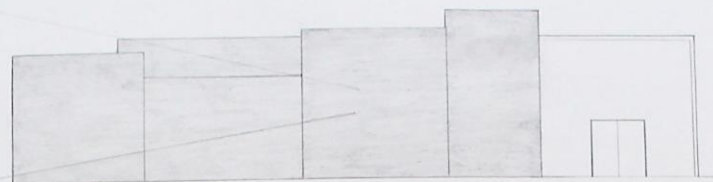


BadeHaus

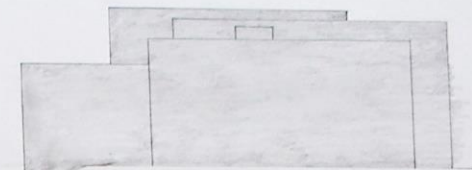
Vera Kohler



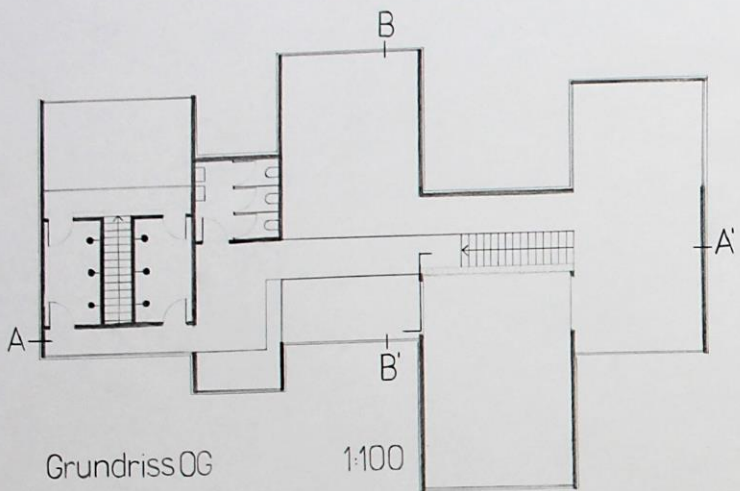
Fassadendetail



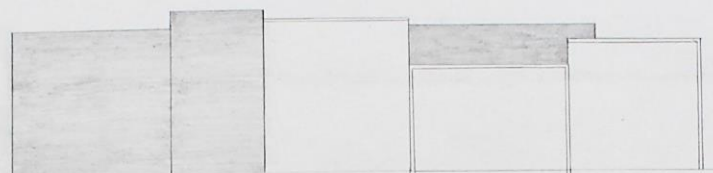
Ansicht Nord 1:100



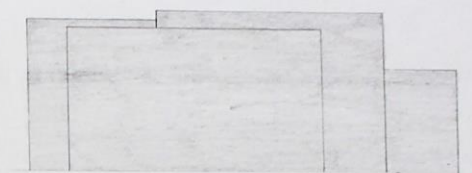
Ansicht Ost 1:100



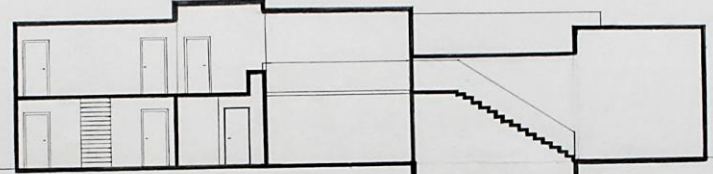
Grundriss OG 1:100



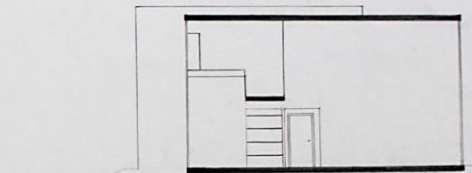
Ansicht Süd 1:100



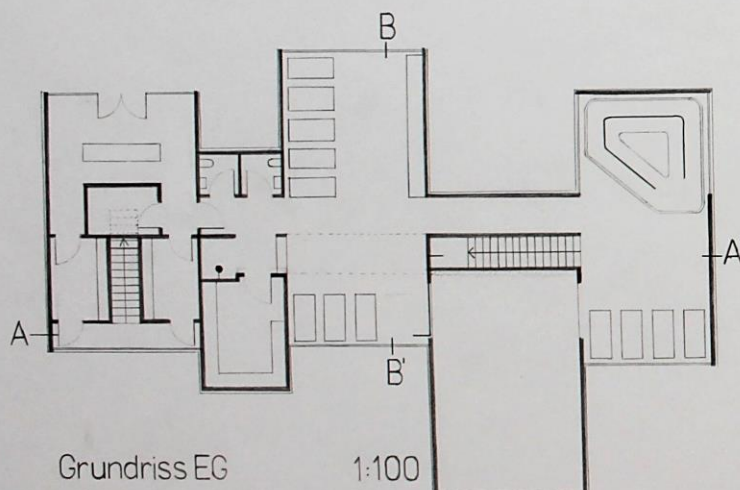
Ansicht West 1:100



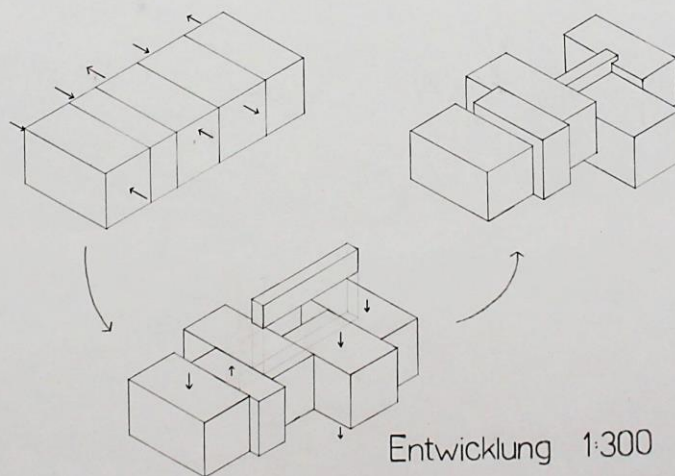
Schnitt AA' 1:100



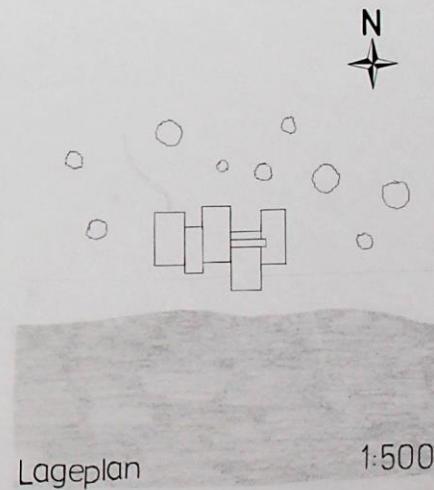
Schnitt BB' 1:100



Grundriss EG 1:100

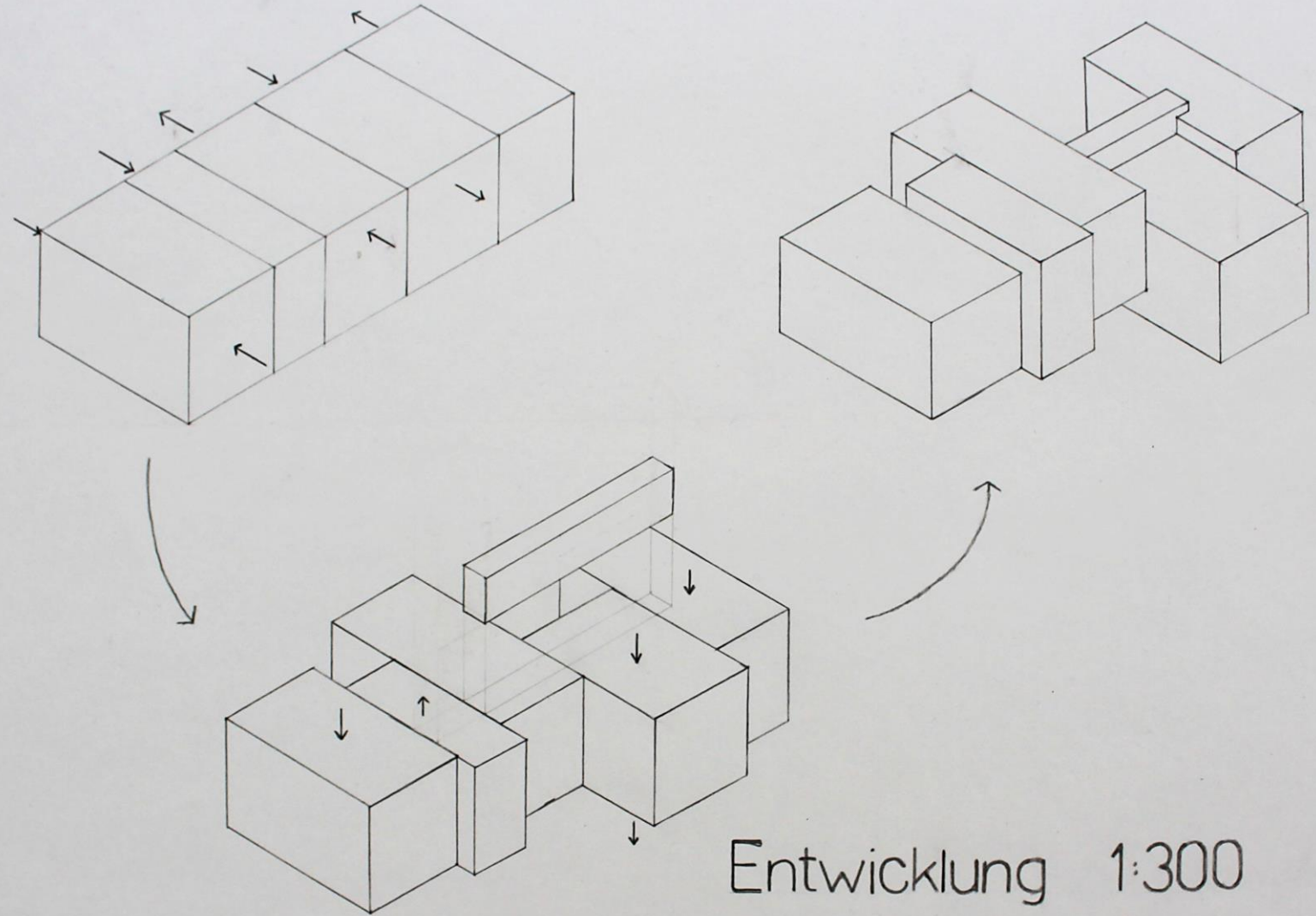


Entwicklung 1:300

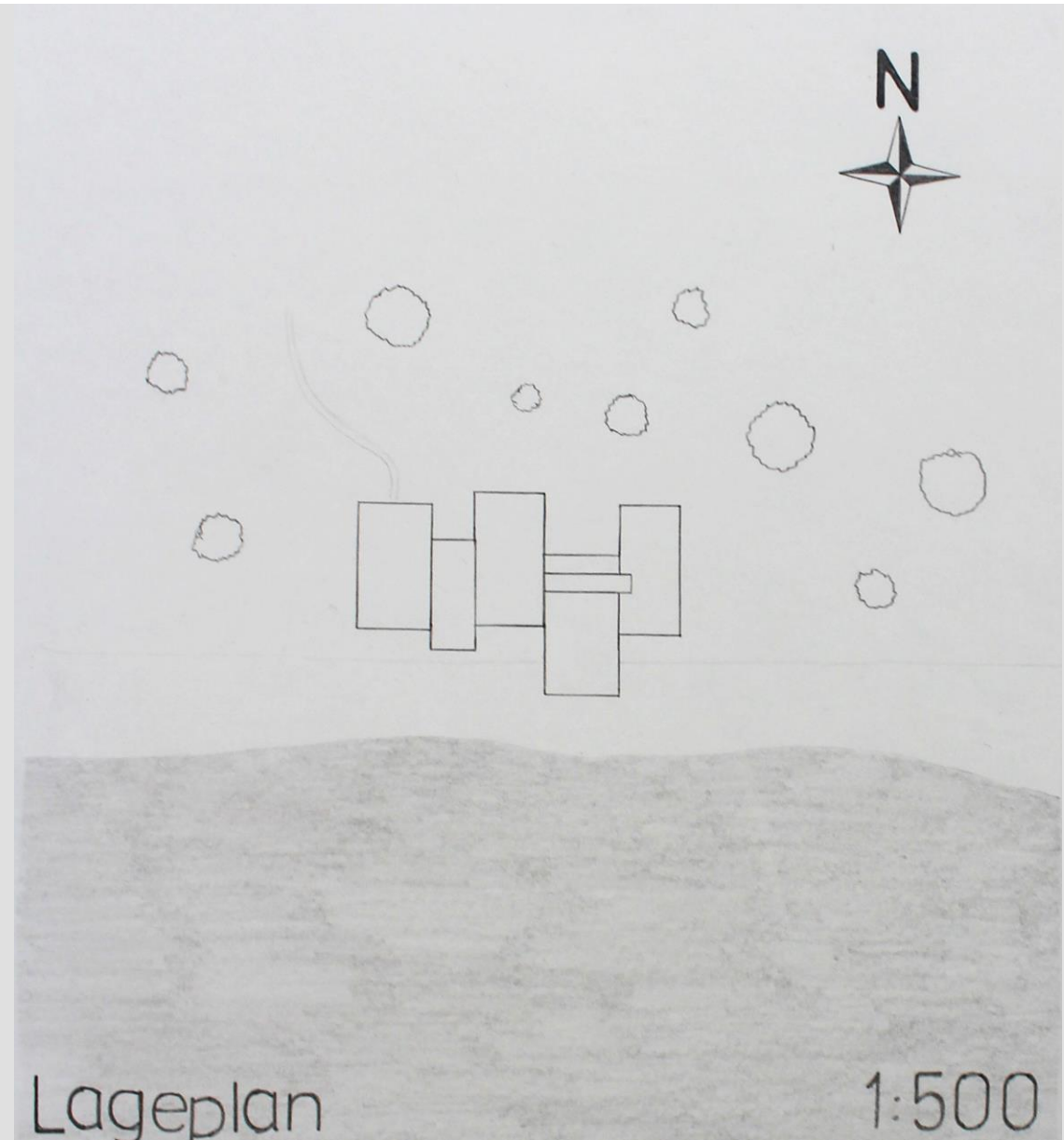
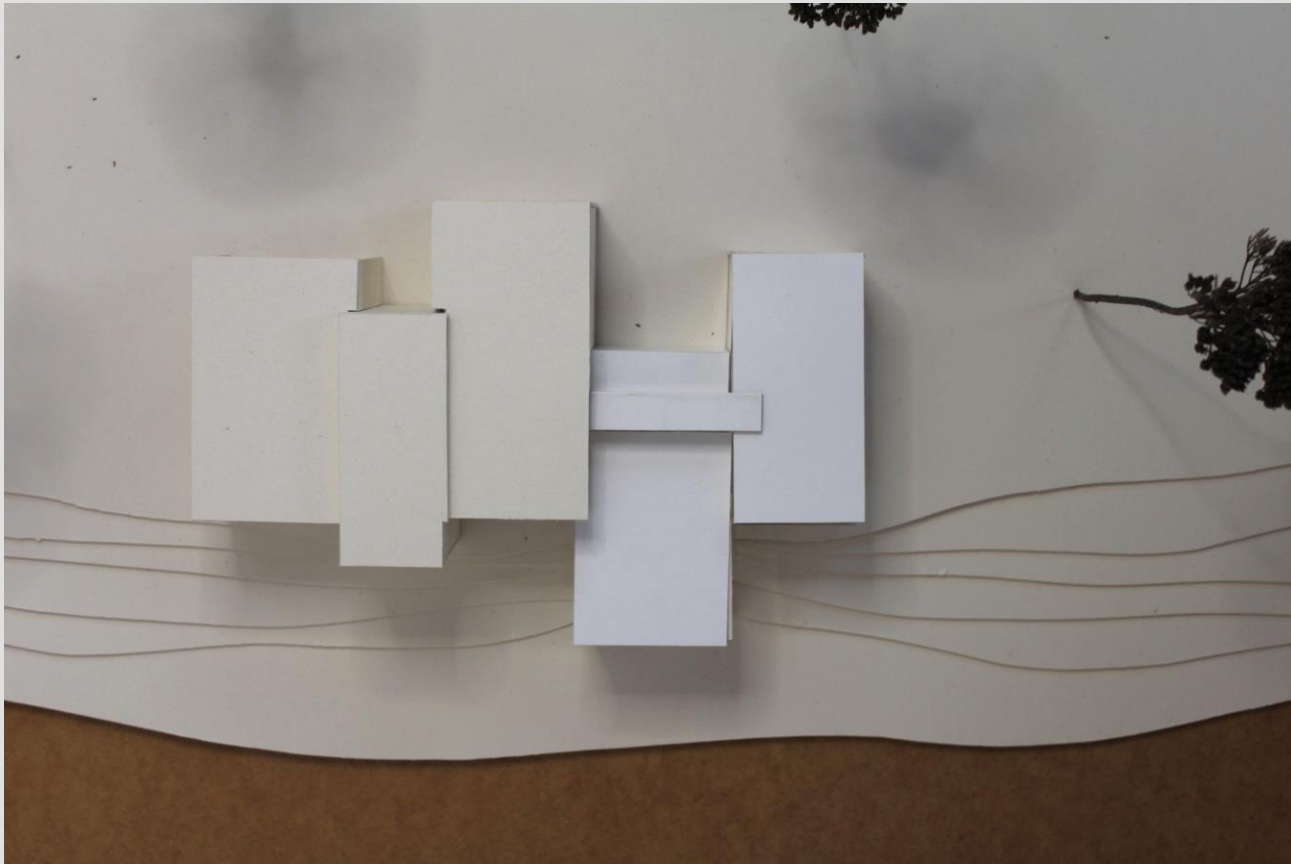


Lageplan 1:500

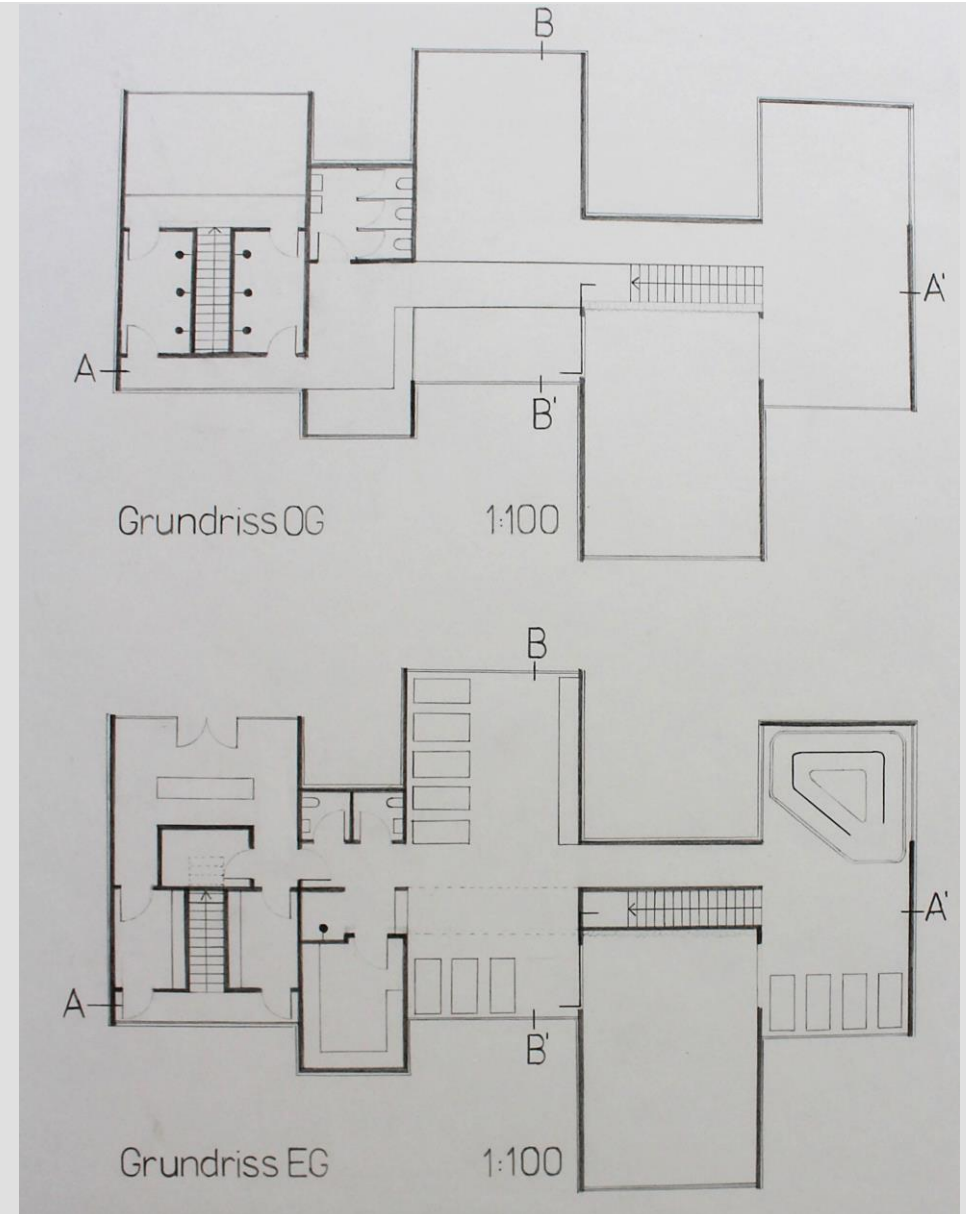
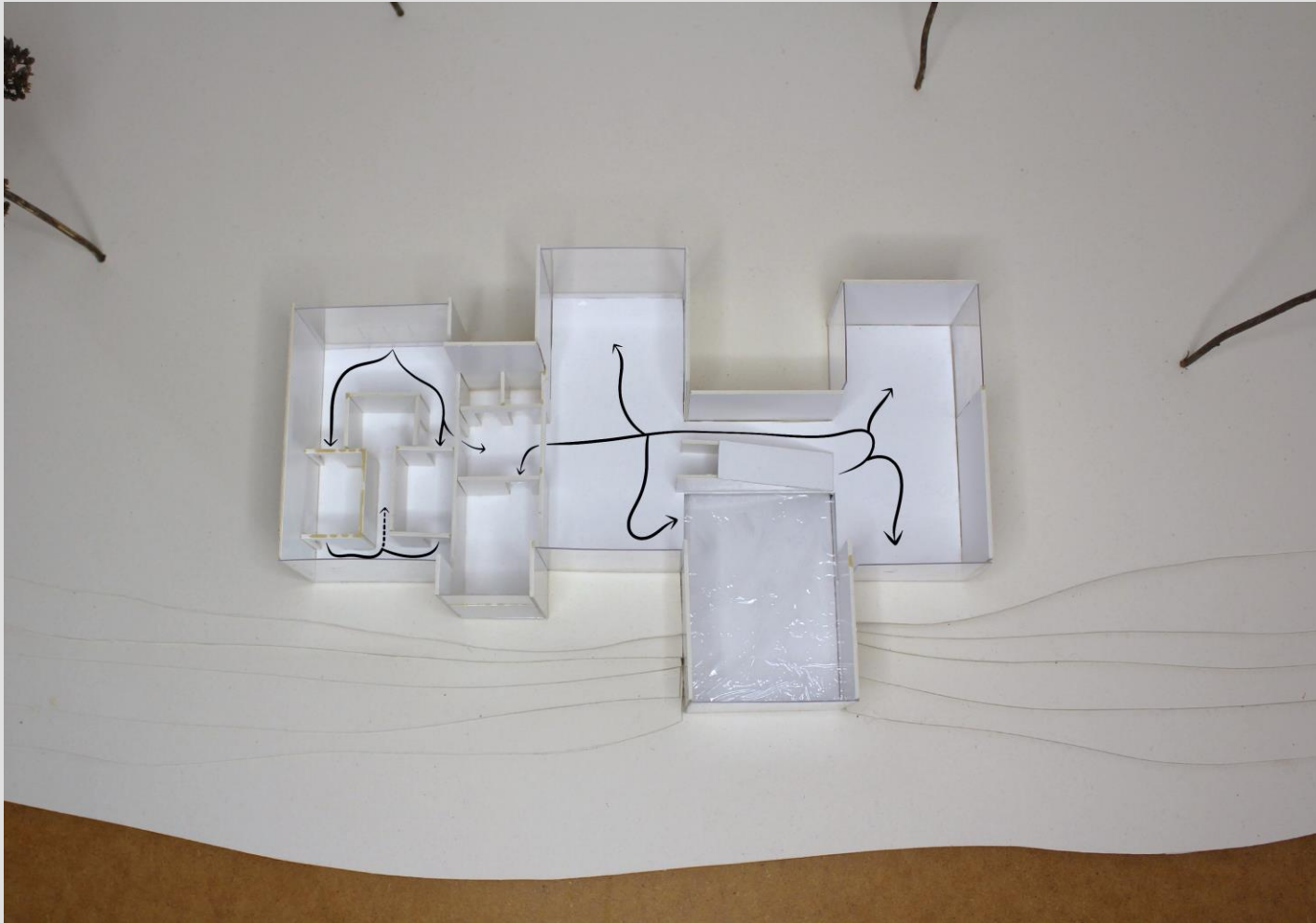
Entwicklung:
Transformation eines
kubischen Körpers



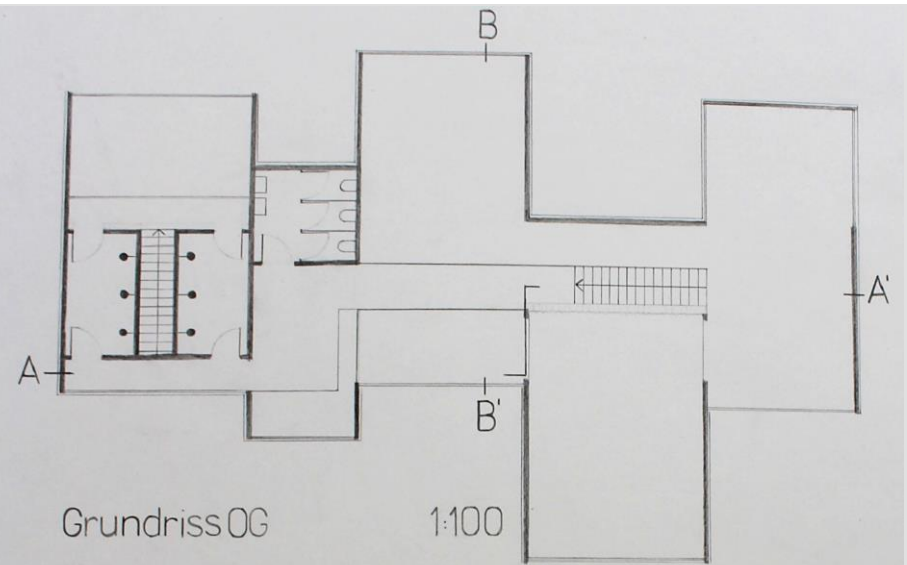
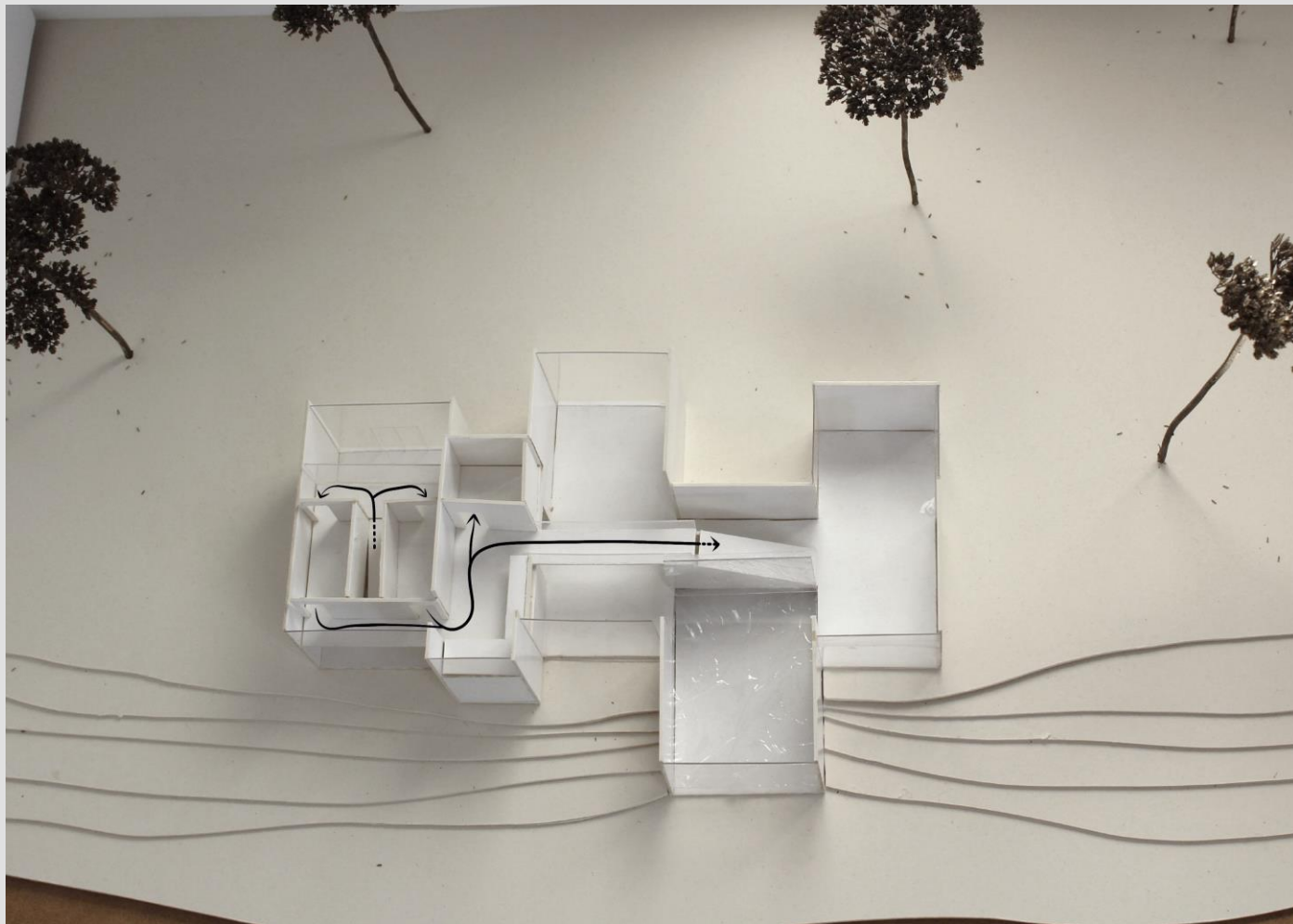
Lage auf dem Grundstück



Erschließung: Erdgeschoss

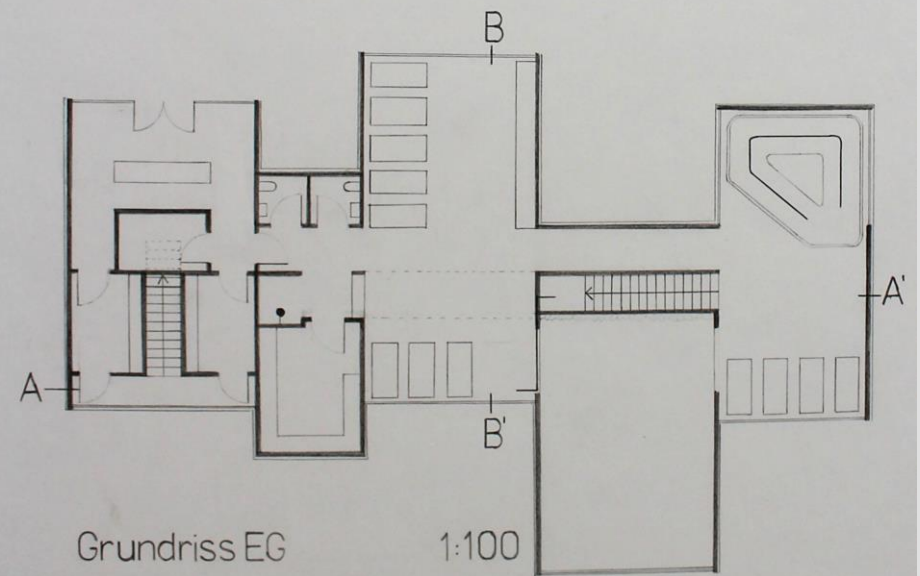


Erschließung: Obergeschoss



Grundriss OG

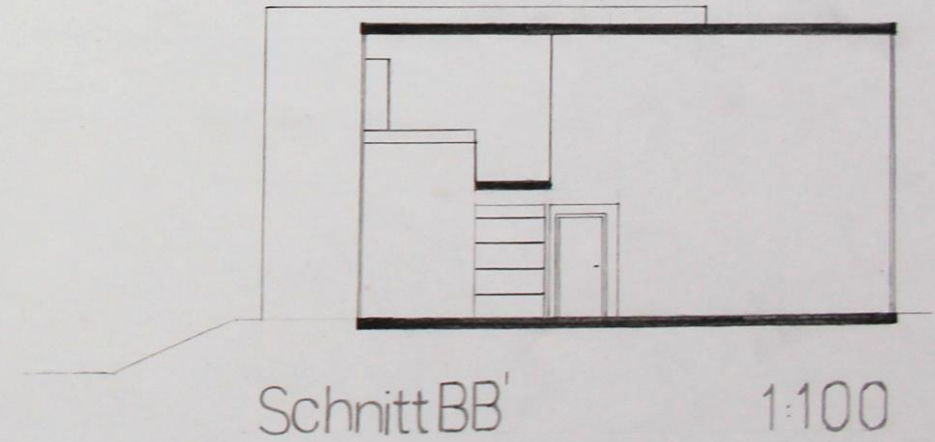
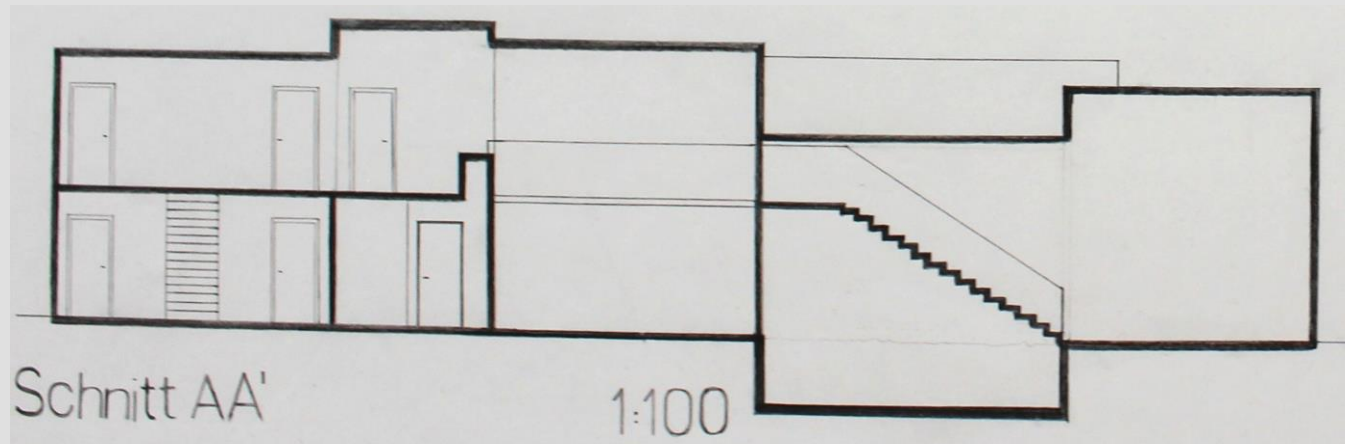
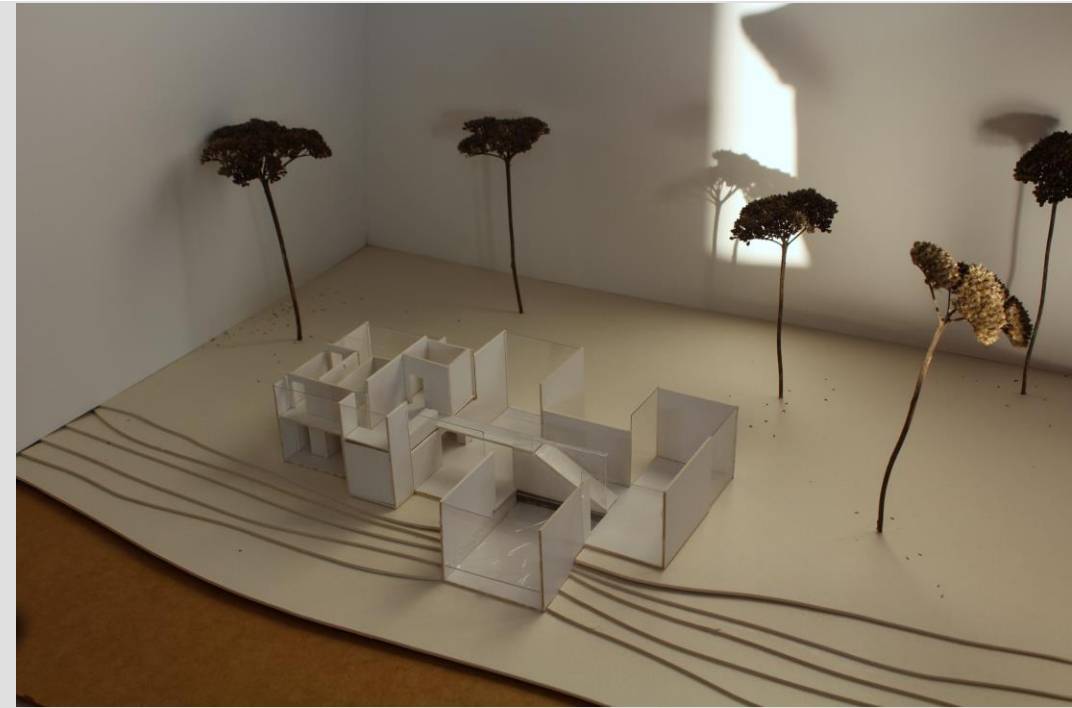
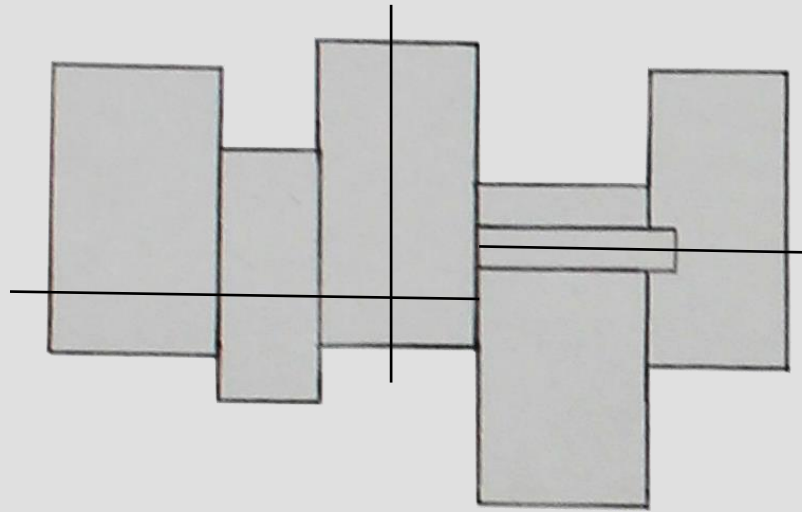
1:100



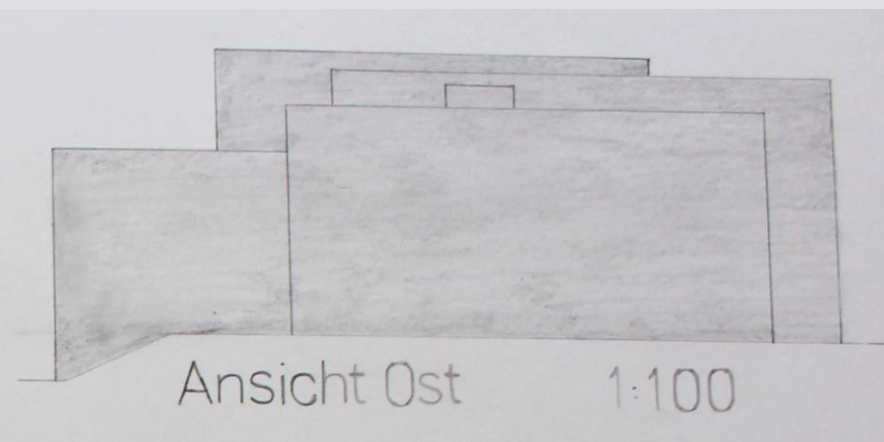
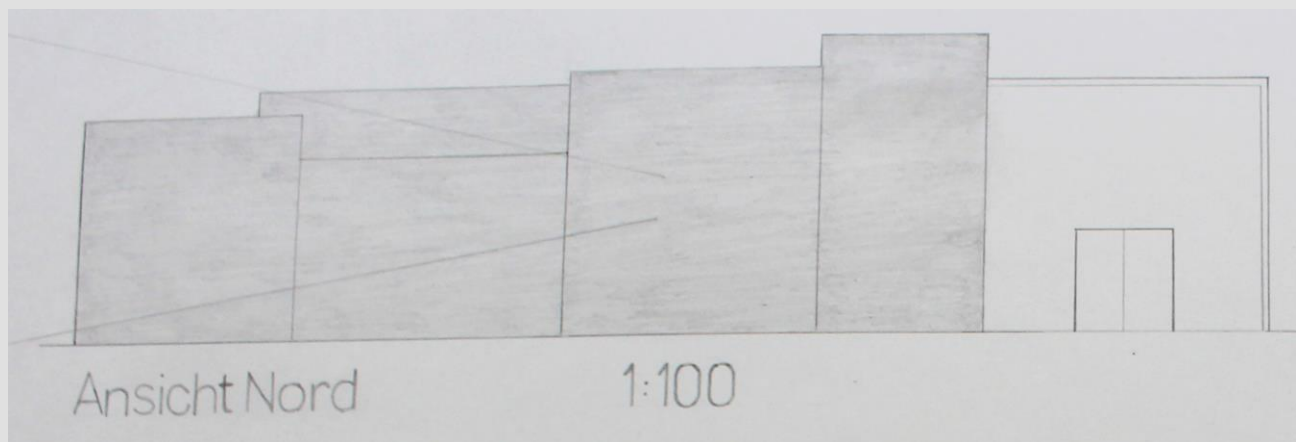
Grundriss EG

1:100

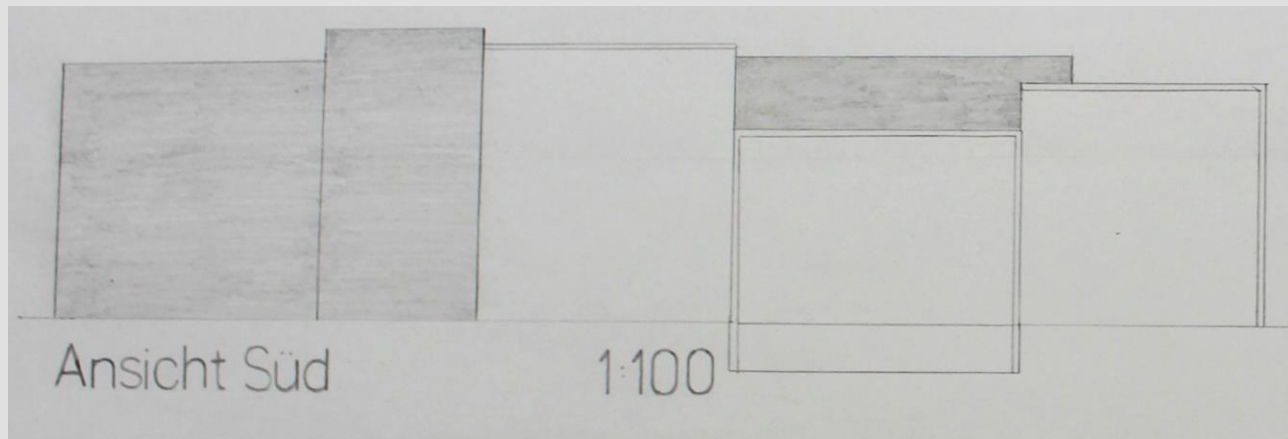
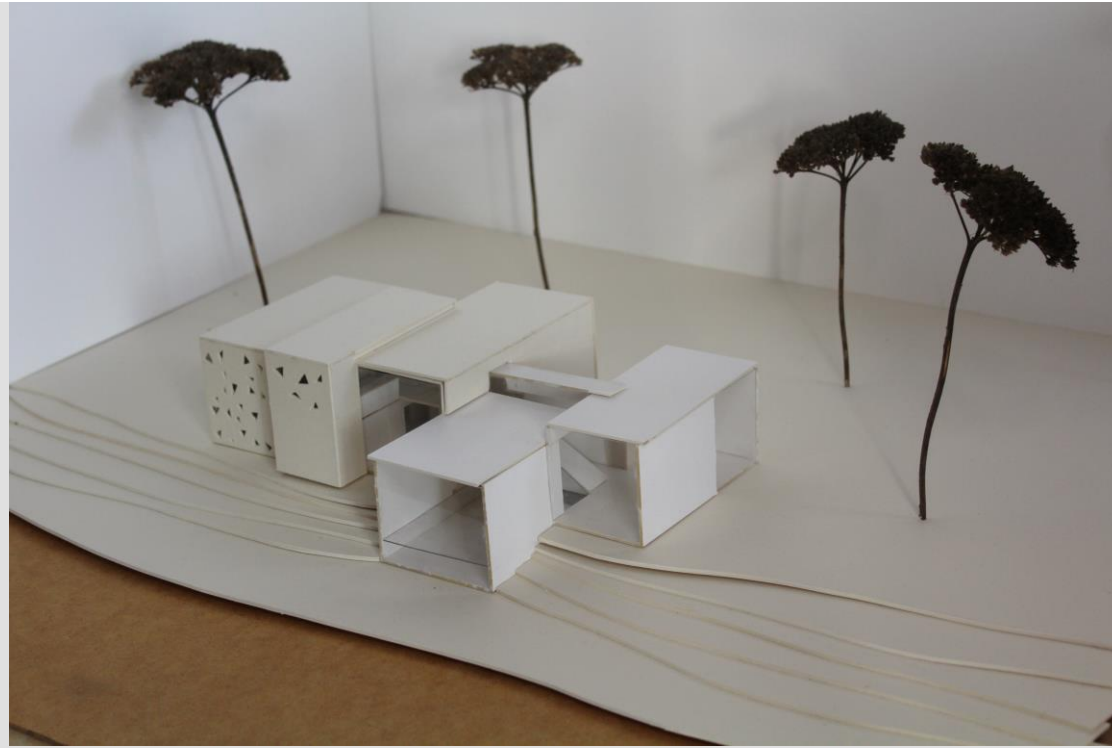
Schnitte



Ansichten



Ansichten



Fassade: GRC-Betonplatten

Justizpalast von Mecanoo in Cordoba



<https://www.detail.de/artikel/moderne-patios-mecanoo-ayesa-entwerfen-justizpalast-in-cordoba-32349/>

